

- Compact metal case with screw terminal block
- Universal input 90-264 VAC
- High efficiency up to 90%
- Active PFC >0.95
- Compliance to EN 61000-3-2
- Short circuit, overvoltage and overload protection
- IEC/EN/UL 62368-1 safety approvals
- Remote On/Off and Remote Sense
- Standard features: Power Good Signal, Load Sharing, 12 V Standby Output
- 3-year product warranty



The TXLN series is a family of encased power supplies designed for a wide range of cost critical applications. With a low profile metal case and screw terminal block connection, they are easy to install in any equipment. These power supplies have universal input and comply with European EMC standards and the Low Voltage Directive (LVD).

Models				
Order Code	Output Power max.	Output Voltage nom. (adjustable)	Output Current max.	Efficiency typ.
TXLN 750-112	750 W	12 VDC (10.8 - 13.2 VDC)	62'500 mA	88 %
TXLN 750-124		24 VDC (21.6 - 26.4 VDC)	31'300 mA	88 %
TXLN 750-148		48 VDC (43.2 - 52.8 VDC)	15'800 mA	90 %

### Input Specifications

Input Voltage	- AC Range	Operational Range: <b>90 - 264 VAC</b> (Full Range) Rated Range: <b>100 - 240 VAC</b> (Full Range)
	- DC Range	Operational Range: <b>127 - 375 VDC</b> (Designed for, no certification) Polarity: <b>irrelevant</b>
Input Frequency		Operational Range: <b>47 - 63 Hz</b> Certified: <b>50/60 Hz</b>
Input Current	- Full load & Vin = 115 VAC	<b>9'800 mA max.</b>
Input Inrush Current	- At 230 VAC	<b>90 A max.</b>
	- At 115 VAC	<b>50 A max.</b>
Power Factor	- At 230 VAC	<b>0.95 min.</b> (Active Power Factor Correction)
	- At 115 VAC	<b>0.95 min.</b> (Active Power Factor Correction)
Input Protection		<b>T 12 A / 250 VAC</b> (Internal Fuse)
Recommended Input Fuse		<b>12'000 mA</b> (slow blow) (The need of an external fuse has to be assessed in the final application.)

### Output Specifications

Output Voltage Adjustment		<b>±10%</b> (By trim potentiometer) Output power must not exceed rated power!
Voltage Set Accuracy		<b>±1% max.</b>
Regulation	- Input Variation (Vmin - Vmax)	<b>0.5% max.</b>
	- Load Variation (0 - 100%)	<b>1% max.</b>
Ripple and Noise (20 MHz Bandwidth)	12 VDC model:	<b>120 mVp-p max.</b> (w/ 0.1 µF    47 µF)
	24 VDC model:	<b>200 mVp-p max.</b> (w/ 0.1 µF    47 µF)
	48 VDC model:	<b>240 mVp-p max.</b> (w/ 0.1 µF    47 µF)
Capacitive Load		<b>108'000 µF max.</b>
Minimum Load		<b>Not required</b>
Temperature Coefficient		<b>±0.03 %/K max.</b>
Hold-up Time	- At 230 VAC	<b>16 ms min.</b>
	- At 115 VAC	<b>16 ms min.</b>
Start-up Time	- At 230 VAC	<b>2'000 ms max.</b>
Short Circuit Protection		<b>Continuous, Automatic recovery</b>
Output Current Limitation		<b>105 - 135% of Iout max.</b>
Overvoltage Protection		<b>115 - 140% of Vout nom.</b>
Load Share Function	- Refer to application note	<a href="http://www.tracopower.com/overview/txln750">www.tracopower.com/overview/txln750</a>
Load Share Accuracy		<b>10%</b>

### Safety Specifications

Standards	- IT / Multimedia Equipment	<b>EN 62368-1</b> <b>IEC 62368-1</b> <b>UL 62368-1</b>
	- Certification Documents	<a href="http://www.tracopower.com/overview/txln750">www.tracopower.com/overview/txln750</a>
Protection Class		<b>Class I (Prepared): Connection to PE</b>
Pollution Degree		<b>PD 2</b>
Over Voltage Category		<b>OVC II</b>

### EMC Specifications

EMI Emissions	- Conducted Emissions	<b>EN 55032 class B</b> (internal filter)
	- Radiated Emissions	<b>EN 55032 class B</b> (internal filter)
	- Harmonic Current Emissions	<b>EN 61000-3-2, class D</b>
	- Voltage Fluctuations & Flicker	<b>EN 61000-3-3</b>

All specifications valid at nominal voltage, resistive full load and +25°C after warm-up time, unless otherwise stated.

<b>EMS Immunity</b>		EN 55024 (IT Equipment) EN 55035 (Multimedia)
- Electrostatic Discharge	Air:	EN 61000-4-2, $\pm 8$ kV, perf. criteria A
	Contact:	EN 61000-4-2, $\pm 4$ kV, perf. criteria A EN 61000-4-3, 10 V/m, perf. criteria A EN 61000-4-4, $\pm 2$ kV, perf. criteria A
- RF Electromagnetic Field	L to L:	EN 61000-4-5, $\pm 2$ kV, perf. criteria B
- EFT (Burst) / Surge	L to PE:	EN 61000-4-5, $\pm 4$ kV, perf. criteria B EN 61000-4-6, 10 Vrms, perf. criteria A
- Conducted RF Disturbances	Continuous:	EN 61000-4-8, 30 A/m, perf. criteria A
- PF Magnetic Field	1 s:	EN 61000-4-8, 300 A/m, perf. criteria A
- Voltage Dips & Interruptions	230 VAC / 50 Hz:	EN 61000-4-11 30%, 25 periods, perf. criteria C >95%, 0.5 periods, perf. criteria B >95%, 250 periods, perf. criteria C

### General Specifications

Relative Humidity		90% max. (non condensing)
Temperature Ranges	- Operating Temperature - Storage Temperature	-20°C to +70°C -40°C to +85°C
Power Derating	- High Temperature - Low Input Voltage	2.5 %/K above 50°C 1 %/V below 100 VAC
		See application note: <a href="http://www.tracopower.com/overview/txln750">www.tracopower.com/overview/txln750</a>
Over Temperature Protection Switch Off	- Protection Mode	90°C min. / 95°C typ. / 100°C max. (Automatic recovery)
Cooling System		Forced air cooling (with internal fan)
Fan Power Source	- Characteristic - Output Voltage - Output Current	Constant fan speed (continuous) 12 VDC 480 mA max. (6'800 RPM / 38 CFM)
Standby Power Source	- Output Voltage - Output Current	12 VDC 300 mA max.
Remote Control	- Voltage Controlled Remote	See application note: <a href="http://www.tracopower.com/overview/txln750">www.tracopower.com/overview/txln750</a>
Altitude During Operation		4'000 m max.
Regulator Topology		Flyback Converter
Switching Frequency		55 - 65 kHz (PWM)
Insulation System		Reinforced Insulation
Working Voltage (rated)		291 VAC
Isolation Test Voltage	- Input to Output, 60 s - Input to Case or PE, 60 s - Output to Case or PE, 60 s	3'000 VAC 1'500 VAC 500 VAC
Isolation Resistance	- Input to Output, 500 VDC	100 M $\Omega$ min.
Isolation Capacitance	- Input to Output, 100 kHz, 1 V	20'000 pF max.
Leakage Current (at 264 VAC / 60Hz)	- Earth Leakage Current	1500 $\mu$ A max.
Distance Through Isolation		6 mm
Reliability	- Calculated MTBF	107'000 h (MIL-HDBK-217F, ground benign)
Housing Material		Aluminum
Housing Type		Metal Case
Mounting Type		Chassis Mount
Connection Type		Screw Terminal
Weight		2.5 kg
Power OK Signal	- Power OK - Power Off	Voltage source output High level Low level (Refers to 'PG' and 'GND' Pin)

All specifications valid at nominal voltage, resistive full load and +25°C after warm-up time, unless otherwise stated.

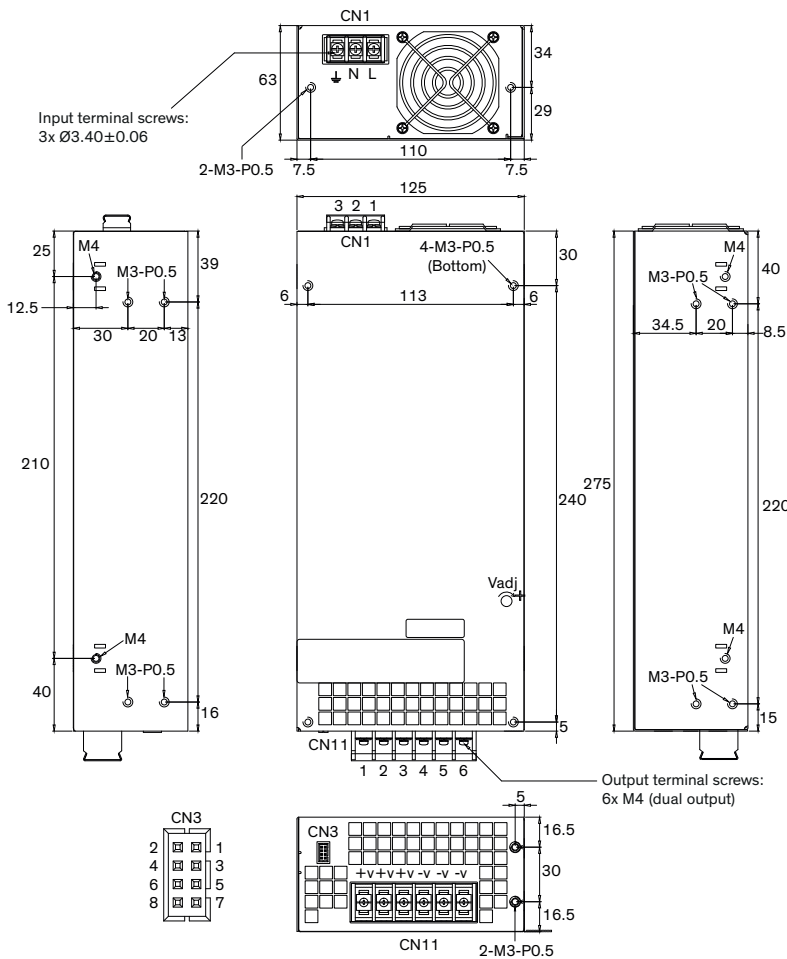
Status Indicator	Indicated by green LED
Sense Function	(to be done)
Environmental Compliance	- REACH Declaration <a href="http://www.tracopower.com/info/reach-declaration.pdf">www.tracopower.com/info/reach-declaration.pdf</a> REACH SVHC list compliant REACH Annex XVII compliant <a href="http://www.tracopower.com/info/rohs-declaration.pdf">www.tracopower.com/info/rohs-declaration.pdf</a> Exemptions: 7a, 7c-I (RoHS exemptions refer to the component concentration only, not to the overall concentration in the product (O5A rule)) 552395cf-3028-43ab-b613-08eae8df079
	- RoHS Declaration
	- SCIP Reference Number

### Supporting Documents

Overview Link (for additional Documents)

[www.tracopower.com/overview/txln750](http://www.tracopower.com/overview/txln750)

### Outline Dimensions



Dimensions in mm  
Tolerances:  
0-8: ±0.2  
8-25: ±0.3  
25-80: ±0.5  
80-250: ±0.8

Mounting screws  
Max. screw penetration depth: 3.0  
Max. screw locked torque M3: 0.8 Nm  
Max. screw locked torque M4: 1.6 Nm

Included in shipment:  
- 6x M3 mounting screw

Input	
CN1	
Pin	Function
1	AC (L)
2	AC (N)
3	PE

Output	
CN11	
Pin	Function
1-3	+ Vout
4-6	- Vout

Signal	
CN3	
Pin	Function
1	LS
2	PG
3	+Sense
4	-Sense
5	-Remote
6	+Remote
7	Standby
8	GND

**CN1:**  
3 pin, 10mm pitch  
with PC cover  
Max. terminal screw locked torque: 0.7 Nm

**CN11:**  
6 pin, 11 mm pitch  
Max. terminal screw locked torque: 0.7 Nm

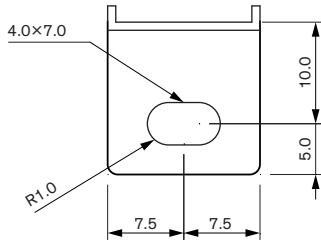
**CN3 Housing Type:**  
HRS DF11-8DP-2DSA

**CN3 Mating Housing:**  
HRS DF11-8DS-2C

**CN3 Crimp Contact:**  
HRS DF11-EP22SCB

All specifications valid at nominal voltage, resistive full load and +25°C after warm-up time, unless otherwise stated.

### Mounting Bracket (included)



Dimensions in mm

- Included in shipment:
- 4x Mounting Bracket
  - 4x M4 mounting screw

