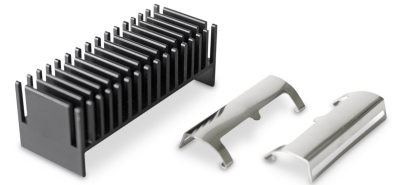


## Heat Sink

## THR-HS2

|                          |  |
|--------------------------|--|
| <b>Order Code</b>        | <b>THR-HS2 (on demand)</b><br>(backorder with MOQ, non stocking item)                        |
| <b>Compatible with</b>   | THR 10WI, THR 20WI, THR 40WI   |
| <b>Thermal Impedance</b> | Please refer to converter datasheets   |
| <b>Package Content</b>   | Heatsink, thermal pad and 2 clamps   |
| <b>Material</b>          | Aluminum   |
| <b>Surface Finish</b>    | Anodized (black)   |
| <b>Weight</b>            | 32 g (without converter)   |
| <b>RoHS Exemptions</b>   | No Exemptions  |
| <b>Overview Link</b>     | <a href="http://www.tracopower.com/overview/thr-hs2">www.tracopower.com/overview/thr-hs2</a> |



### Outline Dimensions

