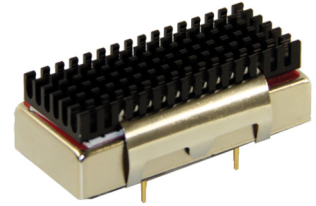


## Heat Sink

## TEN-HS6

<b>Order Code</b>	<b>TEN-HS6</b>
<b>Compatible with</b>	TEN 40N, TEN 40WIN, TEN 50, TEN 50WI
<b>Thermal Impedance</b>	Please refer to converter datasheets
<b>Package Content</b>	Heatsink, thermal pad and 2 clamps
<b>Material</b>	Aluminum
<b>Surface Finish</b>	Anodized (black)
<b>Weight</b>	9 g (without converter)
<b>RoHS Exemptions</b>	No Exemptions
<b>Overview Link</b>	<a href="http://www.tracopower.com/overview/ten-hs6">www.tracopower.com/overview/ten-hs6</a>



- For TEN 40N and TEN 40WIN this Heat Sink is only compatible with the 24 VDC output models, for the other output models please refer to TEN-HS4: [www.tracopower.com/overview/ten-hs4](http://www.tracopower.com/overview/ten-hs4)

### Outline Dimensions

