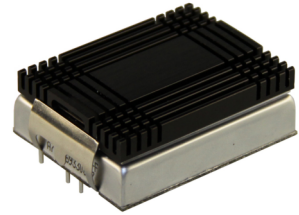


## Heat Sink

## TEN-HS2

<b>Order Code</b>	<b>TEN-HS2</b>
<b>Compatible with</b>	TEN 20WI, TEN 30WI
<b>Thermal Impedance</b>	Please refer to converter datasheets
<b>Package Content</b>	Heatsink, thermal pad and 2 clamps
<b>Material</b>	Aluminum
<b>Surface Finish</b>	Anodized (black)
<b>Weight</b>	15 g (without converter)
<b>RoHS Exemptions</b>	No Exemptions
<b>Overview Link</b>	<a href="http://www.tracopower.com/overview/ten-hs2">www.tracopower.com/overview/ten-hs2</a>



### Outline Dimensions

