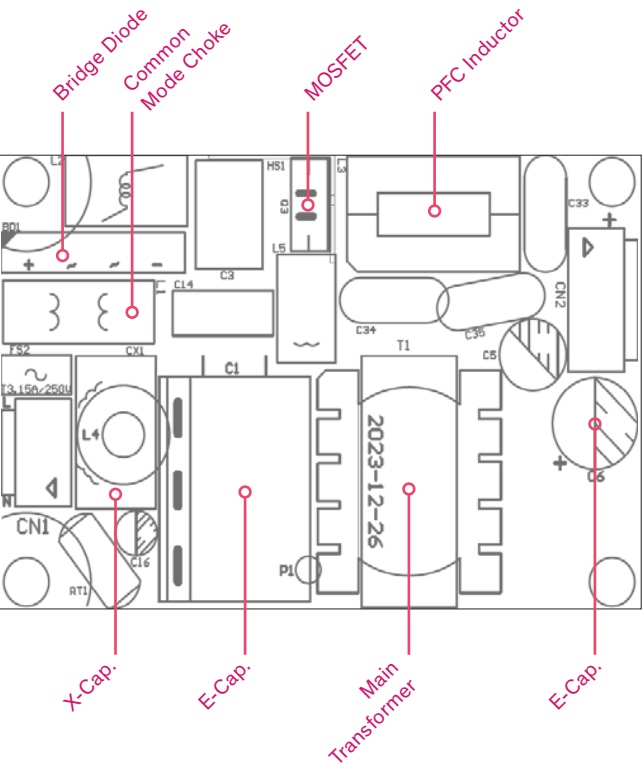


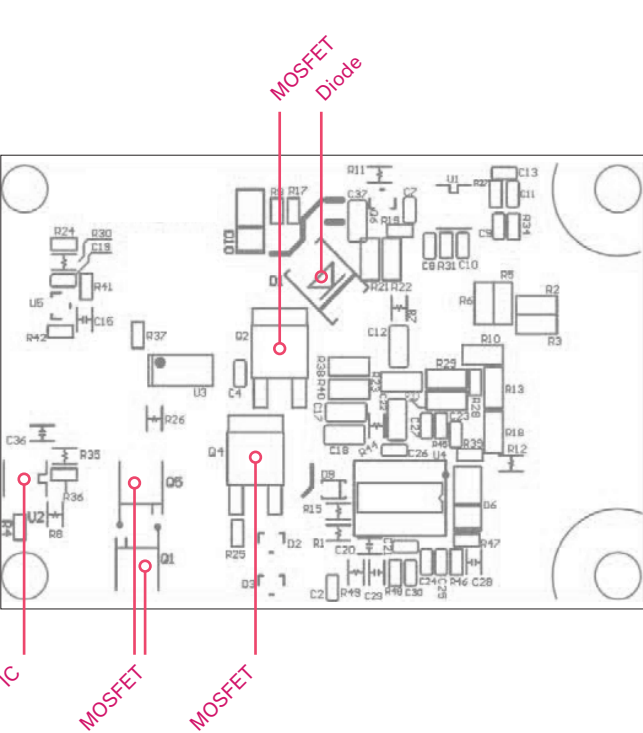
Thermal Consideration

Max. temperature of key components

Top View



Bottom View

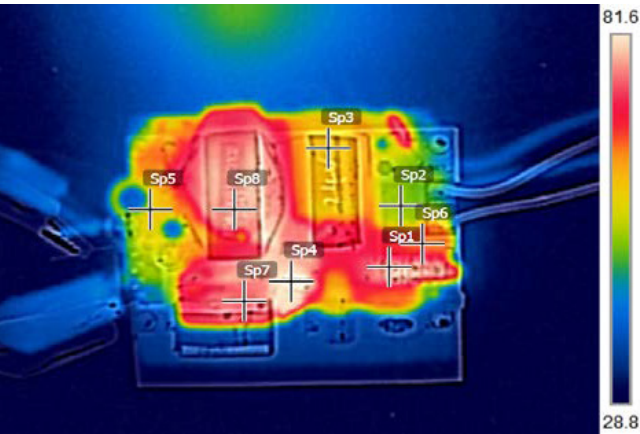


| Component | Bridge Diode | Common Mode Choke | PFC inductor | MOSFET | E-Cap. | X-Cap. | Diode | Main Transformer | IC |
|------------------|--------------|-------------------|--------------|----------------|--------|--------|-------|------------------|-----|
| | BD1 | L1 | L3 | Q1, Q3, Q4, Q5 | C1, C6 | CX1 | D1 | T1 | U2 |
| Temp. limit [°C] | 150 | 130 | 130 | 150 | 105 | 110 | 150 | 110 | 150 |

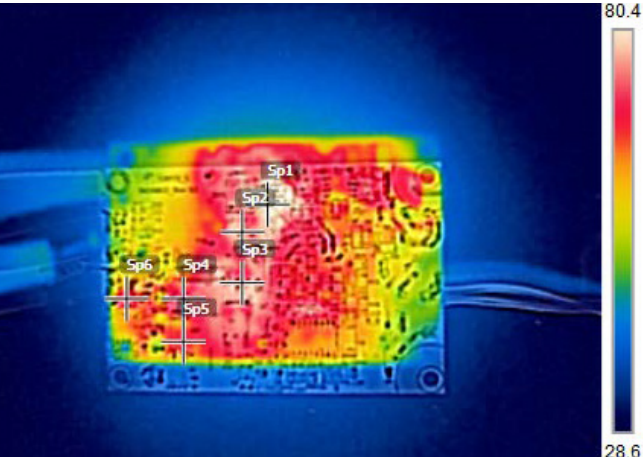
Note: - TXO 120-124-J is chosen as a representative model in this document.

Thermal cam images

115 Vin; 100 W Load; Natural Convection; Top View

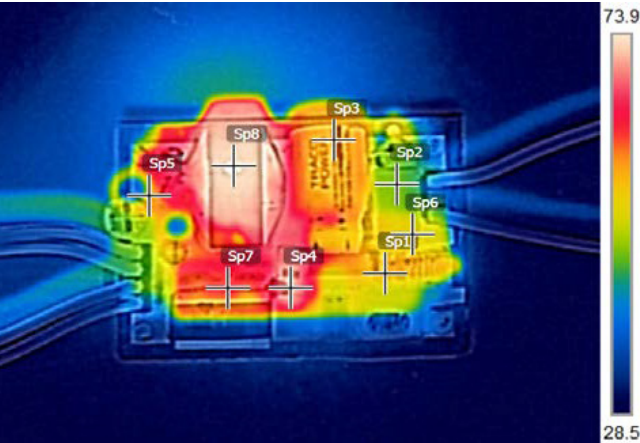


115 Vin; 100 W Load; Natural Convection; Bottom View

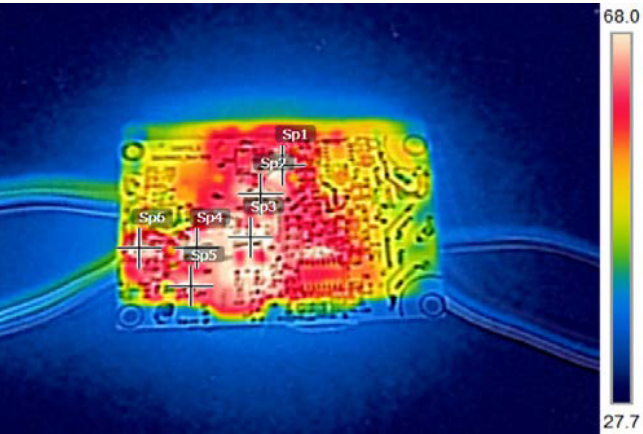


| Measuring point | Top View | | | | | | | | Bottom View | | | | | |
|-----------------|----------|------|------|------|------|------|------|------|-------------|------|------|------|------|------|
| | Sp1 | Sp2 | Sp3 | Sp4 | Sp5 | Sp6 | Sp7 | Sp8 | Sp1 | Sp2 | Sp3 | Sp4 | Sp5 | Sp6 |
| Component | BD1 | CX1 | C1 | Q3 | C6 | L1 | L3 | T1 | D1 | Q2 | Q4 | Q5 | Q1 | U2 |
| Temp. [°C] | 77.0 | 49.7 | 60.3 | 81.8 | 55.8 | 65.8 | 75.3 | 76.6 | 82.6 | 74.4 | 74.2 | 70.8 | 66.4 | 71.0 |

230 Vin; 100 W Load; Natural Convection; Top View



230 Vin; 100 W Load; Natural Convection; Bottom View



| Measuring point | Top View | | | | | | | | Bottom View | | | | | |
|-----------------|----------|------|------|------|------|------|------|------|-------------|------|------|------|------|------|
| | Sp1 | Sp2 | Sp3 | Sp4 | Sp5 | Sp6 | Sp7 | Sp8 | Sp1 | Sp2 | Sp3 | Sp4 | Sp5 | Sp6 |
| Component | BD1 | CX1 | C1 | Q3 | C6 | C5 | L3 | T1 | D1 | Q2 | Q4 | Q5 | Q1 | U2 |
| Temp. [°C] | 54.5 | 42.7 | 55.4 | 70.4 | 51.4 | 50.1 | 60.4 | 73.3 | 68.7 | 66.0 | 67.8 | 67.3 | 64.3 | 70.9 |