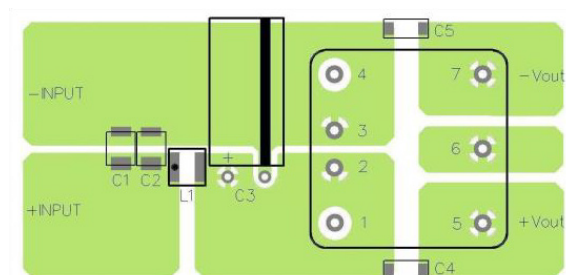
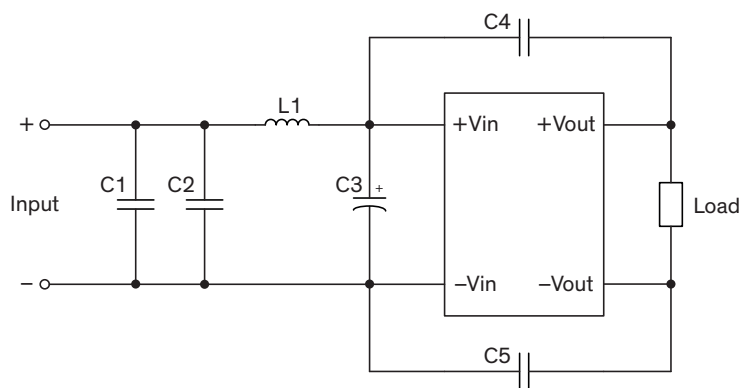


EMI Consideration

Suggested filter to comply with EN 55032 Conducted and Radiated Emissions Class A limits

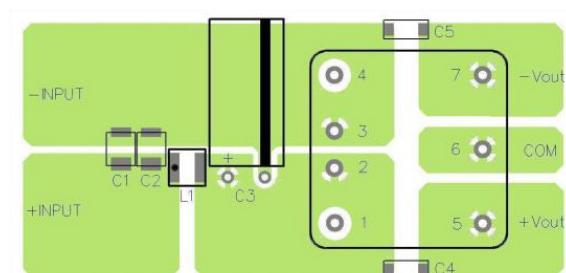
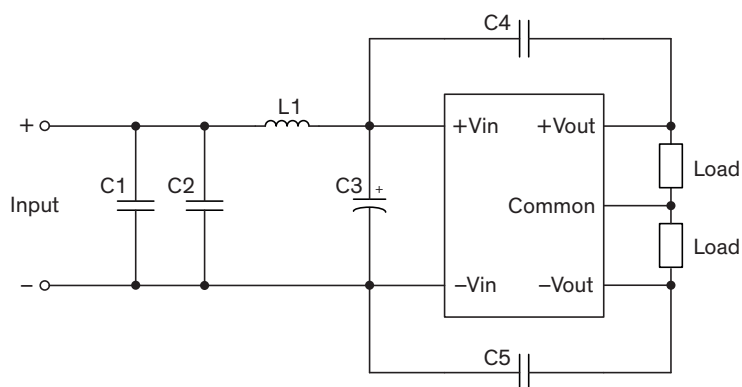
Single output models

PCB layout suggestion



Dual output models

PCB layout suggestion



Suggested components to comply with EN 55032 Conducted and Radiated Emissions Class A limits

Model	C1, C2	C3	C4, C5	L1
THN 15-36xxUIR THN 20-36xxUIR	4.7 μ F / 100 V 1210 MLCC	100 μ F / 100 V / KZN Al. Cap. (lie down)	1'000 pF / 3 kV 1808 MLCC	TCK-196
THN 15-72xxUIR THN 20-72xxUIR	1 μ F / 250 V 1812 MLCC	47 μ F / 200 V / KXJ Al. Cap. (lie down)		TCK-197

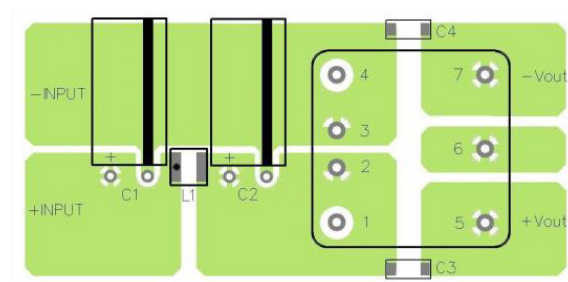
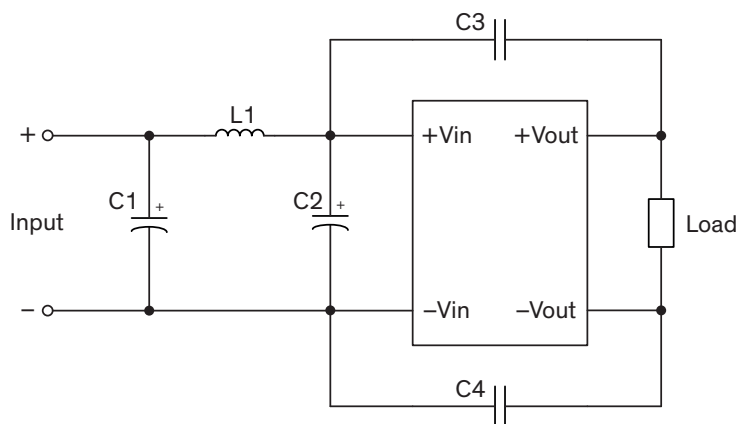
TCK-196 datasheet: www.tracopower.com/overview/tck-196

TCK-197 datasheet: www.tracopower.com/overview/tck-197

Suggested filter to comply with EN 55032 Conducted and Radiated Emissions Class B limits

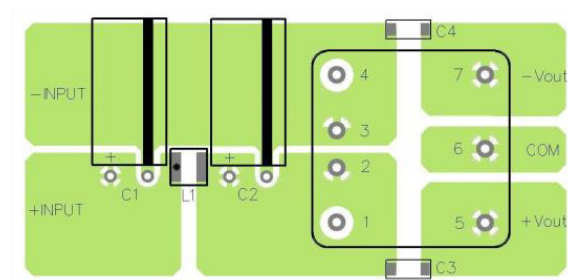
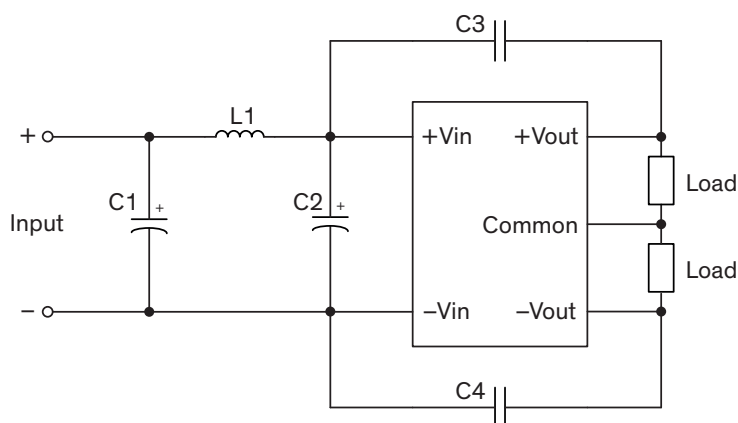
Single output models

PCB layout suggestion



Dual output models

PCB layout suggestion



Suggested components to comply with EN 55032 Conducted and Radiated Emissions Class B limits

Model	C1	C2	C3, C4	L1
THN 15-36xxUIR THN 20-36xxUIR	100 μ F / 100 V / KZN Al. Cap. (lie down)	100 μ F / 100 V / KZN Al. Cap. (lie down)	1'000 pF / 3 kV 1808 MLCC	TCK-196
THN 15-72xxUIR THN 20-72xxUIR	47 μ F / 200 V / KXJ Al. Cap. (lie down)	68 μ F / 200 V / KXJ Al. Cap. (lie down)		TCK-197

TCK-196 datasheet: www.tracopower.com/overview/tck-196

TCK-197 datasheet: www.tracopower.com/overview/tck-197