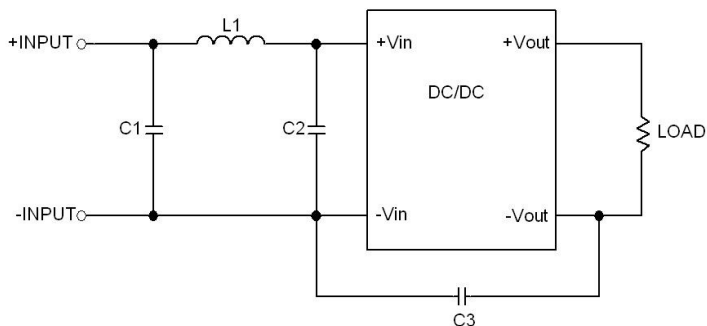


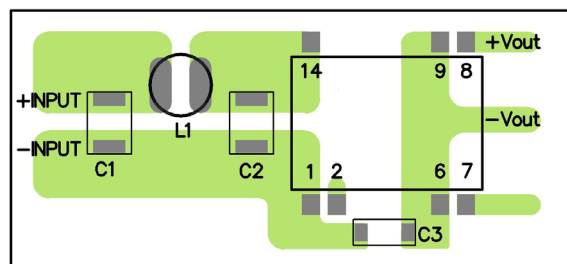
### EMI Consideration

Suggested filter to comply with EN 55032 Class A resp. B limits

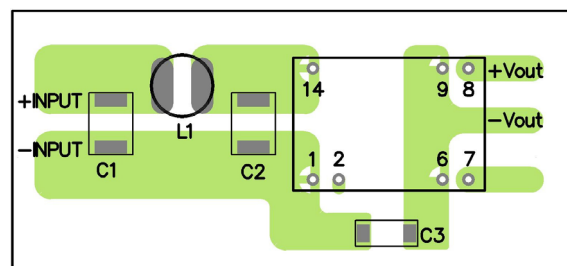
#### Single output models



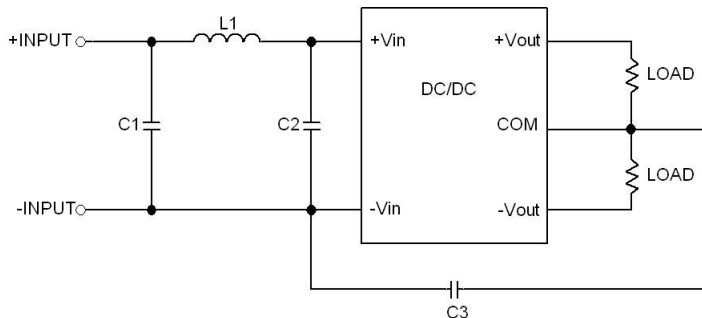
#### SMD models



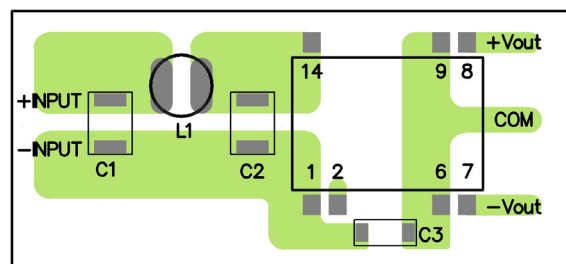
#### DIP models



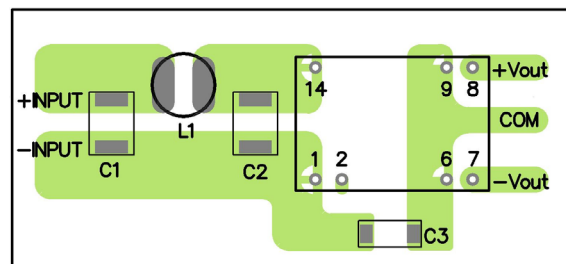
#### Dual output models



#### SMD models



#### DIP models



## Suggested components

Suggested components to comply with EN 55032 Class A limits				
Model	C1	C2	C3	L1
TDR 3-12xxWI(SM)	10 $\mu$ F / 25 V 1812 MLCC	N/A	220 pF / 3 kV 1808 MLCC	10 $\mu$ H / 1.44 A / 0.1 $\Omega$ 0504 SMD / TCK-047
TDR 3-24xxWI(SM)	4.7 $\mu$ F / 50 V 1812 MLCC	N/A	220 pF / 3 kV 1808 MLCC	12 $\mu$ H / 1.4 A / 0.12 $\Omega$ 0504 SMD / TCK-062
TDR 3-48xxWI(SM)	4.7 $\mu$ F / 100 V 1812 MLCC	N/A	330 pF / 3 kV 1808 MLCC	18 $\mu$ H / 1.2 A / 0.15 $\Omega$ 0504 SMD / TCK-046

Suggested components to comply with EN 55032 Class B limits				
Model	C1	C2	C3	L1
TDR 3-12xxWI(SM)	10 $\mu$ F / 25 V 1812 MLCC	10 $\mu$ F / 25 V 1812 MLCC	220 pF / 3 kV 1808 MLCC	10 $\mu$ H / 1.44 A / 0.1 $\Omega$ 0504 SMD / TCK-047
TDR 3-24xxWI(SM)	4.7 $\mu$ F / 50 V 1812 MLCC	4.7 $\mu$ F / 50 V 1812 MLCC	220 pF / 3 kV 1808 MLCC	12 $\mu$ H / 1.4 A / 0.12 $\Omega$ 0504 SMD / TCK-062
TDR 3-48xxWI(SM)	4.7 $\mu$ F / 100 V 1812 MLCC	4.7 $\mu$ F / 100 V 1812 MLCC	330 pF / 3 kV 1808 MLCC	18 $\mu$ H / 1.2 A / 0.15 $\Omega$ 0504 SMD / TCK-046

## TCK datasheets

TCK-047: [www.tracopower.com/overview/tck-047](http://www.tracopower.com/overview/tck-047)

TCK-062: [www.tracopower.com/overview/tck-062](http://www.tracopower.com/overview/tck-062)

TCK-046: [www.tracopower.com/overview/tck-046](http://www.tracopower.com/overview/tck-046)