

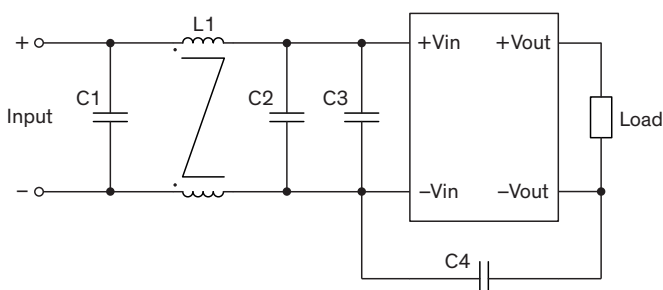
### EMI Consideration

#### Suggested filter to comply with EN 55032 Conducted and Radiated Emissions Class A limits

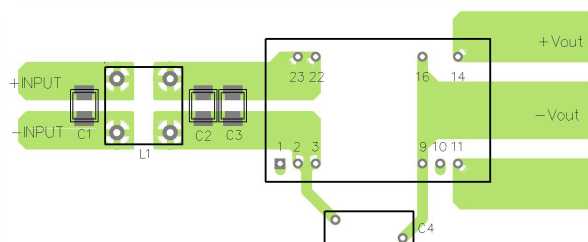
TEN 10WIRH series meet EN 55032 Conducted and Radiated Emissions Class A limits without external components.

#### Suggested filter to comply with EN 55032 Conducted and Radiated Emissions Class B limits

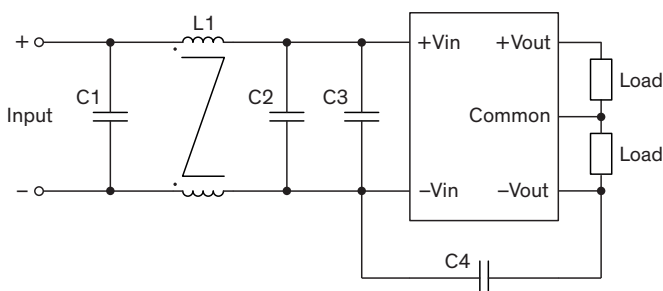
##### Single output models



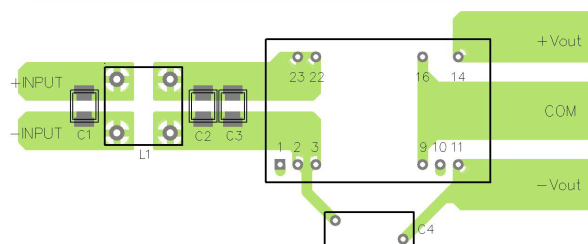
##### Layout suggestion Top View



##### Dual output models



##### Layout suggestion Top View



#### Suggested components to comply with EN 55032 Conducted and Radiated Emissions Class B limits

Model	C1	C2, C3	C4	L1
TEN 10-xxxxxWIRH	1 $\mu$ F / 250 V 1812 MLCC	680 nF / 250 V 1210 MLCC	680 pF Y1 capacitor	325 $\mu$ H TCK-050

TCK-050 datasheet: [www.tracopower.com/overview/tck-050](http://www.tracopower.com/overview/tck-050)