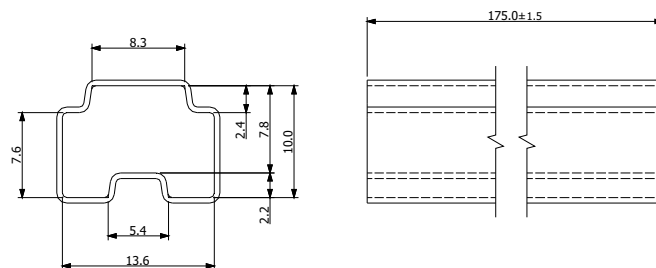
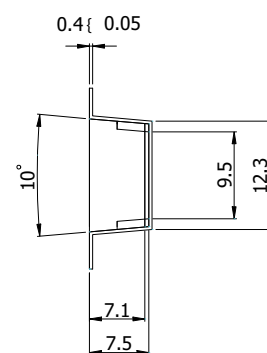
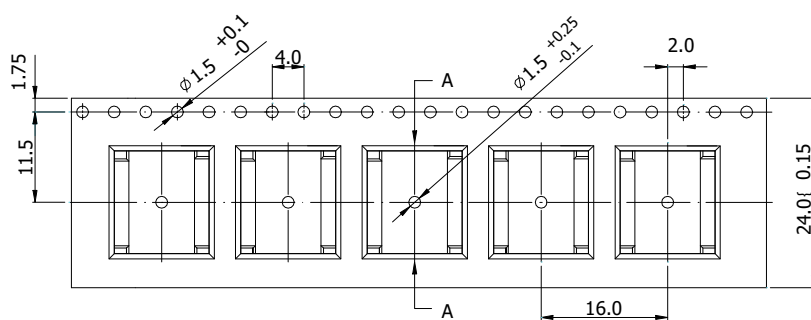
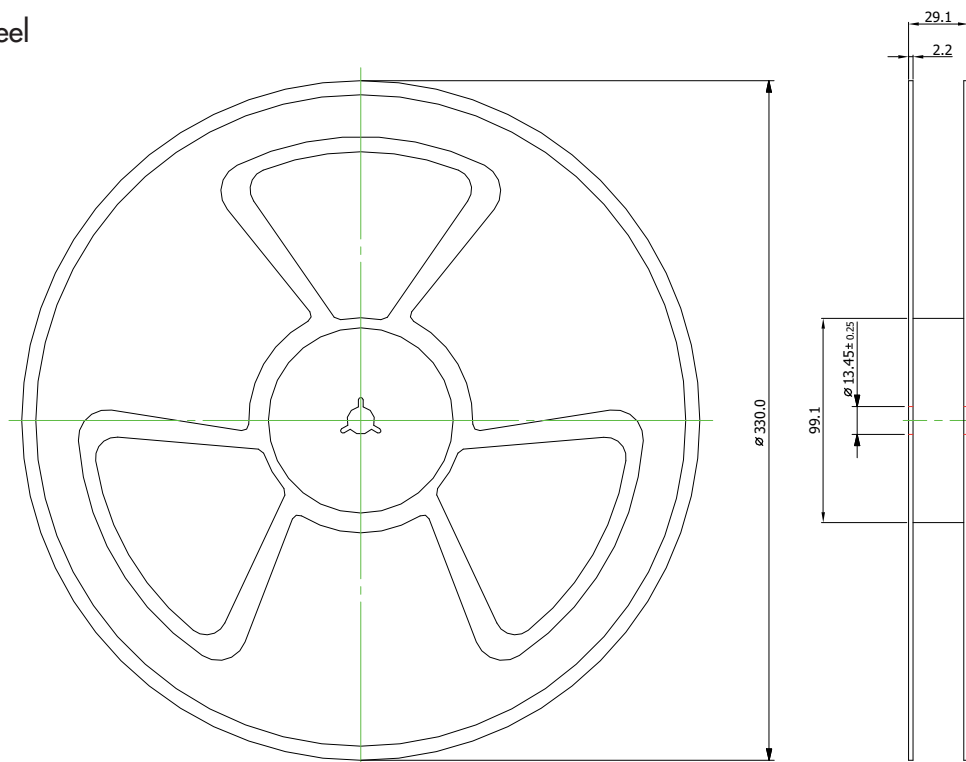


Tube, Tape & Reel dimension - Single Output Models - 5 & 12Vin
Standard Packaging - Tube

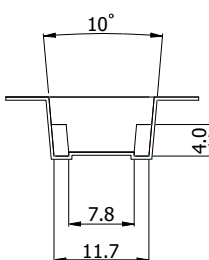
- 1 Tube contains 10 converters


Optional Packaging - Tape & Reel

- Specifications according IEC 286-3
- 1 Reel contains 500 converters
- Use appendix «-TR» on order code

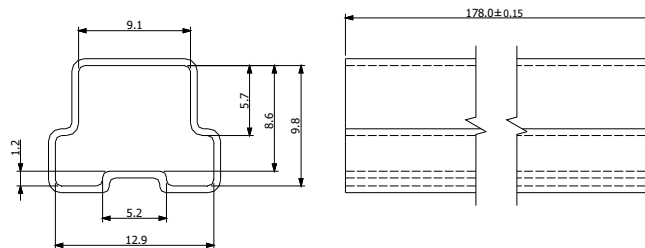


SECTION A-A

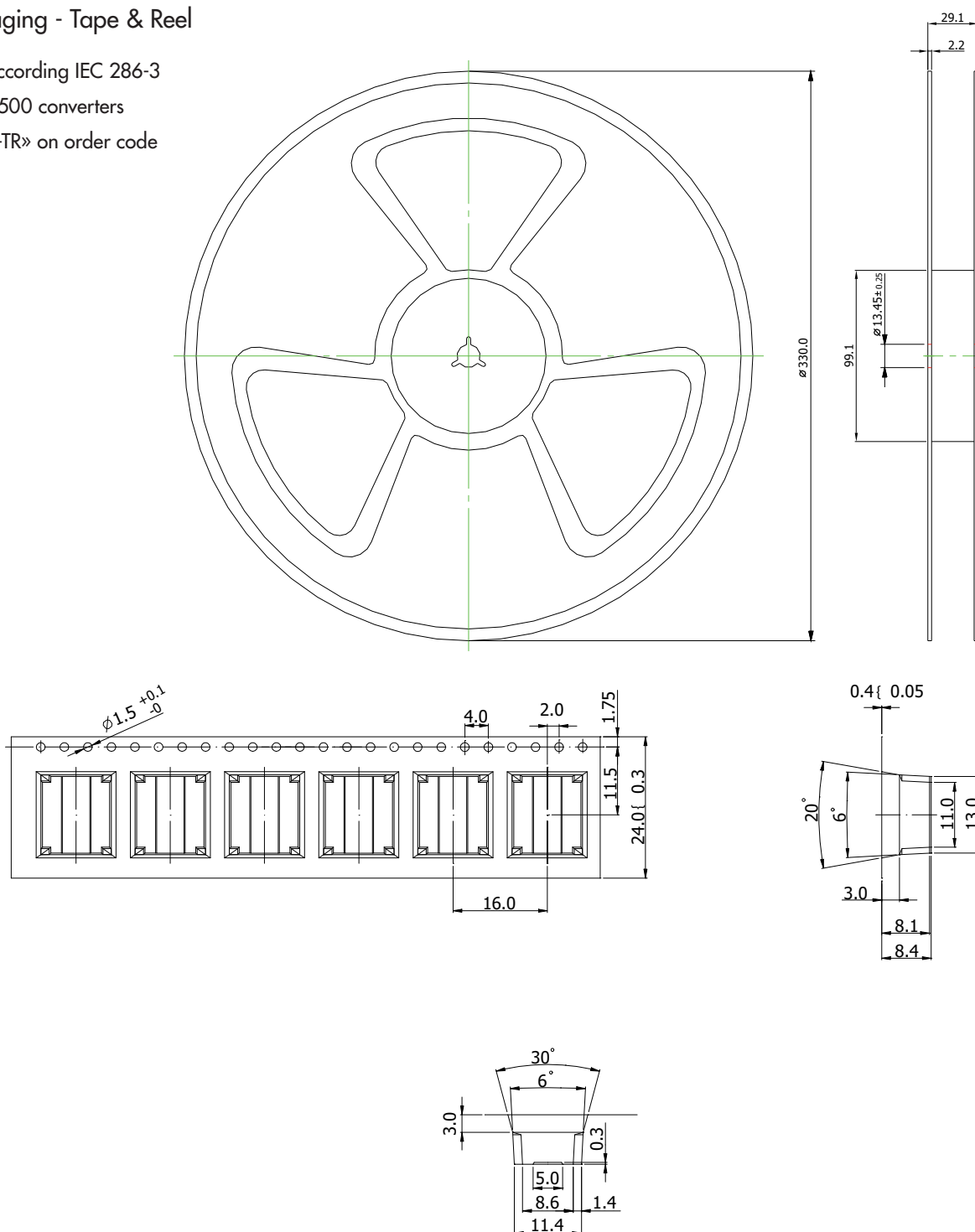


Tube, Tape & Reel dimension - Single Output Models - 24Vin
Standard Packaging - Tube

- 1 Tube contains 10 converters

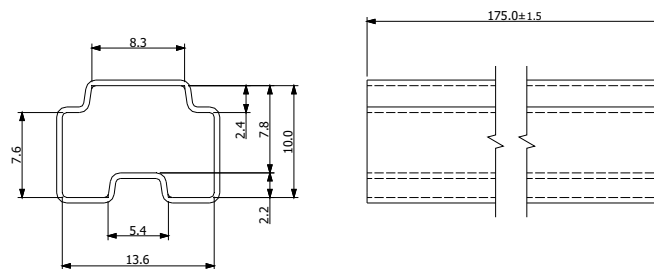

Optional Packaging - Tape & Reel

- Specifications according IEC 286-3
- 1 Reel contains 500 converters
- Use appendix «-TR» on order code

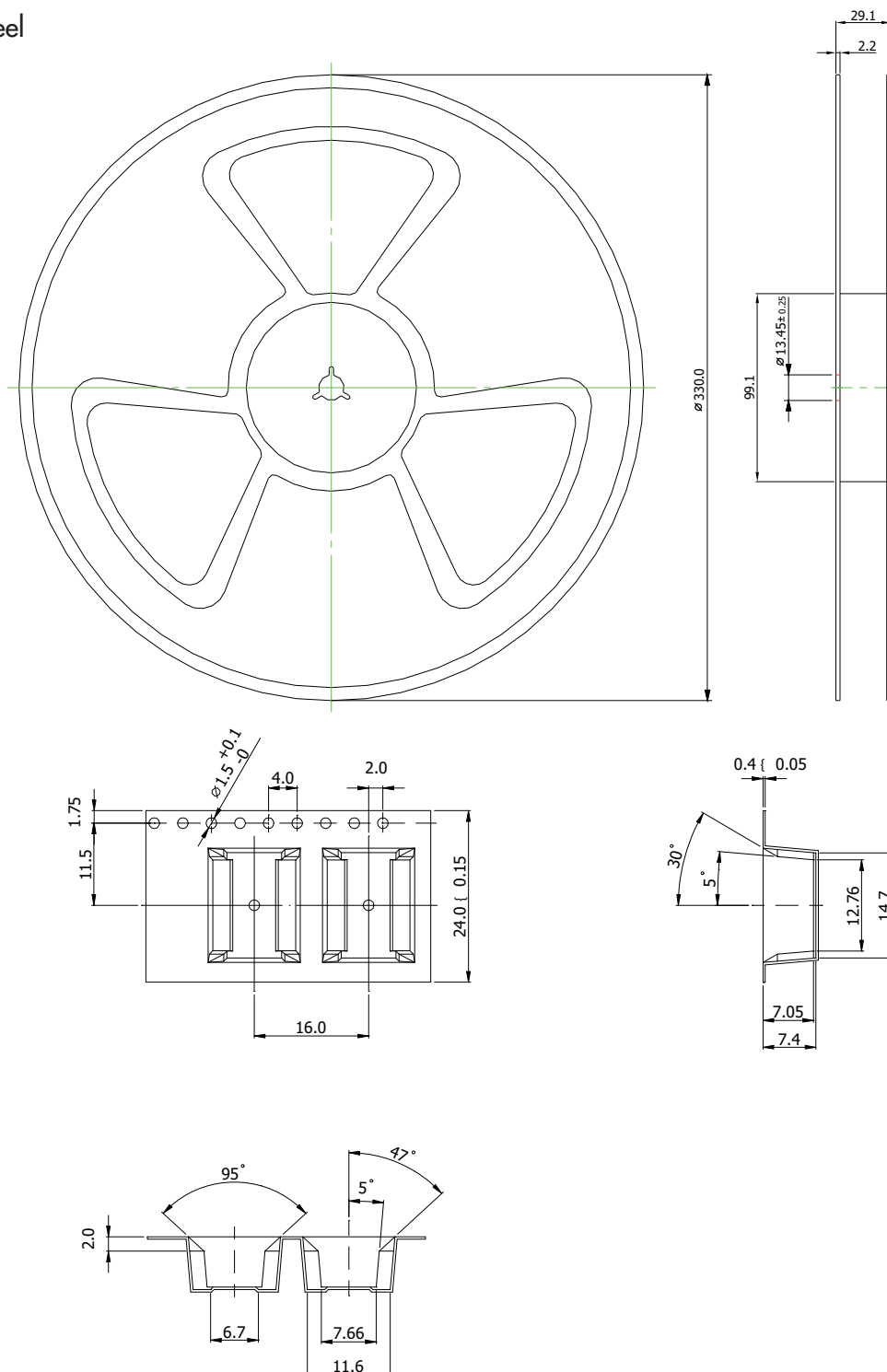


Tube, Tape & Reel dimension - Dual Output Models - 5 & 12Vin
Standard Packaging - Tube

- 1 Tube contains 10 converters


Optional Packaging - Tape & Reel

- Specifications according IEC 286-3
- 1 Reel contains 500 converters
- Use appendix «-TR» on order code

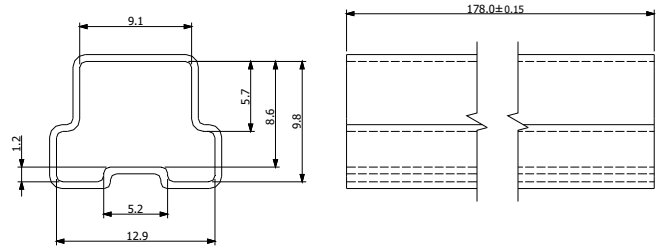


Dimensions in [mm], Tolerance $\pm 0.1\text{mm}$

Tube, Tape & Reel dimension - Dual Output Models - 24Vin

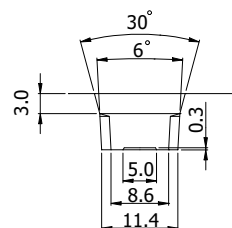
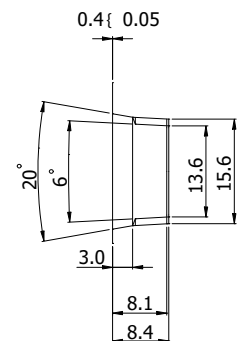
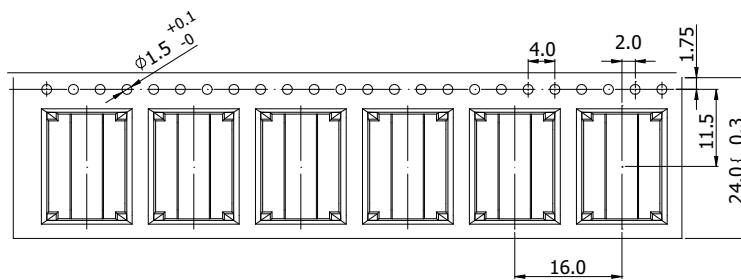
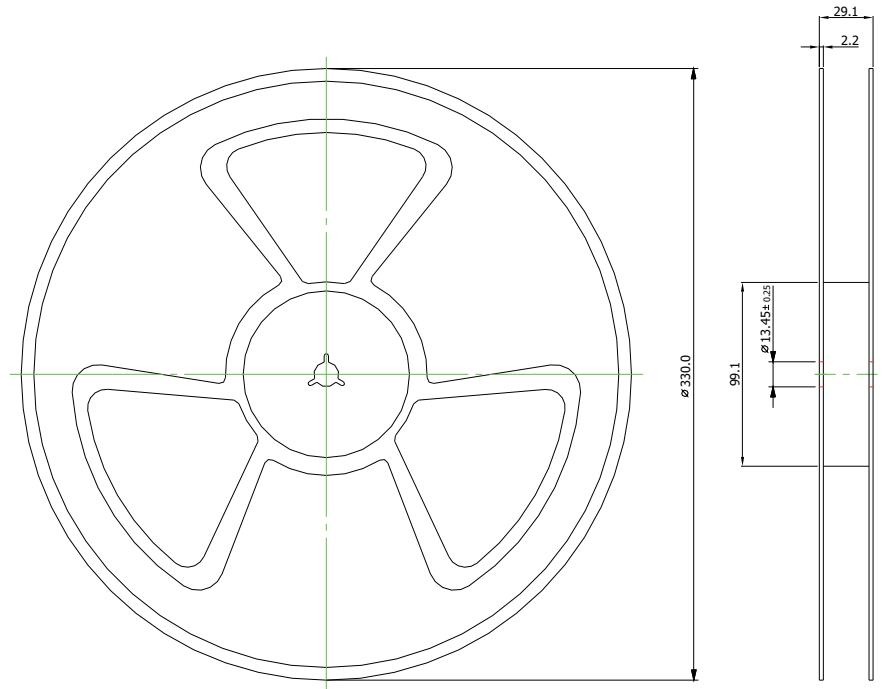
Standard Packaging - Tube

- 1 Tube contains 10 converters



Optional Packaging - Tape & Reel

- Specifications according IEC 286-3
- 1 Reel contains 500 converters
- Use appendix «-TR» on order code



Specifications can be changed any time without notice.

Dimensions in [mm], Tolerance $\pm 0.1\text{mm}$