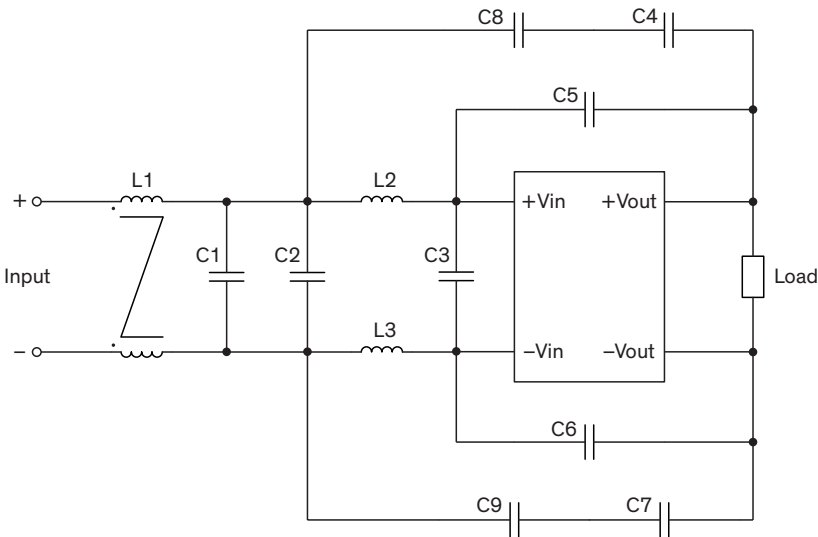
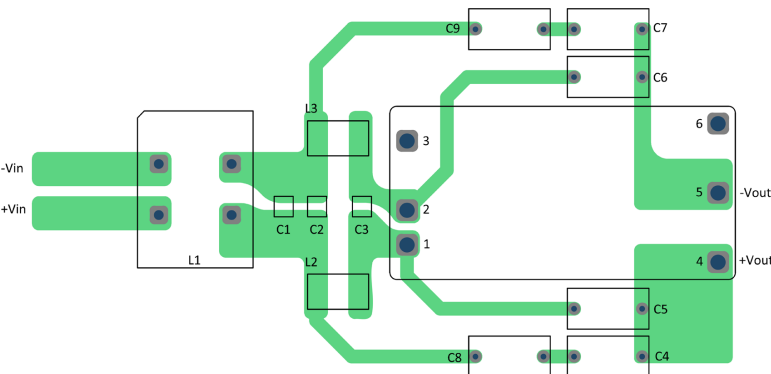


EMI Consideration

Suggested filter to comply with EN 55032 Conducted and Radiated Emissions Class A limits

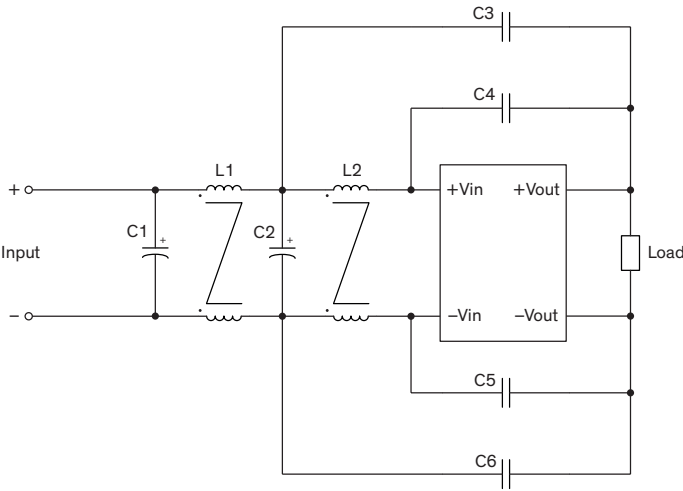


PCB layout suggestion (top view)

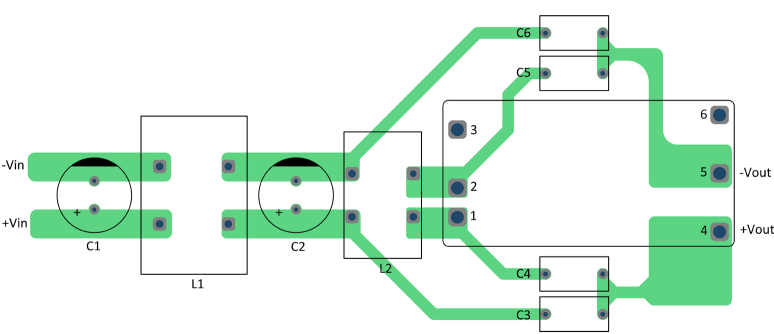


Suggested components to comply with EN 55032 Conducted and Radiated Emissions Class A limits						
Model	L1	C1, C3	L2, L3	C2	C4, C5, C6, C7	C8, C9
TEN 50-xxxx	1 mH / 15 A 3.3 mΩ 7448031501	4.7 μF / 100 V 1210	100 MHz / 5 A 580 Ω 7427512	3.3 μF / 100 V 1210	3300 pF 400 VAC Y1 capacitor	2200 pF 400 VAC Y1 capacitor

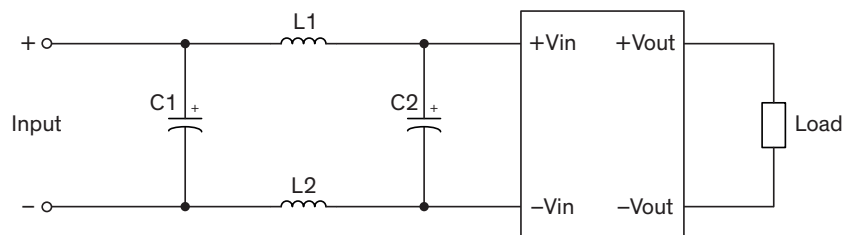
Suggested filter to comply with EN 55032 Conducted Emissions Class B limits



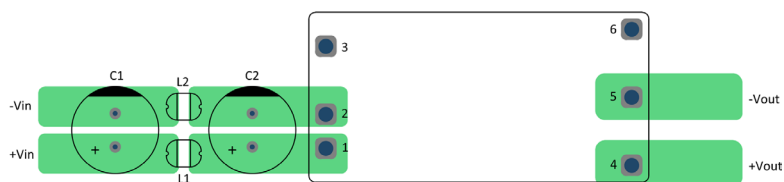
PCB layout suggestion (top view)



Suggested filter to comply with EN 55032 Conducted Emissions Class B limits							
Model	C1	L1	C2	L2	C3, C6	C4	C5
TEN 50-12xx	470 μ F 35 V KY	1 mH / 10 A 7 m Ω 744824101	470 μ F 35 V KY	1 mH / 15 A 28 m Ω 7448031501	1000 pF 400 VAC Y1 capacitor	2200 pF 400 VAC Y1 capacitor	2200 pF 400 VAC Y1 capacitor
TEN 50-24xx TEN 50-48xx	-	2.2 mH / 6 A 20 m Ω 744824622	470 μ F 100 V KY	9 mH / 5 A 28 m Ω 7448030509	4700 pF 400 VAC Y1 capacitor	-	

Suggested filter to comply with EFT (Burst) & Surge, perf. criteria A


PCB layout suggestion (top view)


Suggested components to comply with EFT (Burst) & Surge, perf. criteria A

Model	L1, L2	C1	C2
TEN 50-12xx	100 MHz / 6 A / 98 Ω 7427932	1800 μ F / 25 V / KY	1800 μ F / 25 V / KY
TEN 50-24xx	-	1200 μ F / 50 V / KY	-
TEN 50-48xx	4.7 μ H / 2.46 A 744773047	560 μ F / 100 V / KY	560 μ F / 100 V / KY