

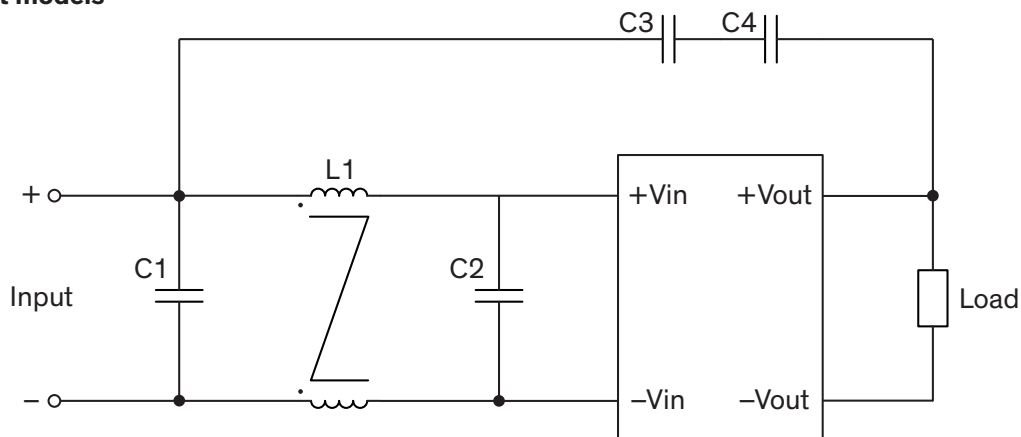
EMI Consideration

Suggested filter to comply with EN 55032 Conducted and Radiated Emissions Class A limits

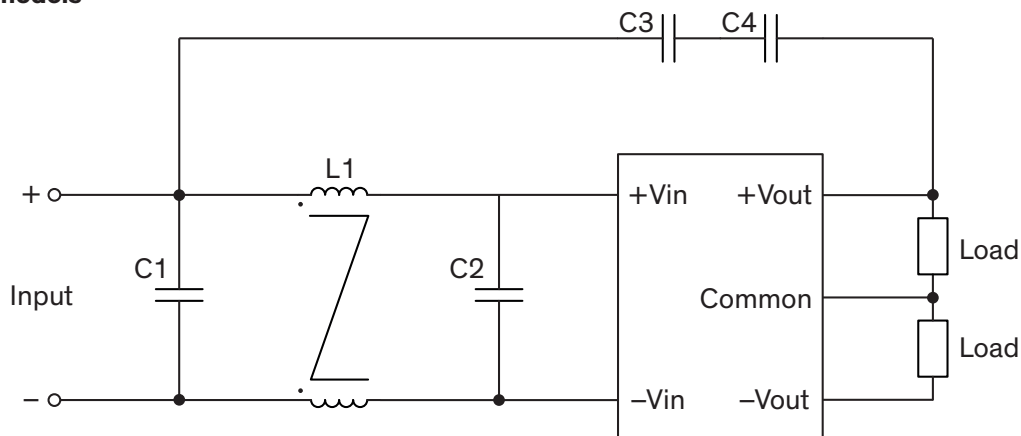
TIM 6 series complies with EN 55032 Conducted and Radiated Emissions Class A without external components.

Suggested filter to comply with EN 55032 Conducted and Radiated Emissions Class B limits

Single output models



Dual output models



Suggested components to comply with EN 55032 Conducted and Radiated Emissions Class B limits

Model	C1	C2	C3, C4	L1
TIM 6-12xx	22 μ F / 25 V 1210 X7R MLCC	-	100 pF / Y1	TCK-127
TIM 6-24xx	10 μ F / 50 V 1210 X7R MLCC			TCK-128
TIM 6-48xx	4.7 μ F / 100 V 1210 X7R MLCC	4.7 μ F / 100 V 1210 X7R MLCC		TCK-119

TCK-127 datasheet: www.tracopower.com/overview/tck-127

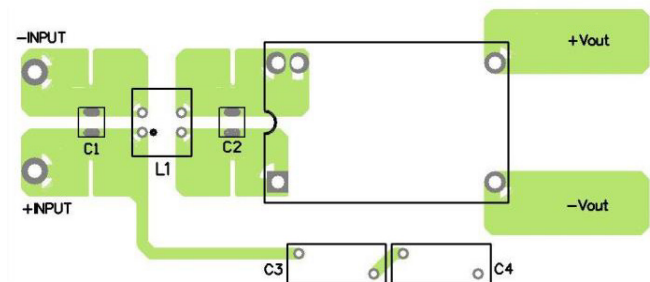
TCK-128 datasheet: www.tracopower.com/overview/tck-128

TCK-129 datasheet: www.tracopower.com/overview/tck-119

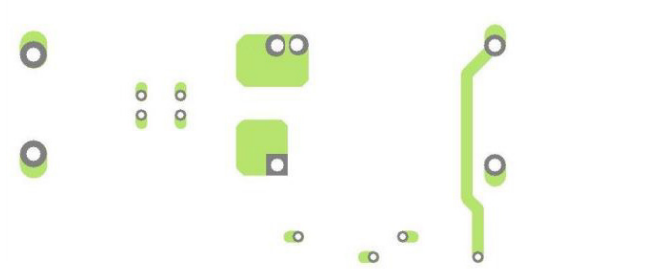
Suggested PCB layouts for both standard models and on-demand models with alternative pinning

Single output (Standard models)

Top View:

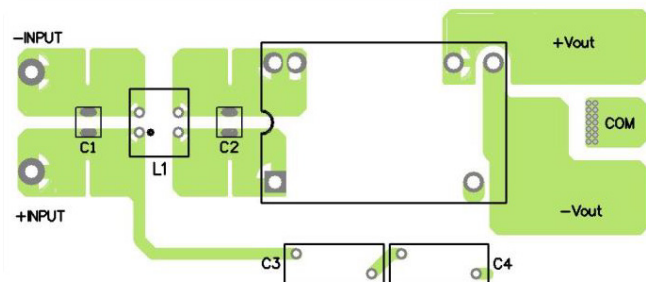


Bottom View:

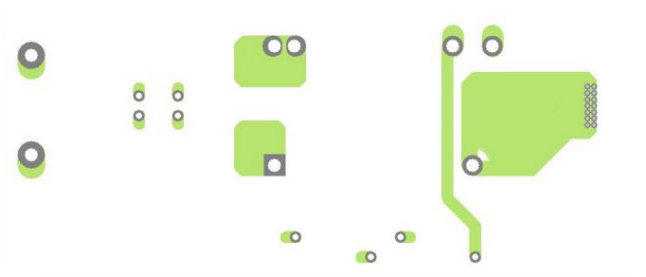


Dual output (Standard models)

Top View:



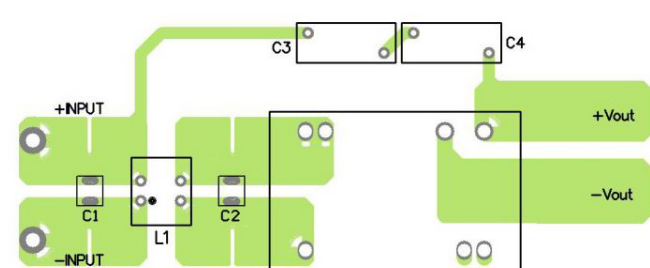
Bottom View:



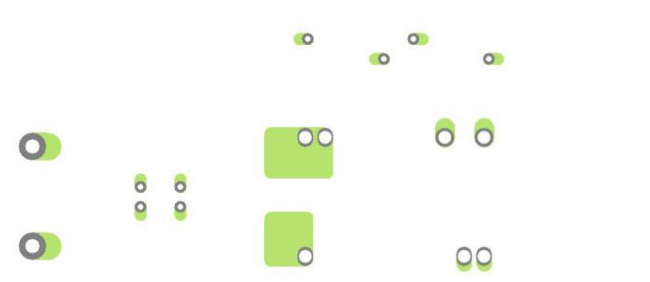
Single output

(On-demand models with alternative pinning)

Top View:



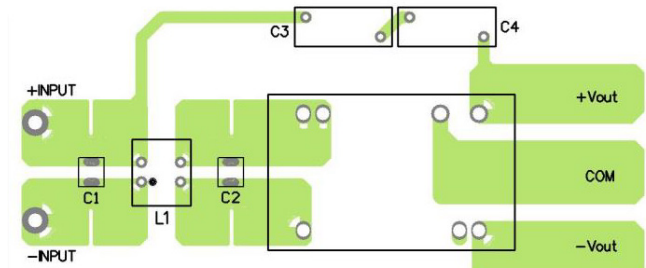
Bottom View:



Dual output

(On-demand models with alternative pinning)

Top View:



Bottom View:

