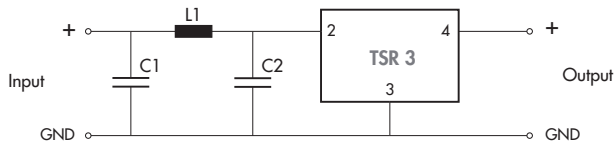


Application note

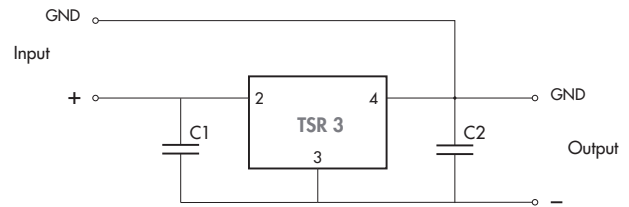
Input filter to reduce reflected ripple current

Positive output circuit



$C1 = 220 \mu\text{F}$, $\text{ESR} < 0.1 \text{ Ohm}$
 $C2 = 150 \mu\text{F}$
 $L1 = 8.2 \mu\text{H}$

Negative output circuit



$C1, C2 = 10 \mu\text{F}$ (MLCC) are required and must be placed close to the converter.