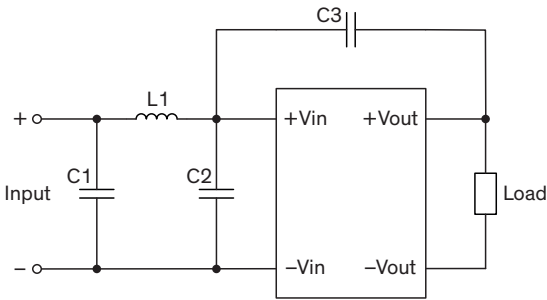


EMI Consideration

Suggested filter to comply with EN 55032 Conducted Emissions Class A limits



Suggested components to comply with EN 55032 Conducted Emissions Class A limits			
Model	C1	C2	L1
TMR 3-12xxWI	4.7 μ F / 50 V, 1210 X7R	220 pF / 2 KV, 1808 X7R	2.2 μ H / 2.6 A, SCD0403T
TMR 3-24xxWI	4.7 μ F / 50 V, 1210 X7R	220 pF / 2 KV, 1808 X7R	4.7 μ H / 1.7 A, SCD0403T
TMR 3-48xxWI	4.7 μ F / 100 V, 1210 X7R	220 pF / 2 KV, 1808 X7R	4.7 μ H / 1.7 A, SCD0403T