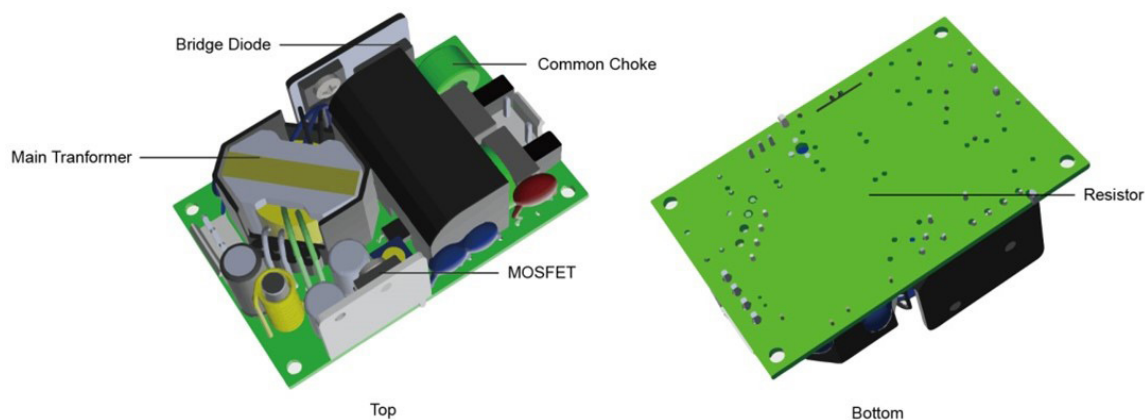


## Thermal Consideration

### Max. temperature of key components

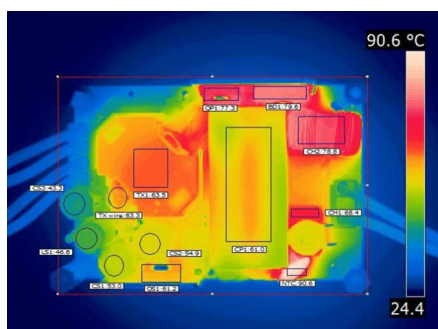


Component	Bridge Diode	Common Choke	MOSFET	Diode	Main Transformer
Temp. limit [°C]	120	125	120	120	125

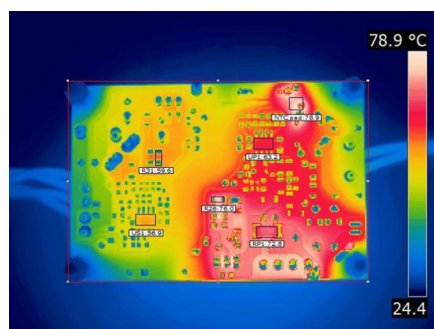
Note: - TPP 65-124A-J is chosen as a representative model in this document.

### Thermal cam images

115 Vin; Full Load; Natural Convection; Top View



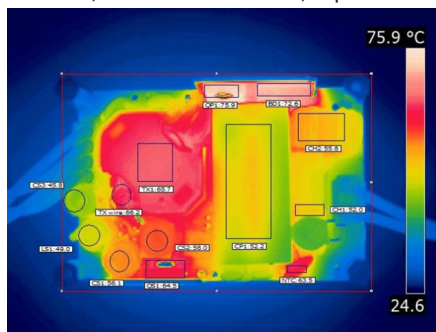
115 Vin; Full Load; Natural Convection; Bottom View



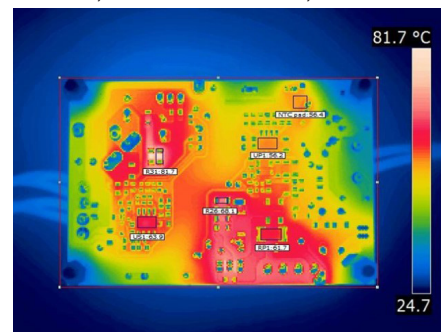
Component	TX1 wire	TX1 core	CS1	CS2	CS3	LS1	QP1	QS1	CP1
Temp. [°C]	63.3	63.5	53	54.9	43.3	46.6	77.3	61.2	61

Component	BD1	CH1	CH2	NTC	UP1	US1	RP1	R26	R31
Temp. [°C]	79.6	68.4	78.8	90.6	63.2	56.9	72.8	76	59.6

230 Vin; Full Load; Natural Convection; Top View



230 Vin; Full Load; Natural Convection; Bottom View



Component	TX1 wire	TX1 core	CS1	CS2	CS3	LS1	QP1	QS1	CP1
Temp. [°C]	66.2	65.7	56.1	58	45.6	49	75.9	64.5	52.2

Component	BD1	CH1	CH2	NTC	UP1	US1	RP1	R26	R31
Temp. [°C]	72.6	52	55.6	63.5	56.2	63.9	61.7	68.1	81.7