

### EMI Consideration

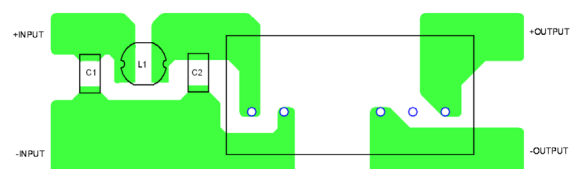
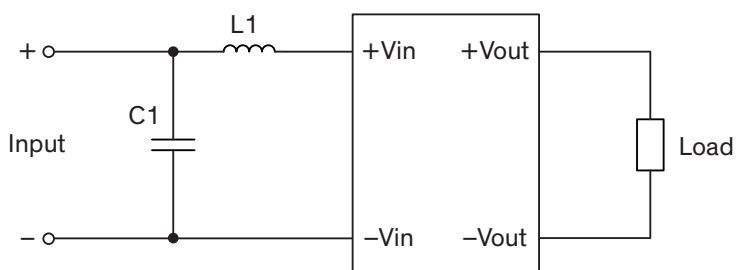
#### Suggested filter to comply with EN 55032 Radiated Emissions Class A limits

TMV-EN series meet EN 55032 Radiated Emissions Class A without external components.

#### Suggested filter to comply with EN 55032 Conducted Emissions Class A limits

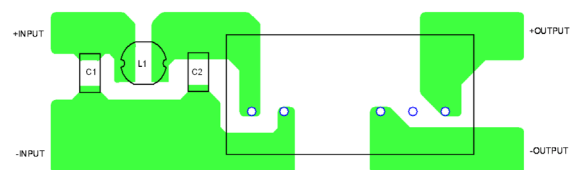
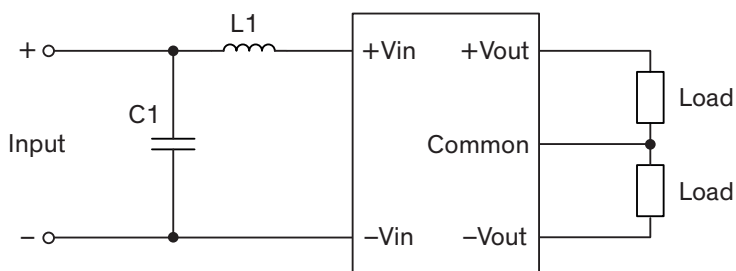
#### Single output models

#### PCB layout suggestion



#### Dual output models

#### PCB layout suggestion



#### Suggested components to comply with EN 55032 Conducted Emissions Class A limits

Model	C1	L1
TMV xxxx EN TMV xxxxD EN	10 $\mu$ F / 25 V	6.8 $\mu$ H