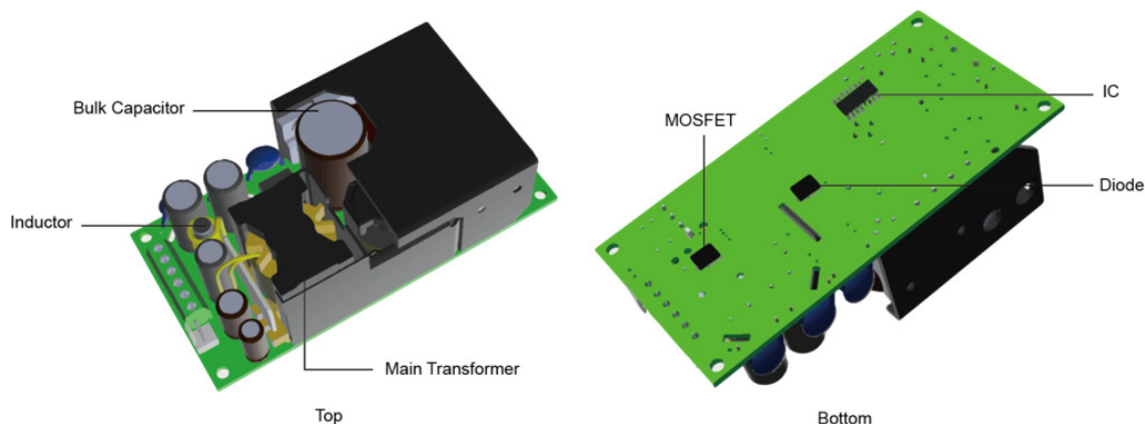


Thermal Consideration

Max. temperature of key components

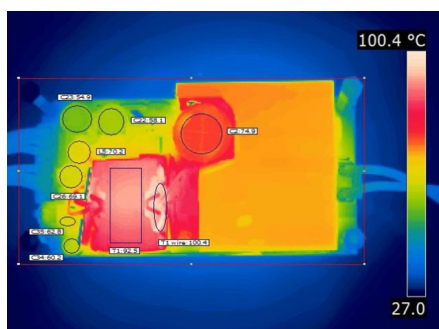


Component	Bridge Diode	Inductor	MOSFET	Bulk Cap.	PWM IC	Diode	Main Transformer
Temp. limit [°C]	120	125	120	105	120	120	125

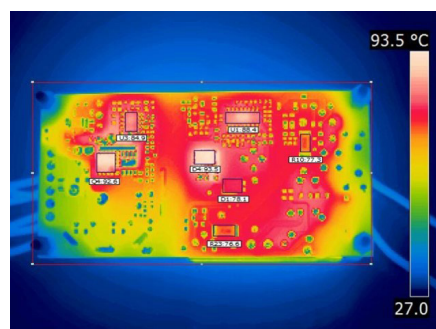
Note: - TPI 150-124A-J is chosen as a representative model in this document.

Thermal cam images

115 Vin; Full Load; Natural Convection; Top View



115 Vin; Full Load; Natural Convection; Bottom View

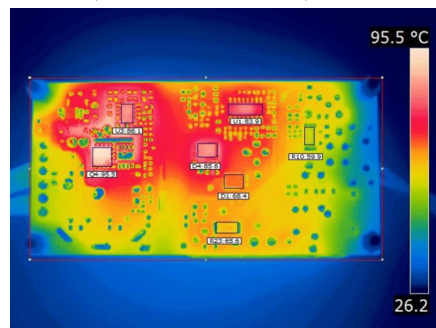


Component	T1 wire	T1 core	Q4	L5	C26	C22	C23	C34	C35	C2	U1	U3	D1	D4	R10	R23
Temp. [°C]	100.4	92.5	92.6	70.2	69.1	58.1	54.9	60.2	62.8	74.9	88.4	84.9	78.1	93.5	77.3	76.6

230 Vin; Full Load; Natural Convection; Top View



230 Vin; Full Load; Natural Convection; Bottom View



Component	T1 wire	T1 core	Q4	L5	C26	C22	C23	C34	C35	C2	U1	U3	D1	D4	R10	R23
Temp. [°C]	99.1	94.4	95.5	75	71.2	61.1	59.1	64.3	68.4	67.4	83.9	86.1	68.4	85.6	59.9	65.6