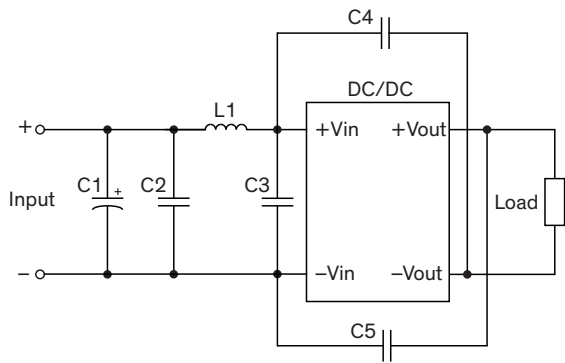


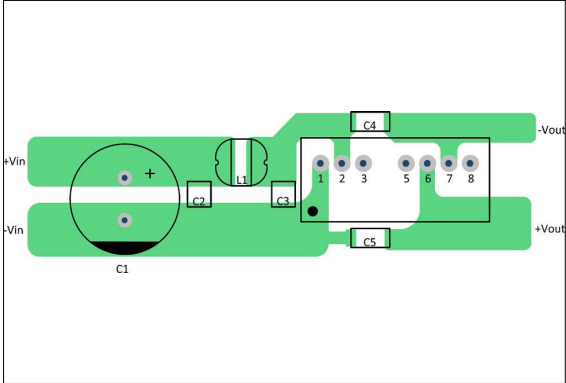
EMC Consideration

Suggested filter to comply with EN 55032 Conducted and Radiated Emissions Class A, EFT & Surge

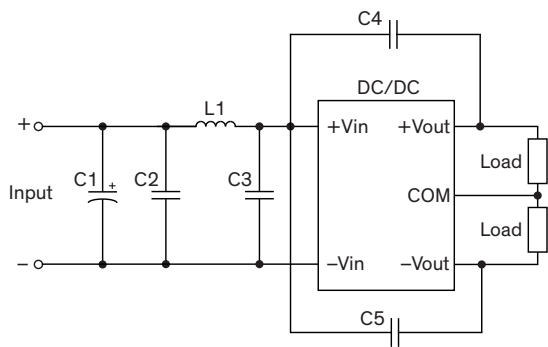
Single output models



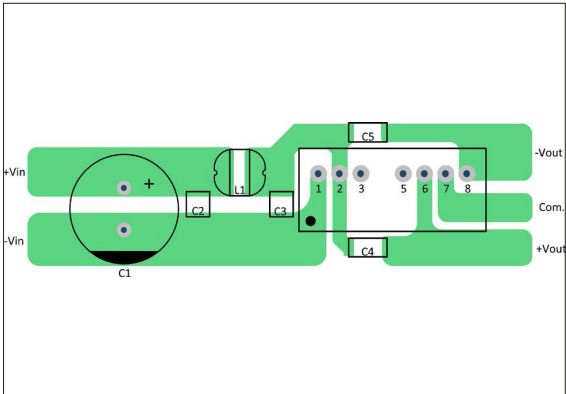
PCB layout suggestion



Dual output models



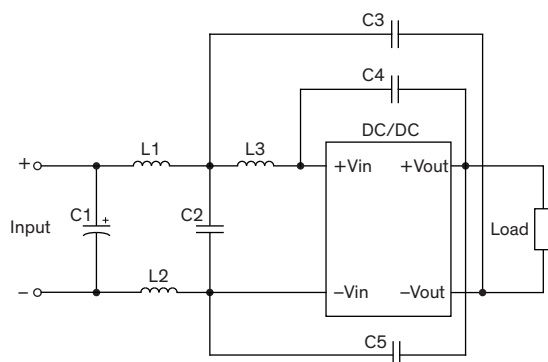
PCB layout suggestion



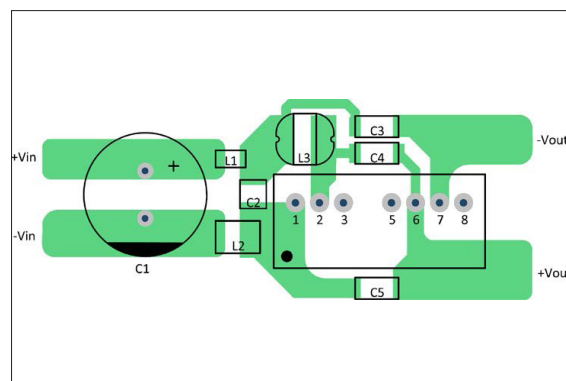
Suggested components to comply with EN 55032 Conducted and Radiated Emissions Class A, EFT & Surge					
Model	C1	C2	L1	C3	C4, C5
TMR 4-24xxWI	330 µF / 80 V chemi-con KY	4.7 µF / 50 V 1210 X5R	4.7 µH SCD0403T	4.7 µF / 50 V 1210 X5R	220 pF / 2 kV 1808 X7R
TMR 4-48xxWI	330 µF / 100 V chemi-con KY	4.7 µF / 100 V 1210 X5R	4.7 µH SCD0403T	4.7 µF / 100 V 1210 X5R	220 pF / 2 kV 1808 X7R

Suggested filter to comply with EN 55032 Conducted and Radiated Emissions Class B, EFT & Surge

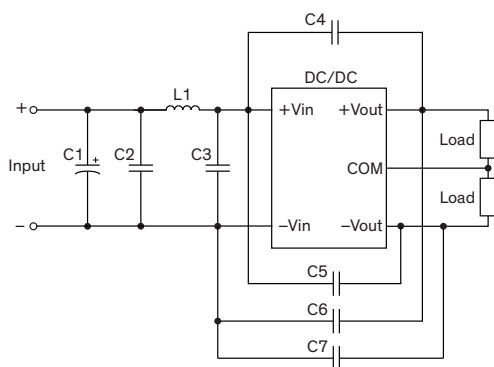
Single output models



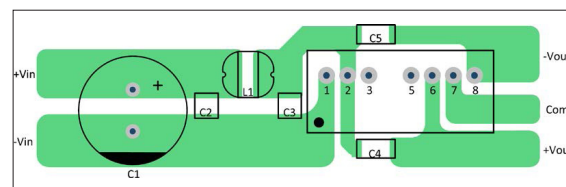
PCB layout suggestion



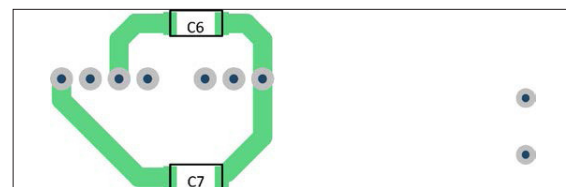
Dual output models



PCB layout suggestion (Top view)



PCB layout suggestion (Bottom view)



Suggested components to comply with EN 55032 Conducted and Radiated Emissions Class B, EFT & Surge

Model	C1	L1	L2	C2	L3	C3	C4, C5	C6, C7
TMR 4-241xWI	330 μ F / 80 V chemi-con KY	742792133	74279252	4.7 μ F / 50 V 1210 X5R	18 μ H SCD0504T	220 pF / 2 kV 1808 X7R	220 pF / 2 kV 1808 X7R	-
TMR 4-242xWI	330 μ F / 80 V chemi-con KY	4.7 μ H SCD0403T	-	4.7 μ F / 50 V 1210 X5R	-	4.7 μ F / 50 V 1210 X5R	220 pF / 2 kV 1808 X7R	220 pF / 2 kV 1808 X7R
TMR 4-481xWI	330 μ F / 100 V chemi-con KY	742792133	74279252	4.7 μ F / 100 V 1210 X5R	18 μ H SCD0504T	220 pF / 2 kV 1808 X7R	220 pF / 2 kV 1808 X7R	-
TMR 4-482xWI	330 μ F / 100 V chemi-con KY	4.7 μ H SCD0403T	-	4.7 μ F / 100 V 1210 X5R	-	4.7 μ F / 100 V 1210 X5R	220 pF / 2 kV 1808 X7R	220 pF / 2 kV 1808 X7R