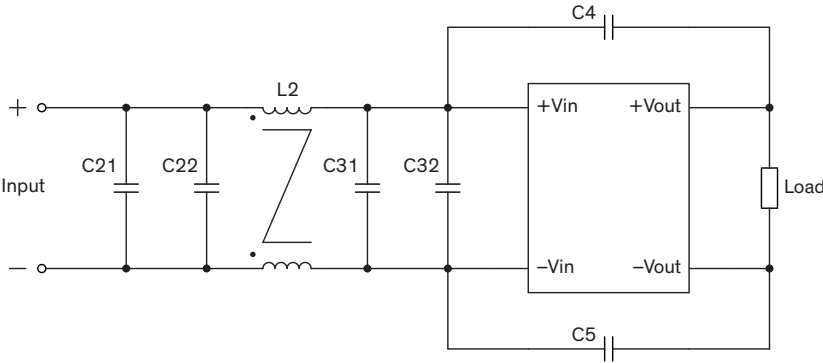


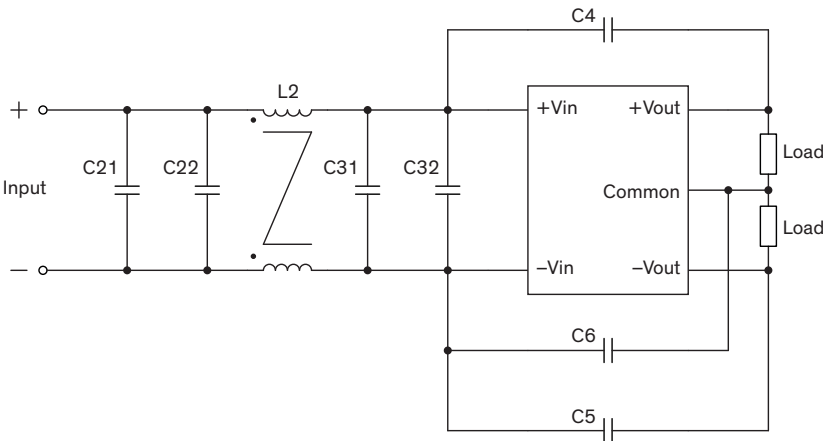
EMI Consideration

Suggested filter to comply with EN 55032 Conducted and Radiated Emissions Class A limits

Single output models (TEC 3-241xUI)



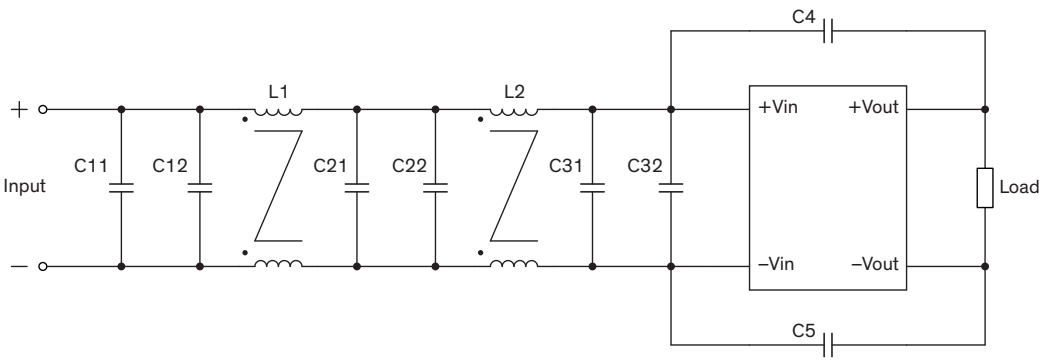
Dual output models (TEC 3-242xUI)



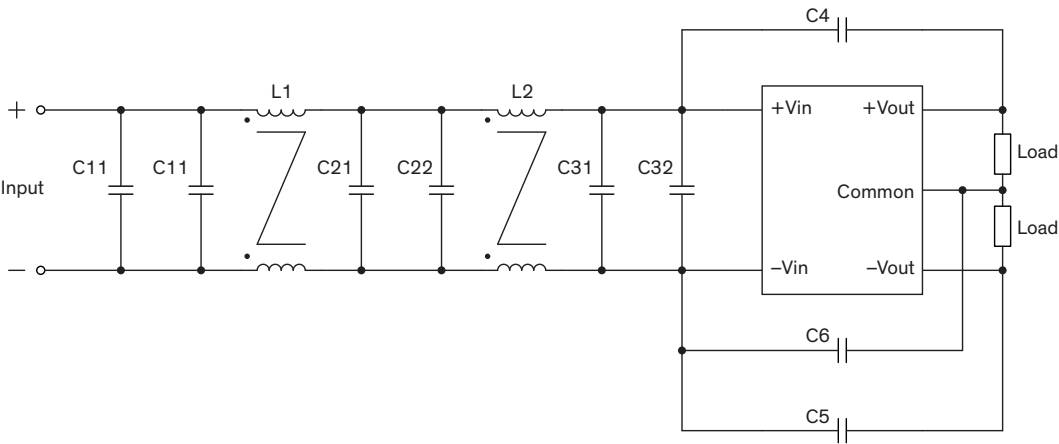
Suggested components to comply with EN 55032 Conducted and Radiated Emissions Class A limits				
Model	C21, C22, C31, C32	C4, C5	C6	L2
TEC 3-241xUI	4.7 μ F / 100 V	470 pF / 2 kV	-	130 μ H
TEC 3-242xUI			470 pF / 2 kV	

Suggested filter to comply with EN 55032 Conducted and Radiated Emissions Class B limits

Single output models (TEC 3-241xUI)



Dual output models (TEC 3-242xUI)



Suggested components to comply with EN 55032 Conducted and Radiated Emissions Class B limits					
Model	C11, C12, C21, C22, C31, C32	C4, C5	C6	L1	L2
TEC 3-241xUI	4.7 μ F / 100 V	470 pF / 2 kV	-	1 mH	27 μ H
TEC 3-242xUI			470 pF / 2 kV		