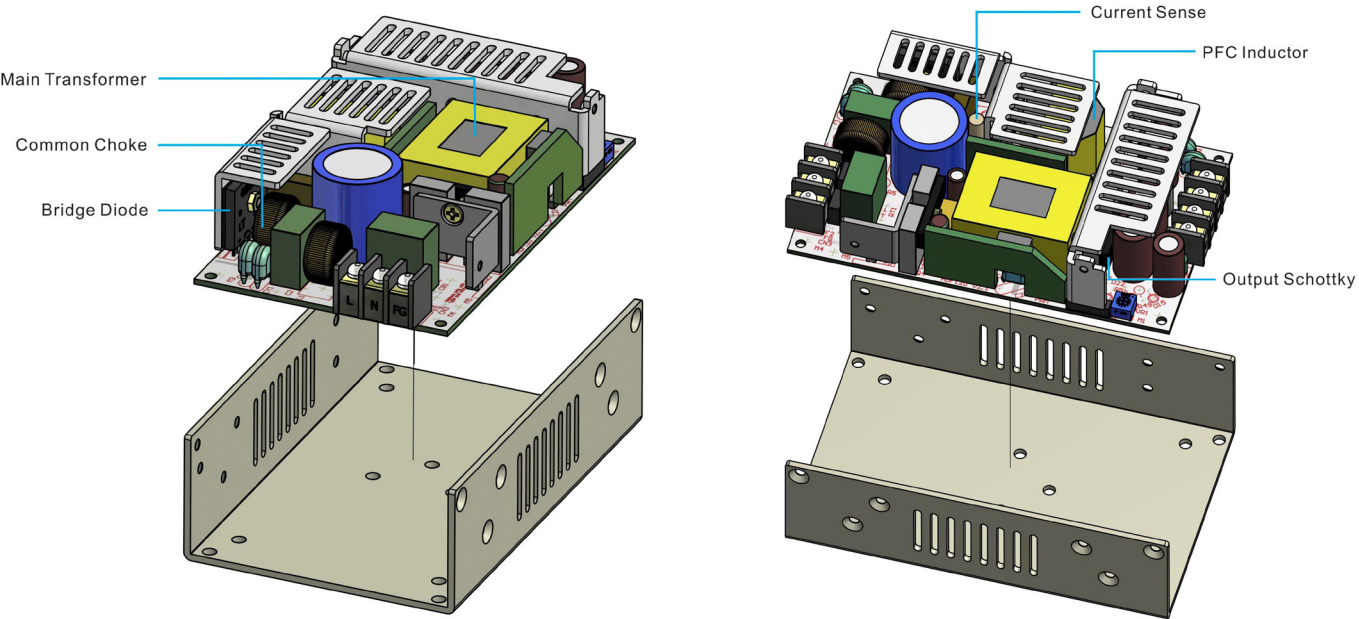


Thermal Consideration

Max. temperature of key components

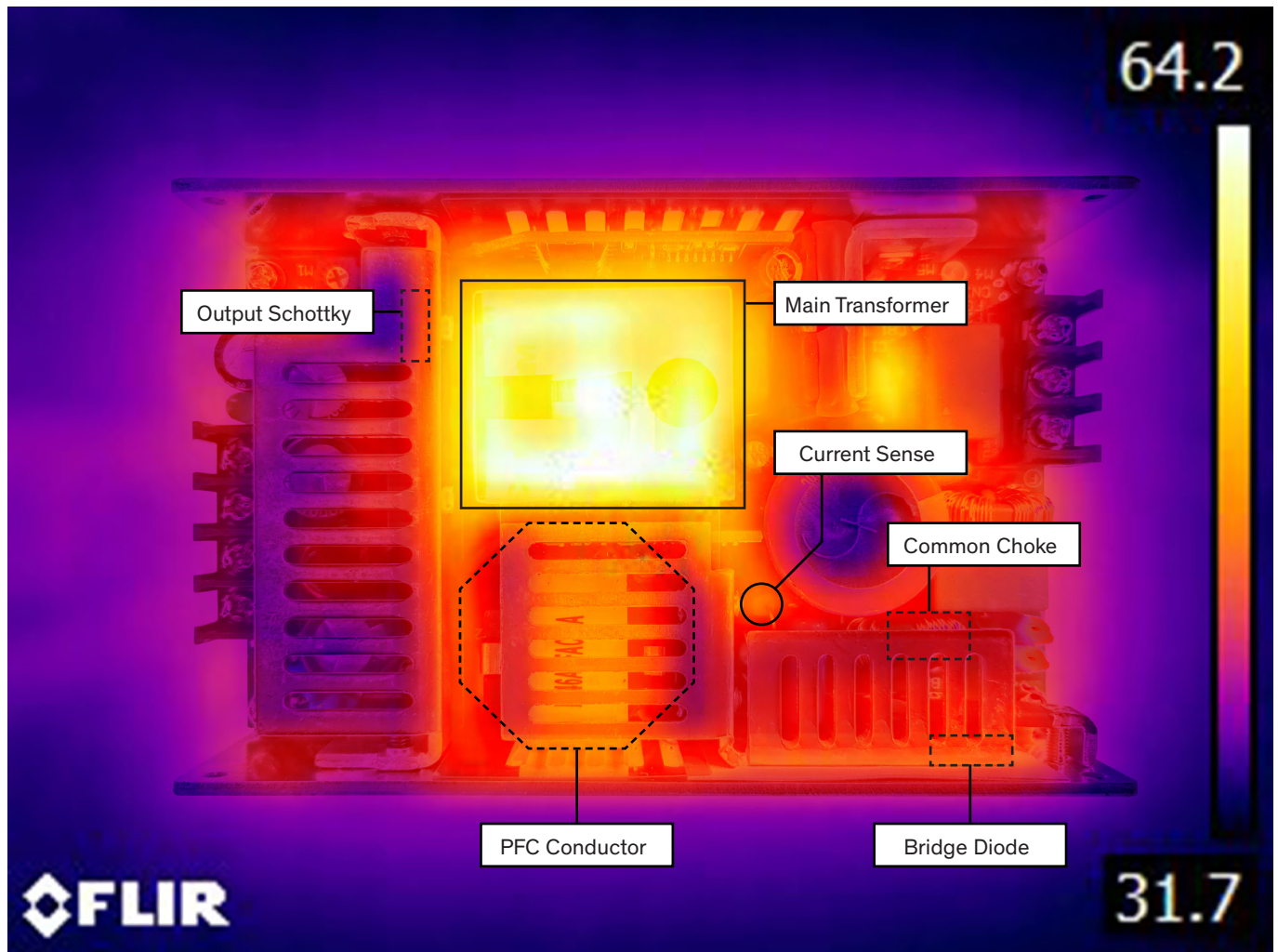


Component	Bridge Diode	Common Chocke	Main Transformer	Output Schottky	Current Sense	PFC Inductor
Temp. limit [°C]	120.0	120.0	110.0	120.0	120.0	130.0

Note: - TXH 120-112 is chosen as a representative model in this document.

Thermal cam images, taken at Ambient Temperature $\approx 27^{\circ}\text{C}$

Top View, Full Load



Temperature measurements at Ambient Temperature $\approx 50^{\circ}\text{C}$

Component	Bridge Diode	Common Choke	Main Transformer	Output Schottky	Current Sense	PFC Inductor	Ambient
Temp. [$^{\circ}\text{C}$] at 115 Vin	86.0	81.8	90.9	94.8	90.0	99.0	50.0
Temp. [$^{\circ}\text{C}$] at 230 Vin	76.8	70.8	88.6	91.3	80.0	89.2	