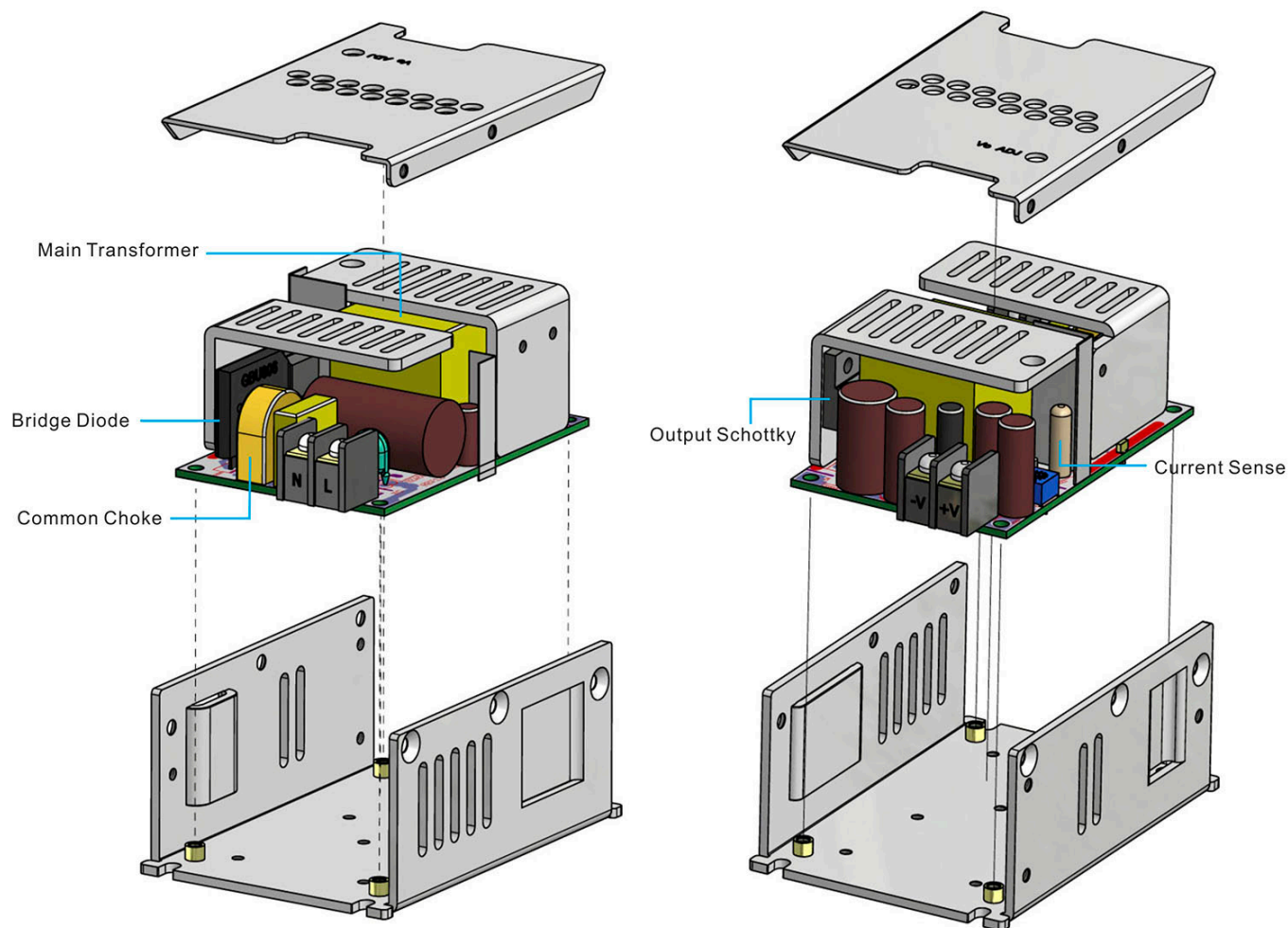


Thermal Consideration

Max. temperature of key components

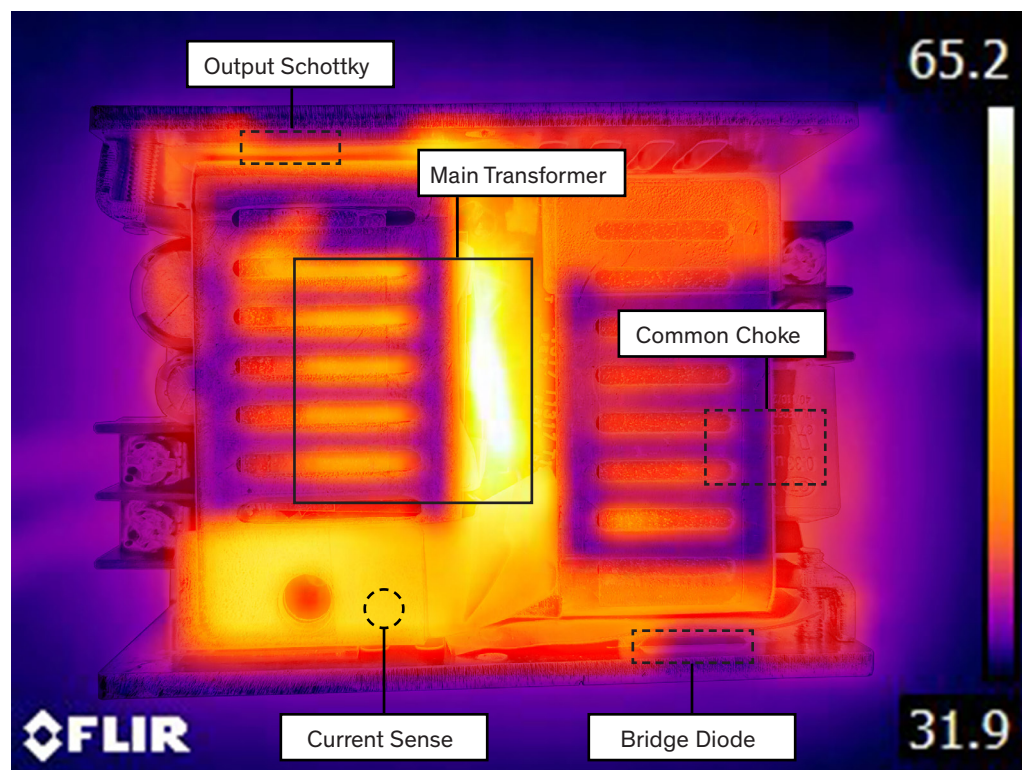


Component	Bridge Diode	Common Choke	Main Transformer	Output Schottky	Current Sense
Temp. limit [°C]	120.0	120.0	110.0	120.0	120.0

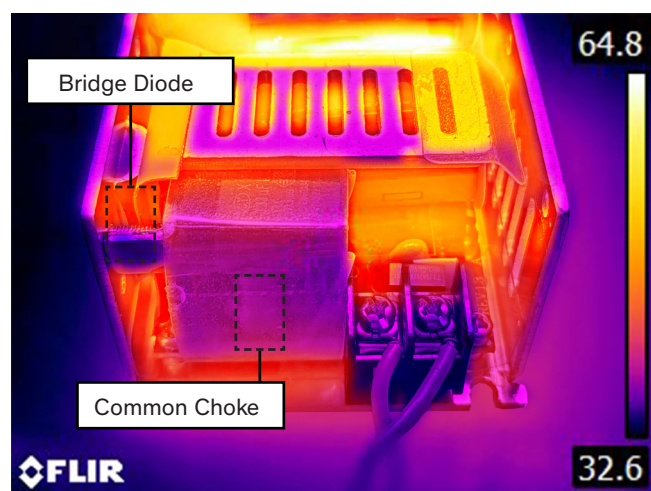
Note: - TXH 060-112 is chosen as a representative model in this document.

Thermal cam images, taken at Ambient Temperature $\approx 27^{\circ}\text{C}$

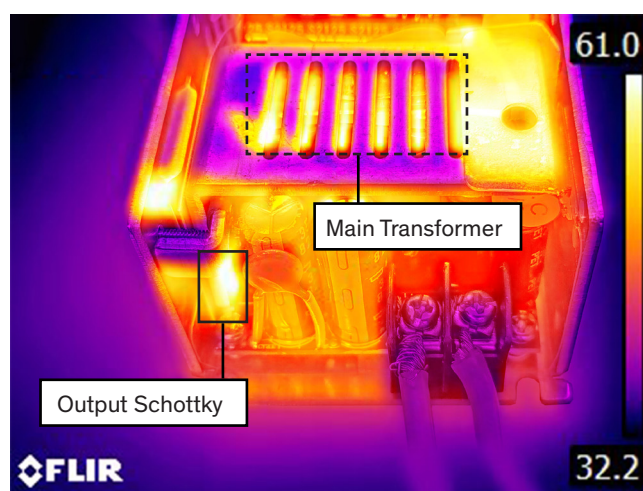
Top View, Full Load



Input, Full Load



Output, Full Load



Temperature measurements at Ambient Temperature $\approx 50^{\circ}\text{C}$

Component	Bridge Diode	Common Choke	Main Transformer	Output Schottky	Current Sense	Ambient
Temp. [$^{\circ}\text{C}$] at 115 Vin	85.6	89.0	105.6	88.7	92.8	50.0
Temp. [$^{\circ}\text{C}$] at 230 Vin	79.1	80.0	103.6	87.0	88.4	