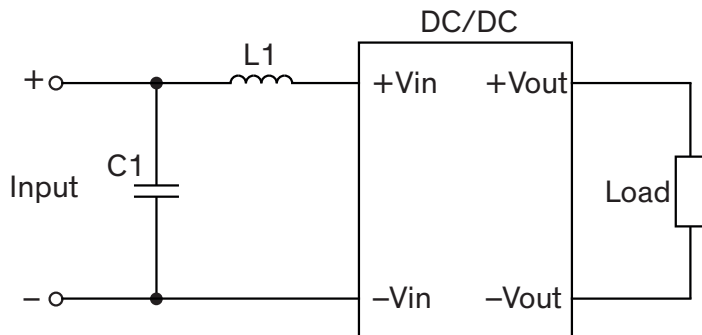


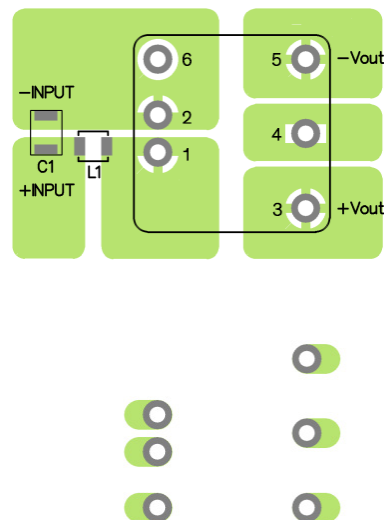
EMI Consideration

Suggested filter to comply with EN 55032 Radiated and Conducted Emissions Class A limits

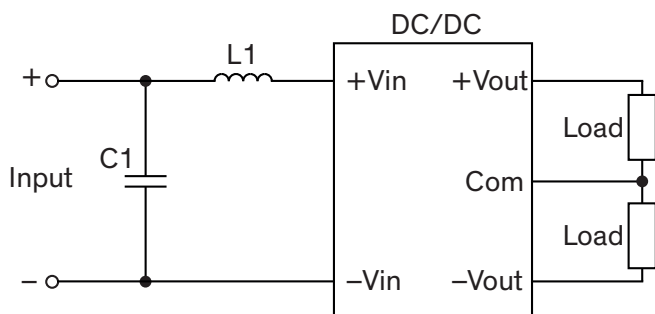
Single output models



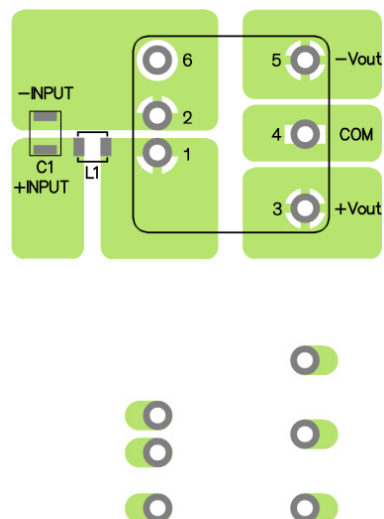
PCB layout suggestion



Dual output models



PCB layout suggestion



Suggested components to comply with EN 55032 Conducted and Radiated Emissions Class A limits

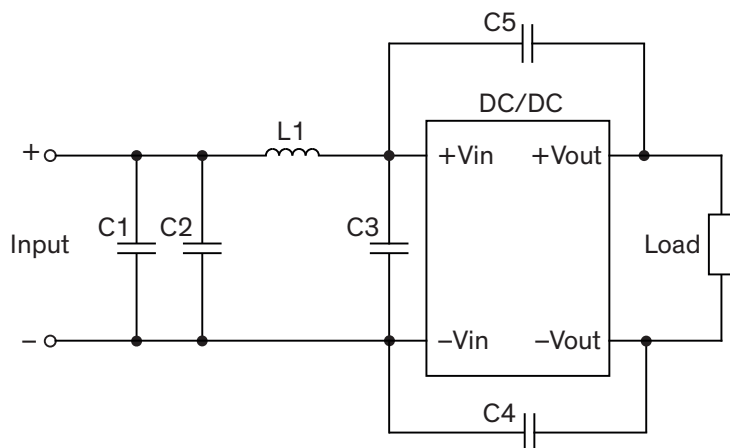
Model	C1	L1
THN 30-12xx	4.7 μ F / 25 V 1812 MLCC	2.2 μ H / 11 A / 0.012 Ohm SMD-Inductor, TCK-097
THN 30-24xx	4.7 μ F / 50 V 1812 MLCC	2.2 μ H / 11 A / 0.012 Ohm SMD-Inductor, TCK-097
THN 30-48xx	4.7 μ F / 100 V 1812 MLCC	10 μ H / 2.6 A / 0.04 Ohm SMD-Inductor, TCK-070

TCK-097 datasheet: www.tracopower.com/overview/tck-097

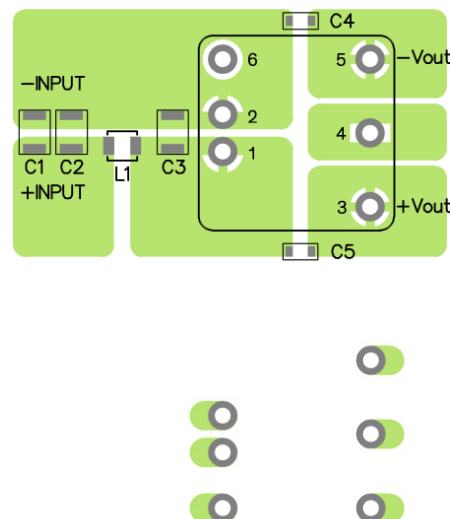
TCK-070 datasheet: www.tracopower.com/overview/tck-070

Suggested filter to comply with EN 55032 Conducted and Radiated Emissions Class B limits

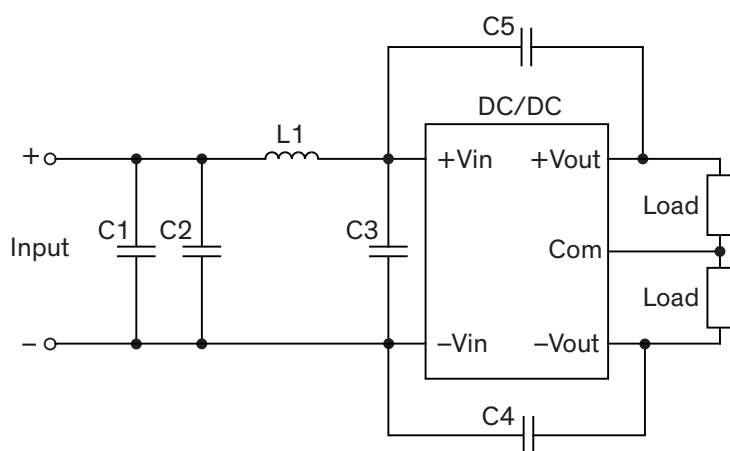
Single output models



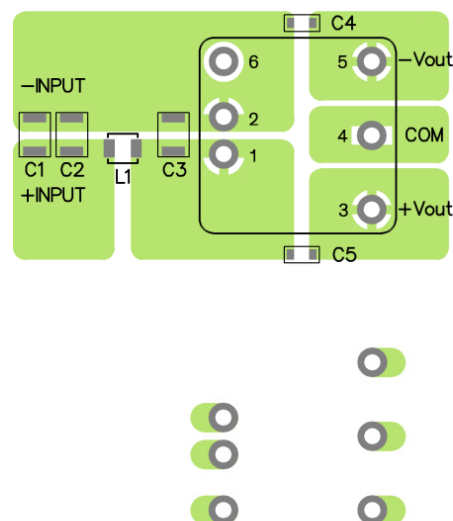
PCB layout suggestion



Dual output models



PCB layout suggestion



Suggested components to comply with EN 55032 Conducted and Radiated Emissions Class B limits

Model	C1, C2, C3	C4, C5	L1
THN 30-12xx	4.7 µF / 25 V 1812 MLCC	1000 pF / 2 kV 1206 MLCC	2.2 µH / 11 A / 0.012 Ohm SMD-Inductor, TCK-097
THN 30-24xx	4.7 µF / 50 V 1812 MLCC	1000 pF / 2 kV 1206 MLCC	2.2 µH / 11 A / 0.012 Ohm SMD-Inductor, TCK-097
THN 30-48xx	4.7 µF / 100 V 1812 MLCC	2200 pF / 2 kV 1206 MLCC	10 µH / 2.6 A / 0.04 Ohm SMD-Inductor, TCK-070

TCK-097 datasheet: www.tracopower.com/overview/tck-097

TCK-070 datasheet: www.tracopower.com/overview/tck-070