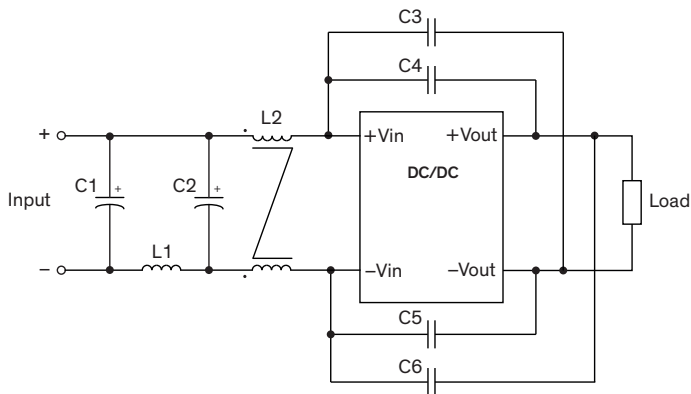


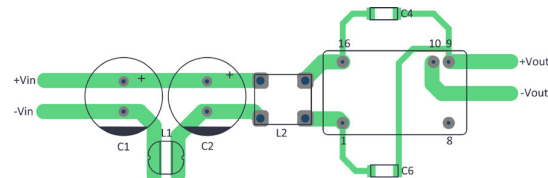
EMI Consideration

Suggested filter to comply with EN 55032 Radiated Emissions Class A, EFT & Surge

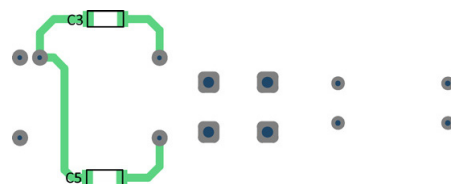
Single output models



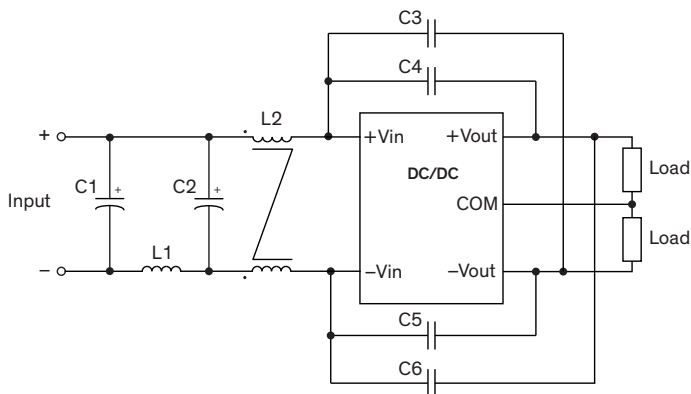
PCB layout suggestion (top)



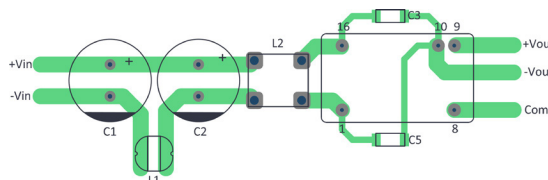
PCB layout suggestion (bottom)



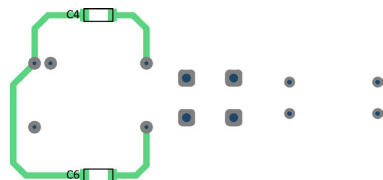
Dual output models



PCB layout suggestion (top)



PCB layout suggestion (bottom)



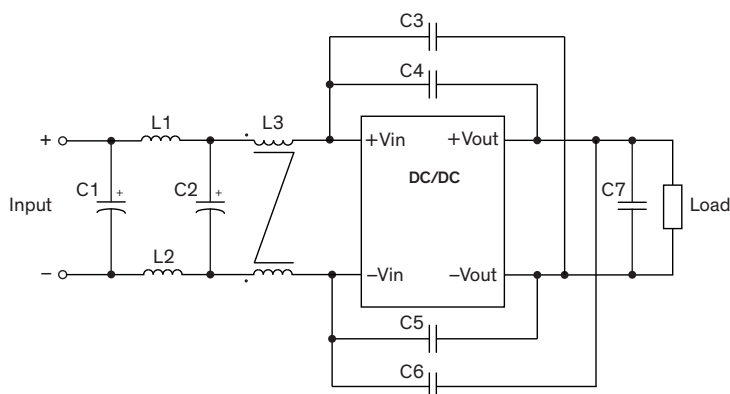
Suggested components to comply with EN 55032 Radiated Emissions Class A, EFT & Surge

Model	C1, C2	L1	L2	C3, C6	C4, C5
TEL 12-121x	560 μ F / 50 V chemi-con KY	10 μ H / 2.2 A / 100 Ω 74477410	-	-	1000 pF / 2 kV 1808 X7R
TEL 12-122x	560 μ F / 50 V chemi-con KY	10 μ H / 2.2 A / 100 Ω 74477410	-	-	1000 pF / 2 kV 1808 X7R
TEL 12-241x	470 μ F / 50 V chemi-con KY	10 μ H / 2.2 A / 100 Ω 74477410	-	-	1000 pF / 2 kV 1808 X7R
TEL 12-242x	470 μ F / 50 V chemi-con KY	10 μ H / 2.2 A 74477410	-	-	1000 pF / 2 kV 1808 X7R

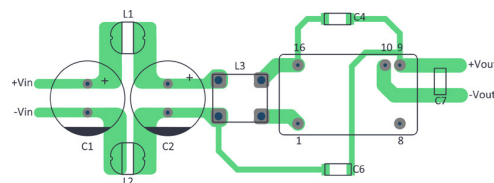
Model	C1, C2	L1	L2	C3, C4	C5, C6
TEL 12-481x	150 μ F / 50 V chemi-con KY	56 μ H / 0.77 A / 420 Ω 744774156	30 μ H / 1.4 A / 40 m Ω 744273222	1000 pF / 2 kV 1808 X7R	680 pF / 2 kV 1808 X7R
TEL 12-482x	150 μ F / 50 V chemi-con KY	56 μ H / 0.77 A / 420 Ω 744774156	30 μ H / 1.4 A / 40 m Ω 744273222	100 pF / 2 kV 1808 X7R	680 pF / 2 kV 1808 X7R

Suggested filter to comply with EN 55032 Conducted and Radiated Emissions Class B, EFT & Surge

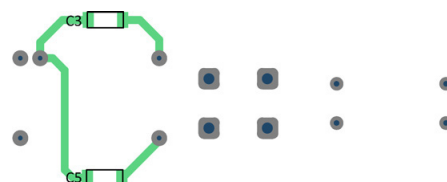
Single output models



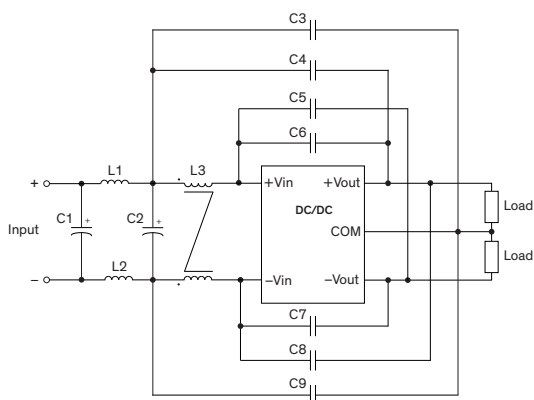
PCB layout suggestion (top)



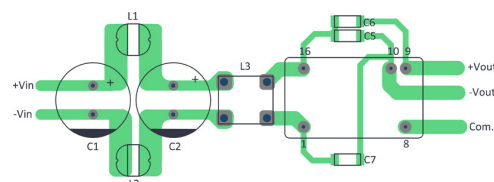
PCB layout suggestion (bottom)



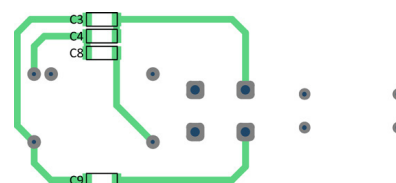
Dual output models



PCB layout suggestion (top)



PCB layout suggestion (bottom)



Suggested components to comply with EN 55032 Conducted and Radiated Emissions Class B, EFT & Surge

Model	C1, C2	L1, L2	L3	C3, C8, C9	C4, C5	C6, C7
TEL 12-121x	560 μ F / 50 V chemi-con KY	10 μ H / 2.2 A / 78 m Ω 74477410	7.5 μ H / 3 A / 26 m Ω SH-302	-	680 pF / 2 kV 1808 X7R	-
TEL 12-122x	560 μ F / 50 V chemi-con KY	10 μ H / 2.2 A / 78 m Ω 74477410	7.5 μ H / 3 A / 26 m Ω SH-302	-	-	680 pF / 2 kV 1808 X7R
TEL 12-241x	470 μ F / 50 V chemi-con KY	10 μ H / 2.2 A / 78 m Ω 74477410	7.5 μ H / 3 A / 26 m Ω SH-302	-	680 pF / 2 kV 1808 X7R	-
TEL 12-242x	470 μ F / 50 V chemi-con KY	10 μ H / 2.2 A / 78 m Ω 74477410	7.5 μ H / 3 A / 26 m Ω SH-302	-	-	680 pF / 2 kV 1808 X7R

Model	C1, C2	L1, L2	L3	C3, C7	C4	C5	C6	C8, C9
TEL 12-481x	220 μ F / 100 V chemi-con KY	56 μ H / 0.77 A 298 m Ω 744774156	14 μ H / 4 A 15 m Ω 744841414	3300 pF / 3 kV 1808 X7R	-	470 pF / 2 kV 1808 X7R	330 pF / 3 kV 1808 X7R	-

Model	C1, C2	L1, L2	L3	C3	C4, C9	C5, C8	C6	C7
TEL 12-482x	220 μ F / 100 V chemi-con KY	56 μ H / 0.77 A 298 m Ω 744774156	14 μ H / 4 A 15 m Ω 744841414	680 pF / 2 kV 1808 X7R	330 pF / 3 kV 1808 X7R	3300 pF / 3 kV 1808 X7R	-	470 pF / 2 kV 1808 X7R