

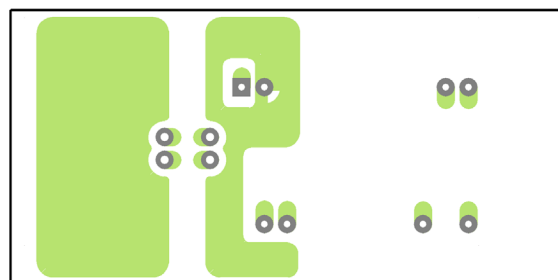
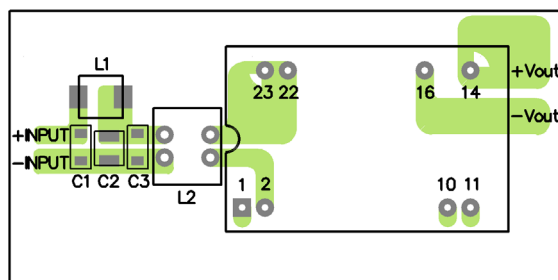
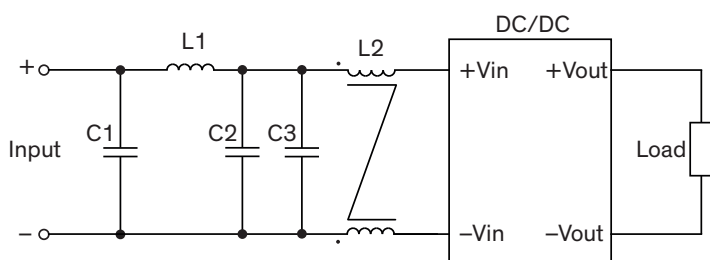
EMI Consideration

Suggested filter to comply with EN 55032 conducted and radiated emissions Class A limits

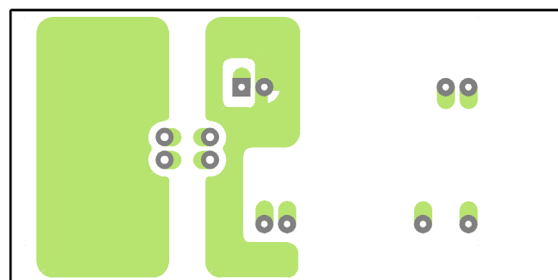
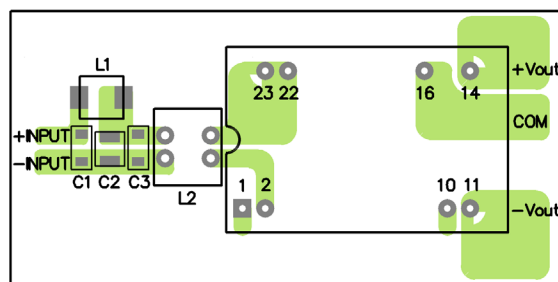
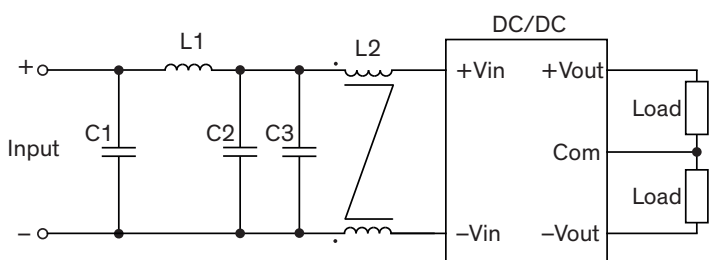
THM 10 and THM 10WI series meet EN 55032 conducted and radiated emissions Class A without external components.

Suggested filter to comply with EN 55032 conducted and radiated emissions Class B limits

Single output models



Dual output models



EMI Consideration
Suggested components to comply with EN 55032 Conducted and Radiated Emissions Class B limits

Model	C1	C2	C3	L1	L2
THM 10-05xx THM 10-05xxWI	-	22 μ F / 16 V 1206 MLCC	22 μ F / 16 V 1206 MLCC	3.3 μ H / 3.3 A SMD Inductor TCK-108	52 μ H Common Mode Choke TCK-117
THM 10-12xx THM 10-24xx THM 10-24xxWI	4.7 μ F / 50 V 1206 MLCC	4.7 μ F / 50 V 1206 MLCC	-	10 μ H / 2.3 A SMD Inductor TCK-116	175 μ H Common Mode Choke TCK-118
THM 10-48xx THM 10-48xxWI	1 μ F / 100 V 1206 MLCC	4.7 μ F / 100 V 1210 MLCC	-	10 μ H / 2.3 A SMD Inductor TCK-116	419 μ H Common Mode Choke TCK-119

TCK-108 datasheet: www.tracopower.com/overview/tck-108

TCK-116 datasheet: www.tracopower.com/overview/tck-116

TCK-117 datasheet: www.tracopower.com/overview/tck-117

TCK-118 datasheet: www.tracopower.com/overview/tck-118

TCK-119 datasheet: www.tracopower.com/overview/tck-119