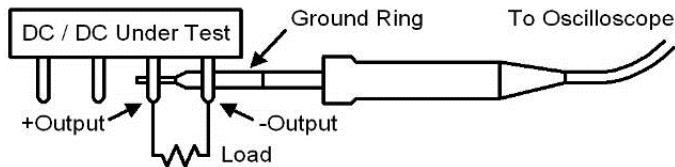
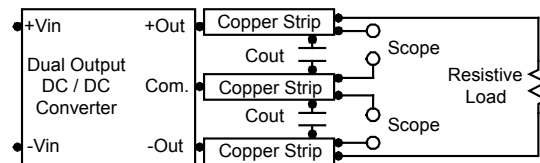
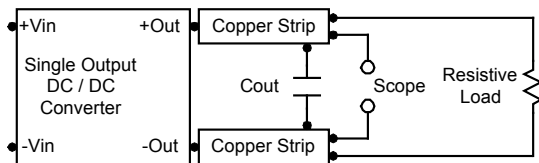


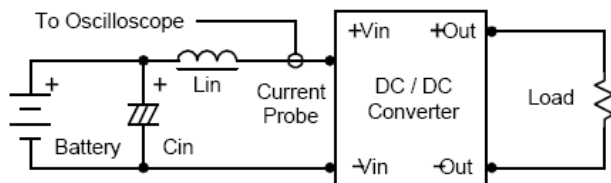
Ripple and Noise

Output Ripple & Noise	Nominal	Max
(0-20MHz bandwidth)	60 mVp-p	100 mVp-p
(Over Line, Load & Temp.)	---	150 mVp-p

Peak-to-peak output ripple & noise measurement test up



Input reflected-ripple current measurement test up



Component	Value	Reference
Lin	4.7μH	-----
Cin	220μF	Aluminum Electrolytic Capacitor