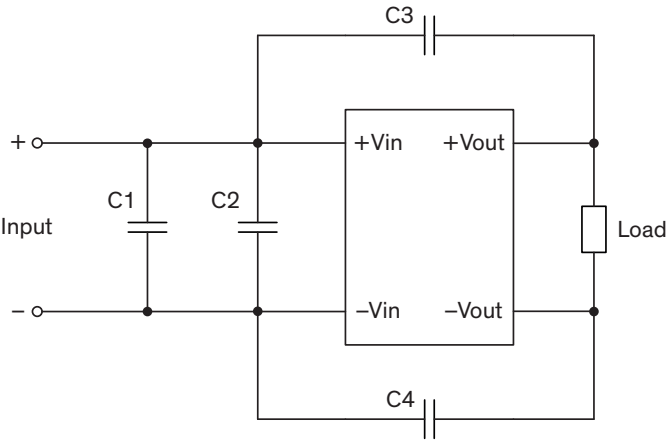


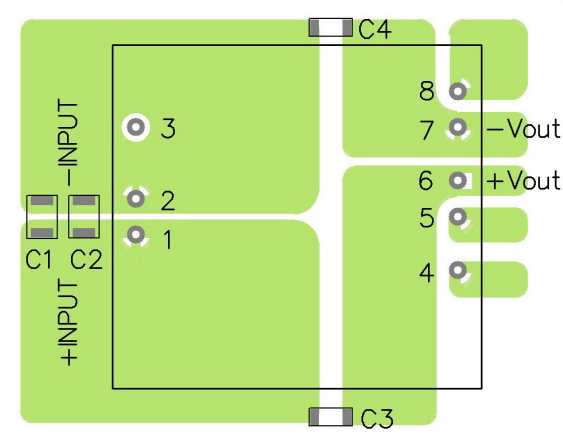
EMI Consideration

Suggested filter to comply with EN 55032 Conducted and Radiated Emissions Class A limits

Circuit suggestions



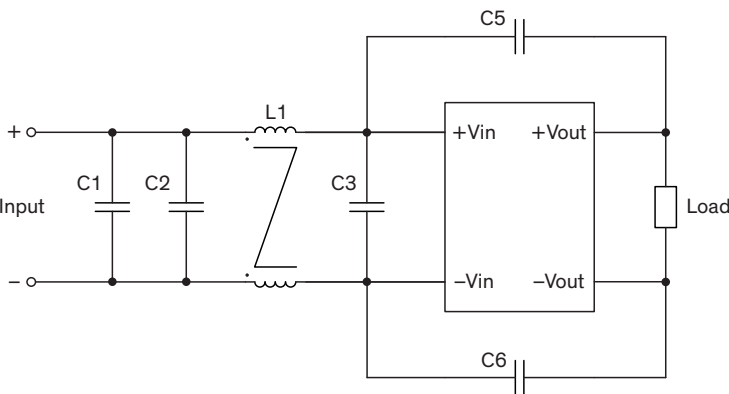
PCB layout suggestion



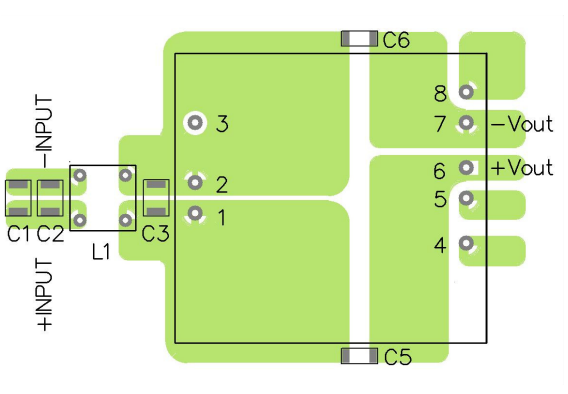
| Suggested components to comply with EN 55032 Conducted and Radiated Emissions Class A limits | | | |
|--|---------------------------------|---------------------------------|-----------------------------|
| Model | C1 | C2 | C3, C4 |
| TEN 60-24xx | - | 6.8 μ F / 50 V / 1812 MLCC | 1'000 pF / 2 kV / 1808 MLCC |
| TEN 60-48xx | 2.2 μ F / 100 V / 1812 MLCC | 2.2 μ F / 100 V / 1812 MLCC | |

Suggested filter to comply with EN 55032 Conducted and Radiated Emissions Class B limits

Circuit suggestions



PCB layout suggestion



| Suggested components to comply with EN 55032 Conducted and Radiated Emissions Class B limits | | | | | |
|--|----------------------------------|----------------------------------|----------------------------------|------------------------------|--------------------------------|
| Model | C1 | C2 | C3 | C5, C6 | L1 |
| TEN 60-24xx | 4.7 μ F / 50 V 1812 MLCC | - | 4.7 μ F / 50 V 1812 MLCC | 1'000 pF / 2 kV 1808 MLCC | 450 μ H / 5.2A TCK-048 |
| TEN 60-48xx | 2.2 μ F / 100 V 1812 MLCC | 2.2 μ F / 100 V 1812 MLCC | 2.2 μ F / 100 V 1812 MLCC | | 830 μ H / 3.3 A TCK-053 |

TCK-048 datasheet: www.tracopower.com/overview/tck-048

TCK-053 datasheet: www.tracopower.com/overview/tck-053