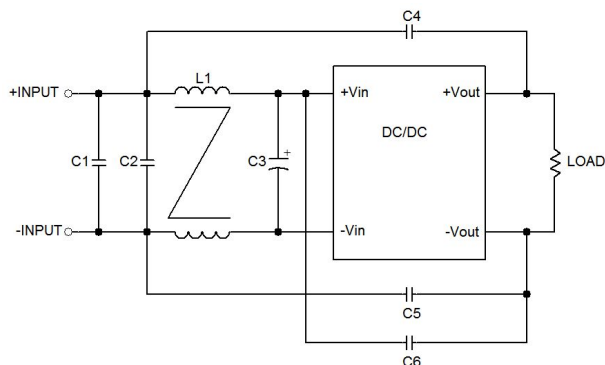


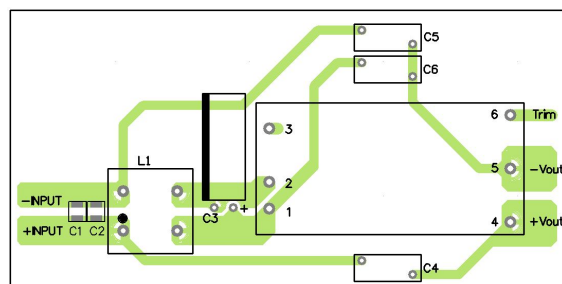
### EMI Consideration

Suggested filter to comply with EN 55032 Conducted and Radiated Emissions Class A limits

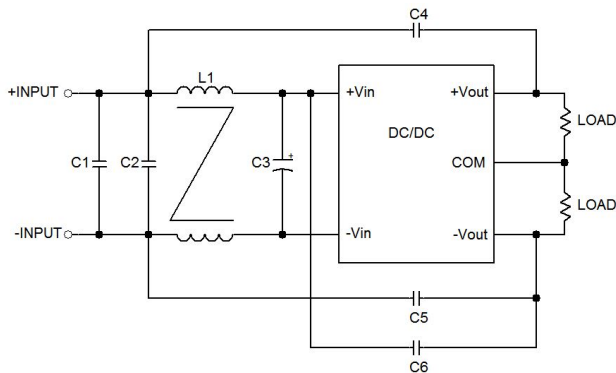
#### Single output models



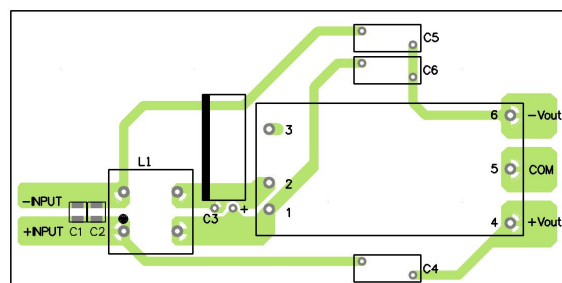
#### PCB layout suggestion



#### Dual output models



#### PCB layout suggestion

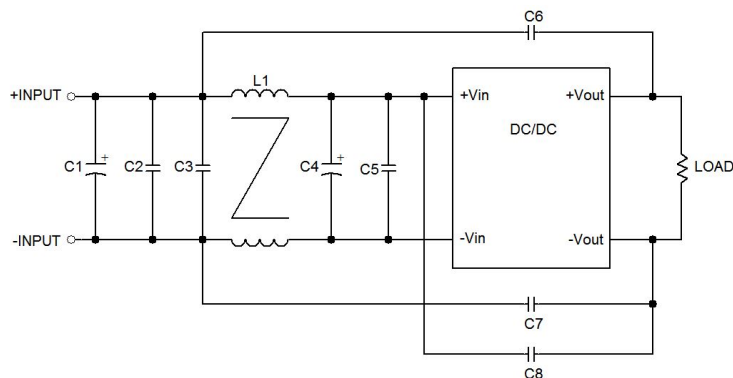


### Suggested components to comply with EN 55032 Conducted and Radiated Emissions Class A limits

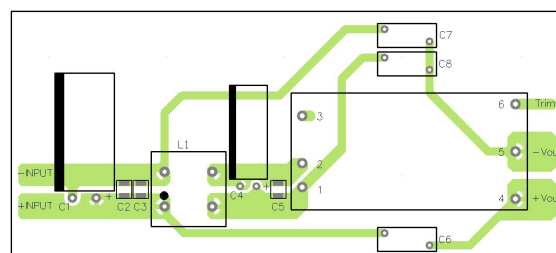
Model	C1	C2	C3	C4	C5	C6	L1
TEN 40-12xxE TEN 40-24xxE TEN 40-24xxWIE	-	10 $\mu$ F / 50 V 1210 MLCC	-	1000 pF / Y1 TDK CD series	-	-	398 $\mu$ H TCK-177
TEN 40-48xxE TEN 40-48xxWIE	2.2 $\mu$ F / 100 V 1210 MLCC	2.2 $\mu$ F / 100 V 1210 MLCC	100 $\mu$ F / 100 V Al Cap. (lie down) Rubycon ZLH	330 pF / Y1 TDK CD series	680 pF / Y1 TDK CD series	330 pF / Y1 TDK CD series	398 $\mu$ H TCK-177

### Suggested filter to comply with EN 55032 Conducted and Radiated Emissions Class B limits

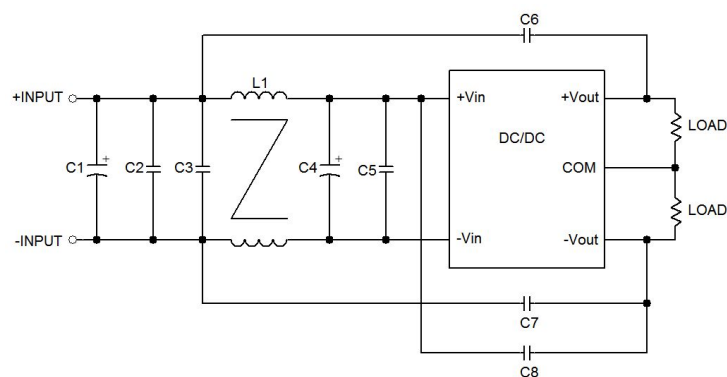
#### Single output models



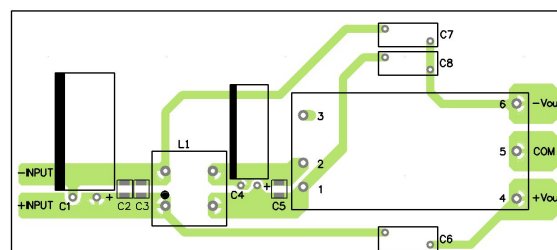
#### PCB layout suggestion



#### Dual output models



#### PCB layout suggestion



### Suggested components to comply with EN 55032 Conducted and Radiated Emissions Class B limits

Model	C3	C4	C6	C7	C8	L1
TEN 40-12xxE TEN 40-24xxE TEN 40-24xxWIE	10 $\mu$ F / 50 V 1210 MLCC	270 $\mu$ F / 50 V Al Cap. (lie down) Rubycon ZLH	1000 pF / Y1 TDK CD series	470 pF / Y1 TDK CD series	680pF / Y1 TDK CD series	398 $\mu$ H TCK-177
Model	C1	C2, C3, C5	C4	C6, C7	C8	L1
TEN 40-48xxE TEN 40-48xxWIE	220 $\mu$ F / 100 V Al Cap. (lie down) Chemi-con KY	2.2 $\mu$ F / 100 V 1210 MLCC	100 $\mu$ F / 100 V Al Cap. (lie down) Rubycon ZLH	1000 pF / Y1 TDK CD series	680 pF / Y1 TDK CD series	398 $\mu$ H TCK-177

TCK-177 datasheet: [www.tracopower.com/overview/tck-177](http://www.tracopower.com/overview/tck-177)