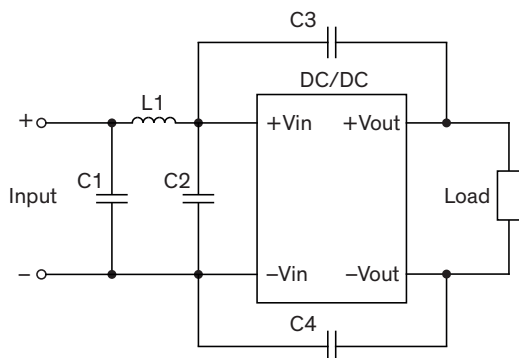


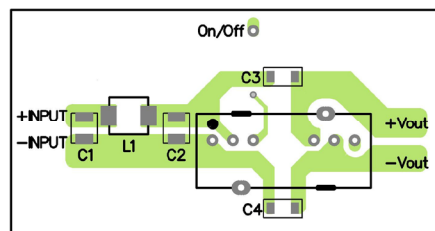
### EMI Consideration

**Suggested filter to comply with EN 55032 Conducted and Radiated Emissions Class A limits**

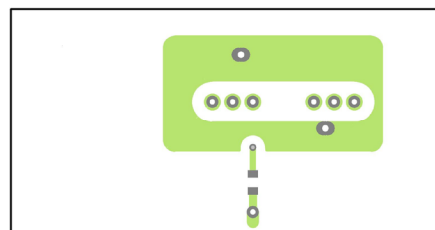
#### Single output models



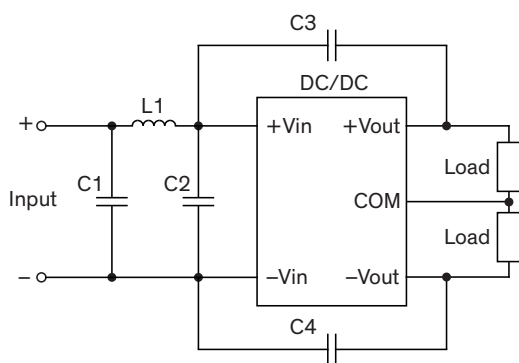
Top view



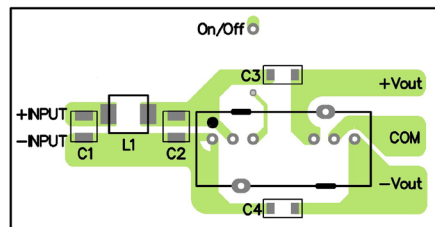
Bottom view



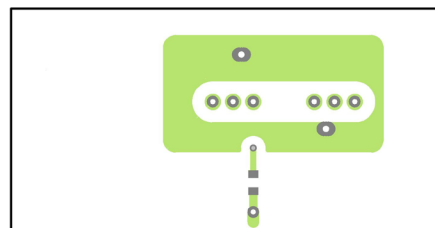
#### Dual output models



Top view



Bottom view



### Suggested components to comply with EN 55032 Conducted and Radiated Emissions Class A limits

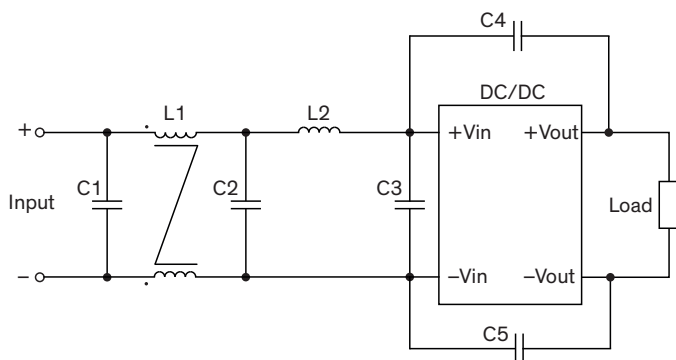
Model	C1	C2	C3, C4	L1
<b>TMR 9-12xx</b>	10 $\mu$ F / 50 V 1210 MLCC	-	1000 pF / 2 kV 1206 MLCC	3.3 $\mu$ H TCK-108
<b>TMR 9-241x</b> <b>TMR 9-481x</b>	4.7 $\mu$ F / 100 V 1210 MLCC	4.7 $\mu$ F / 100 V 1210 MLCC	680 pF / 2 kV 1206 MLCC	10 $\mu$ H TCK-116
<b>TMR 9-242x</b> <b>TMR 9-482x</b>	4.7 $\mu$ F / 100 V 1210 MLCC	4.7 $\mu$ F / 100 V 1210 MLCC	1000 pF / 2 kV 1206 MLCC	10 $\mu$ H TCK-116

TCK-108 datasheet: [www.tracopower.com/overview/tck-108](http://www.tracopower.com/overview/tck-108)

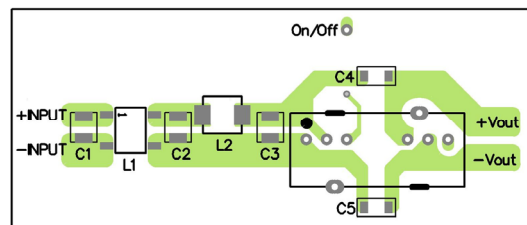
TCK-116 datasheet: [www.tracopower.com/overview/tck-116](http://www.tracopower.com/overview/tck-116)

### Suggested filter to comply with EN 55032 Conducted and Radiated Emissions Class B limits

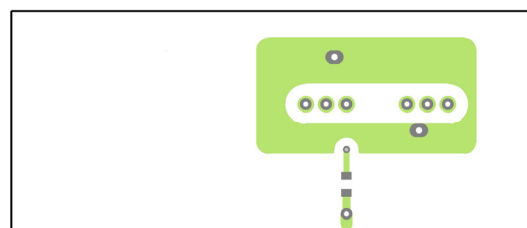
#### Single output models



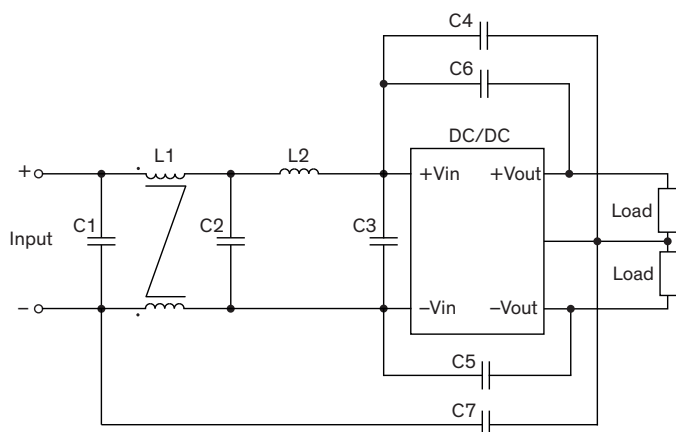
Top view



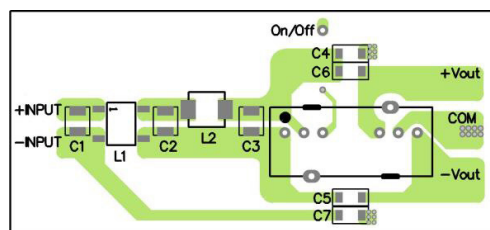
Bottom view



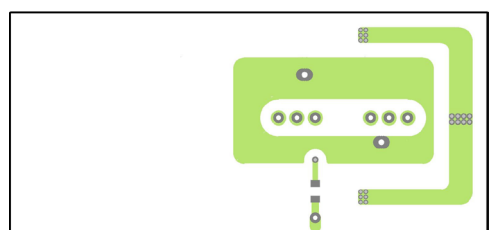
#### Dual output models



Top view



Bottom view



### Suggested components to comply with EN 55032 Conducted and Radiated Emissions Class B limits

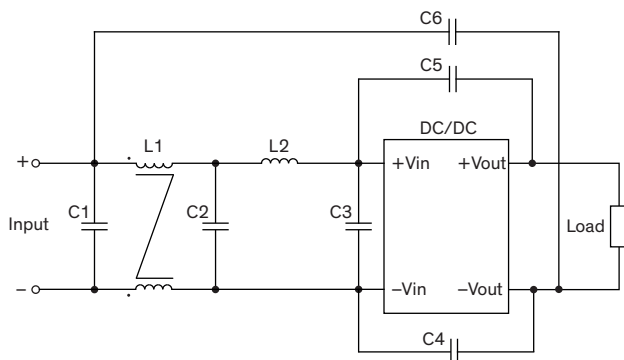
Model	C1, C2, C3	C4, C5	C6	C7	L1	L2
TMR 9-121x	10 $\mu$ F / 50 V 1210 MLCC	220 pF / 2 kV 1206 MLCC	-	-	16.1 $\mu$ H TCK-138	10 $\mu$ H TCK-116
TMR 9-122x	10 $\mu$ F / 100 V 1210 MLCC	220 pF / 2 kV 1206 MLCC	150 pF / 2 kV 1206 MLCC	1000 pF / 2 kV 1206 MLCC	16.1 $\mu$ H TCK-138	10 $\mu$ H TCK-116

TCK-116 datasheet: [www.tracopower.com/overview/tck-116](http://www.tracopower.com/overview/tck-116)

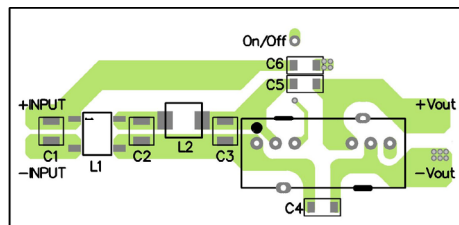
TCK-138 datasheet: [www.tracopower.com/overview/tck-138](http://www.tracopower.com/overview/tck-138)

### Suggested filter to comply with EN 55032 Conducted and Radiated Emissions Class B limits

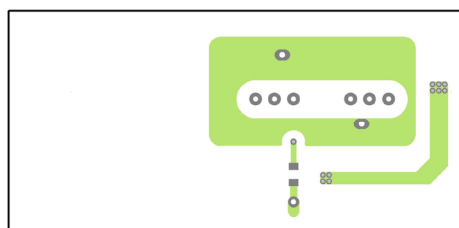
#### Single output models



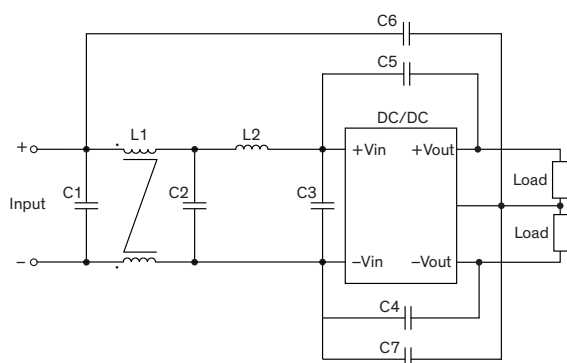
Top view



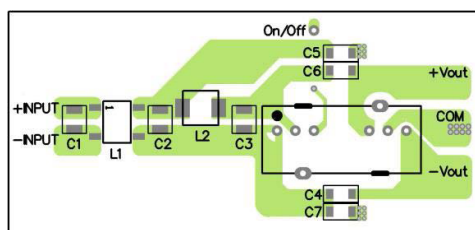
Bottom view



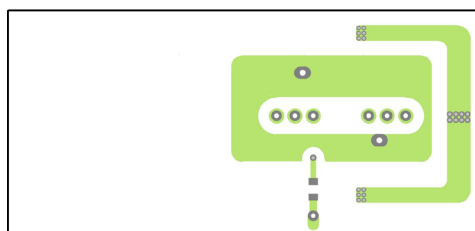
#### Dual output models



Top view



Bottom view



### Suggested components to comply with EN 55032 Conducted and Radiated Emissions Class B limits

Model	C1, C2, C3	C4	C5	C6	C7	L1	L2
TMR 9-241x	4.7 $\mu$ F / 100 V	1000 pF / 2 kV	1000 pF / 2 kV	220 pF / 2 kV	-	137.5 $\mu$ H	10 $\mu$ H
TMR 9-481x	1210 MLCC	1206 MLCC	1206 MLCC	1206 MLCC	-	TCK-140	TCK-116
TMR 9-242x	4.7 $\mu$ F / 100 V	1000 pF / 2 kV	150 pF / 2 kV	1000 pF / 2 kV	150 pF / 2 kV	137.5 $\mu$ H	10 $\mu$ H
TMR 9-482x	1210 MLCC	1206 MLCC	1206 MLCC	1206 MLCC	1206 MLCC	TCK-140	TCK-116

TCK-116 datasheet: [www.tracopower.com/overview/tck-116](http://www.tracopower.com/overview/tck-116)

TCK-140 datasheet: [www.tracopower.com/overview/tck-140](http://www.tracopower.com/overview/tck-140)