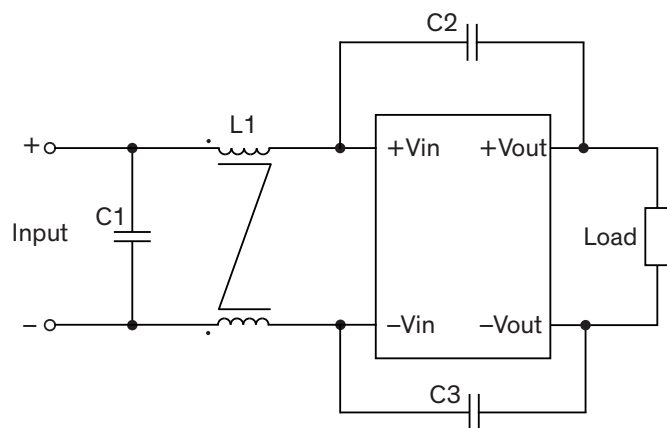


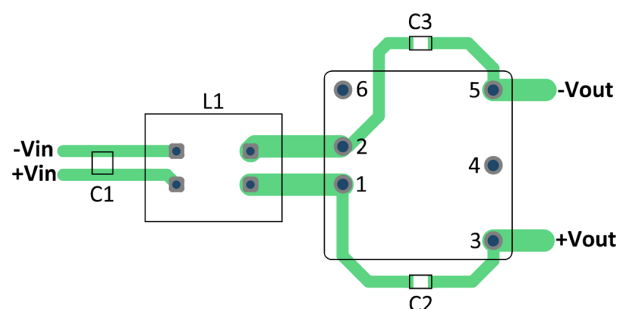
### EMI Consideration

**Suggested filter to comply with EN 55032 Conducted and Radiated Emissions Class A limits**

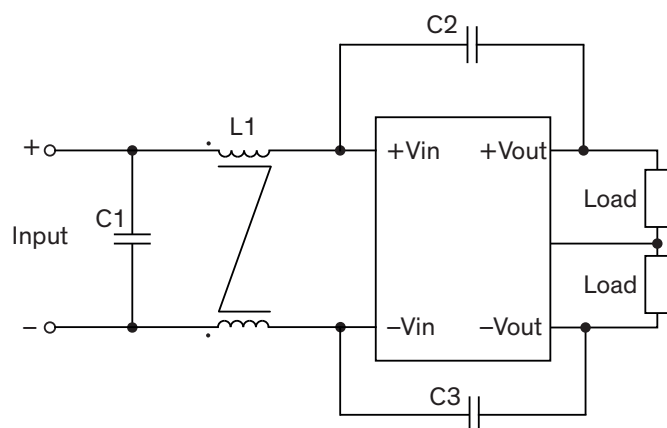
#### Single output models



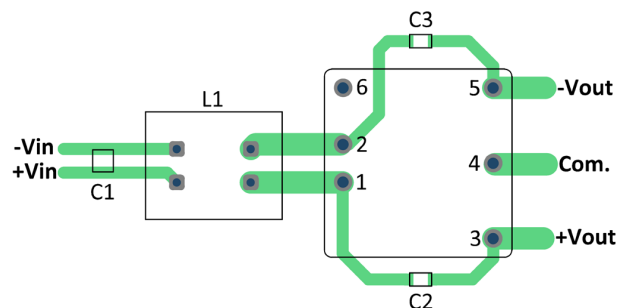
#### Layout suggestion Top View



#### Dual output models



#### Layout suggestion Top View



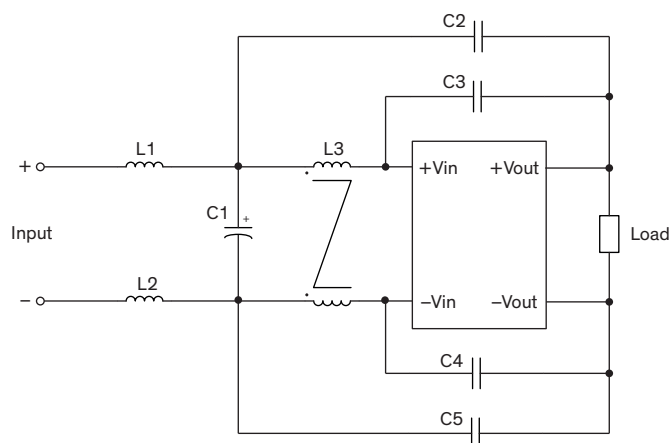
### Suggested components to comply with EN 55032 Conducted and Radiated Emissions Class A limits

Model	C1	L1	C2, C3
THL 25-xxxx	3.3 $\mu$ F / 100 V	0.4 mH / 4.5 A	1000 pF / 2 kV
THL 25-xxxxWI	1210 X7S	7448014501	1206 X7R

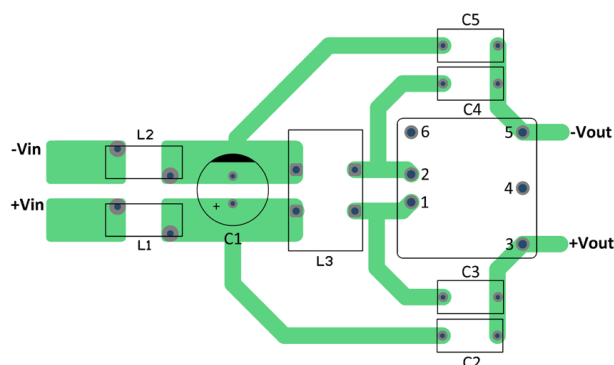
### EMI Consideration

**Suggested filter to comply with EN 55032 Conducted and Radiated Emissions Class B limits**

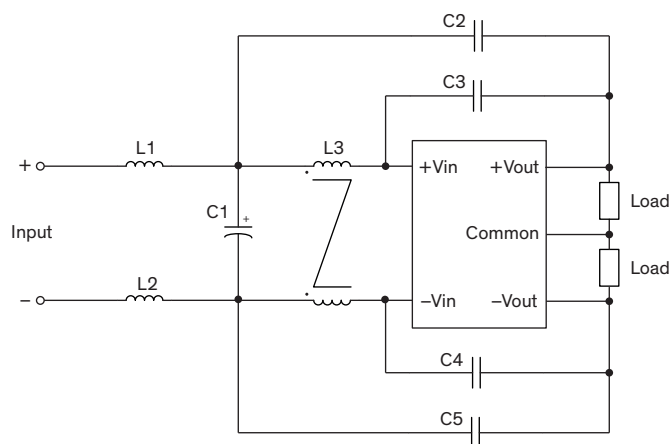
#### Single output models



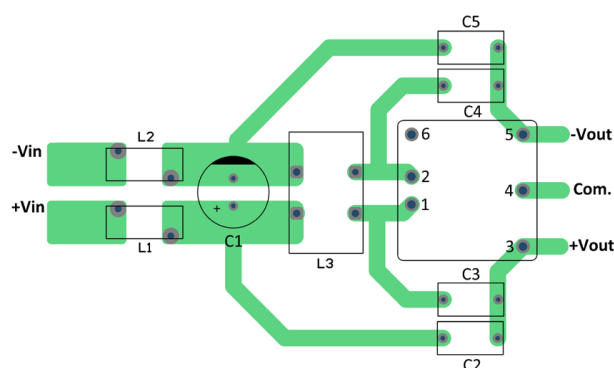
#### Layout suggestion Top View



#### Dual output models



#### Layout suggestion Top View



### Suggested components to comply with EN 55032 Conducted and Radiated Emissions Class B limits

Model	L1, L2	C1	L3	C2, C3, C4, C5
THL 25-xxxx THL 25-xxxxWI	2 $\mu$ H / 7 A 7847111020	330 $\mu$ F / 100 V CHEMI-CON KYA series	9 mH / 5 A 7448030509	2'200 pF Y1 capacitor