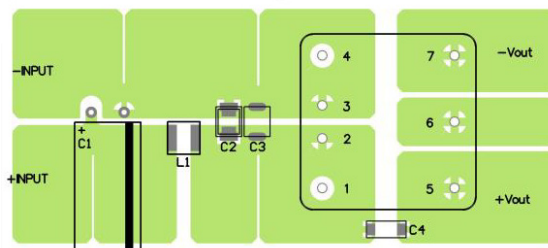
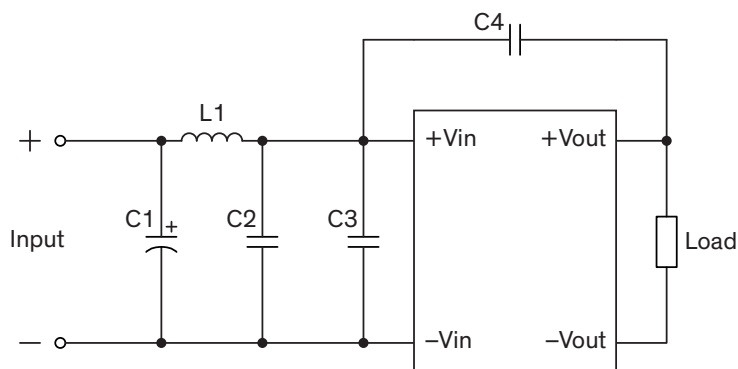


EMI Consideration

Suggested filter to comply with EN 55032 Conducted and Radiated Emissions Class A limits

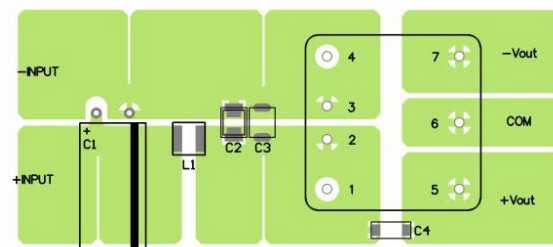
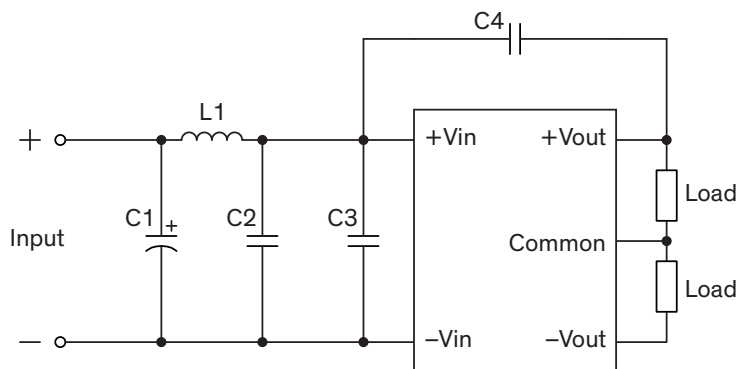
Single output models

PCB layout suggestion



Dual output models

PCB layout suggestion



Suggested components to comply with EN 55032 Conducted and Radiated Emissions Class A limits

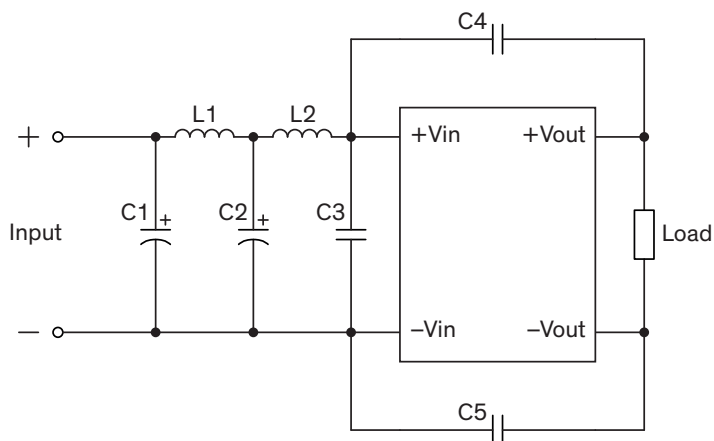
Model	C1	C2	C3	C4	L1
THN 10-36xxUIR	22 μ F / 100 V / KY Al Cap. (lie down)	4.7 μ F / 100 V 1210 MLCC	-	220 pF / 3 kV 1808 MLCC	22 μ H TCK-188
THN 10-72xxUIR	150 μ F / 200 V / KXJ Al Cap. (lie down)	1 μ F / 250 V 1812 MLCC	1 μ F / 250 V 1812 MLCC		47 μ H TCK-170

TCK-170 datasheet: www.tracopower.com/overview/tck-170

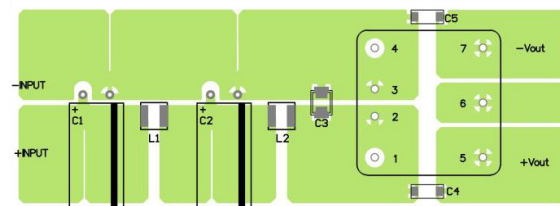
TCK-188 datasheet: www.tracopower.com/overview/tck-188

Suggested filter to comply with EN 55032 Conducted and Radiated Emissions Class B limits

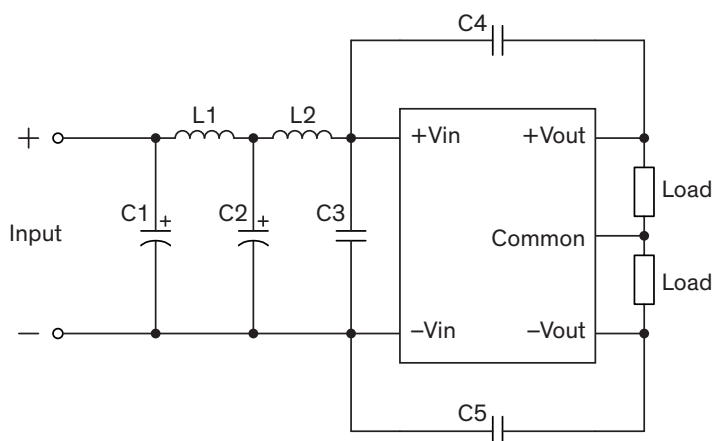
Single output models



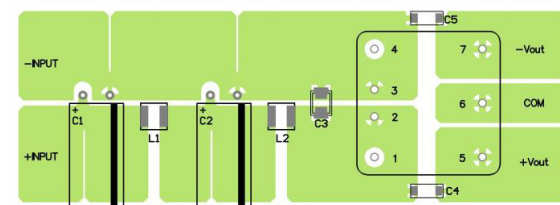
PCB layout suggestion



Dual output models



PCB layout suggestion



Suggested components to comply with EN 55032 Conducted and Radiated Emissions Class B limits

Model	C1, C2	C3	C4	C5	L1	L2
THN 10-36xxUIR	22 μ F / 100 V / KY Al Cap. (lie down)	4.7 μ F / 100 V 1210 MLCC	680 pF / 3 kV 1808 MLCC	680 pF / 3 kV 1808 MLCC	22 μ H TCK-188	6.8 μ H TCK-178
THN 10-72xxUIR	47 μ F / 200 V / KXJ Al Cap. (lie down)	1 μ F / 250 V 1812 MLCC	2'200 pF / 3 kV 1808 MLCC	1'000 pF / 3 kV 1808 MLCC	47 μ H TCK-170	33 μ H TCK-198

TCK-170 datasheet: www.tracopower.com/overview/tck-170

TCK-178 datasheet: www.tracopower.com/overview/tck-178

TCK-188 datasheet: www.tracopower.com/overview/tck-188

TCK-198 datasheet: www.tracopower.com/overview/tck-198