

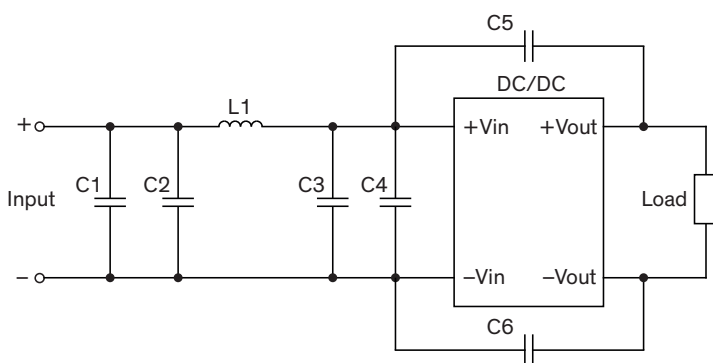
### EMI Consideration

#### Suggested filter to comply with EN 55032 Class A limits

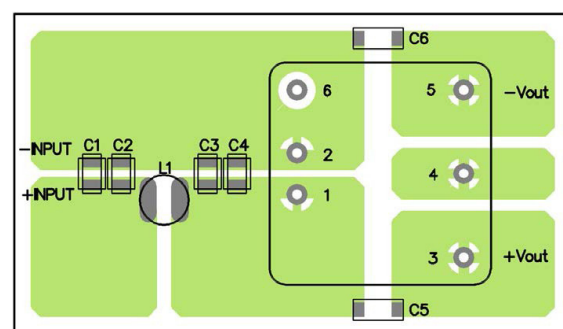
THN 15N series meet EN 55032 Class A without external components.

#### Suggested filter to comply with EN 55032 Class B limits

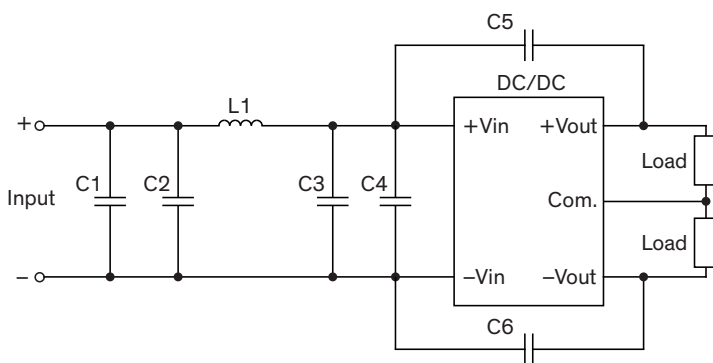
#### Single output models



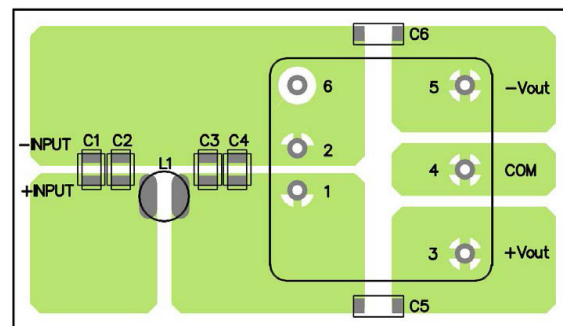
#### PCB layout suggestion



#### Dual output models



#### PCB layout suggestion



#### Suggested components to comply with EN 55032 Class B limits

Model	C1	C2, C3	C4	C5, C6	L1
THN 15-12xxN	N/A	4.7 $\mu$ F / 25 V 1206 MLCC	N/A	680 pF / 3 kV 1808 MLCC	1.1 $\mu$ H, TCK-078
THN 15-24xxN	N/A	4.7 $\mu$ F / 50 V 1206 MLCC	N/A	680 pF / 3 kV 1808 MLCC	1.1 $\mu$ H, TCK-078
THN 15-48xxN	2.2 $\mu$ F / 100 V 1206 MLCC	2.2 $\mu$ F / 100 V 1206 MLCC	N/A	1000 pF / 3 kV 1808 MLCC	10 $\mu$ H, TCK-047

TCK-078 datasheet: [www.tracopower.com/overview/tck-078](http://www.tracopower.com/overview/tck-078)

TCK-047 datasheet: [www.tracopower.com/overview/tck-047](http://www.tracopower.com/overview/tck-047)