

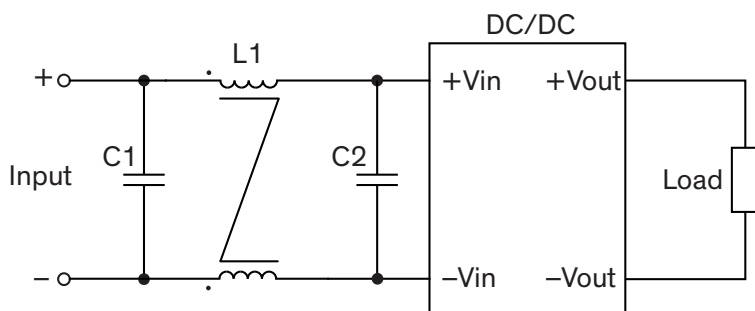
EMI Consideration

Suggested filter to comply with EN 55032 Conducted and Radiated Emissions Class A limits

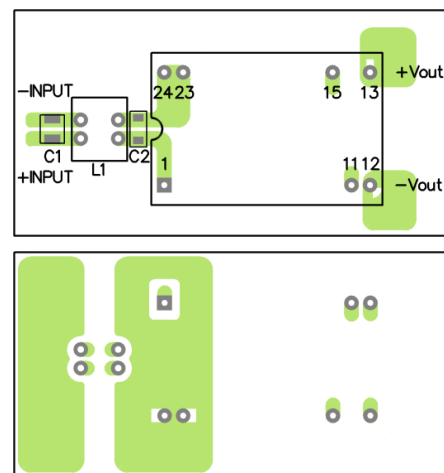
THM 6 Series meet EN 55032 Conducted and Radiated Emissions Class A without external components.

Suggested filter to comply with EN 55032 Conducted and Radiated Emissions Class B limits

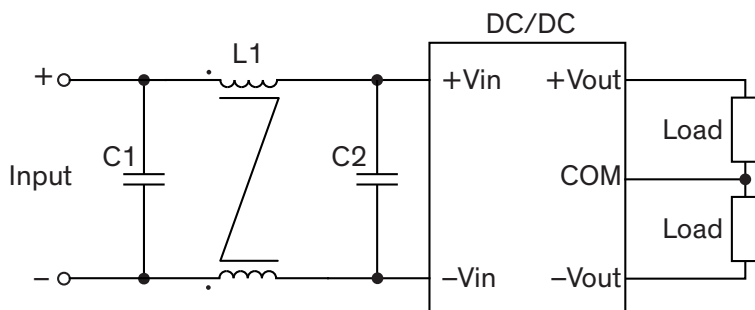
Single output models with standard pinning



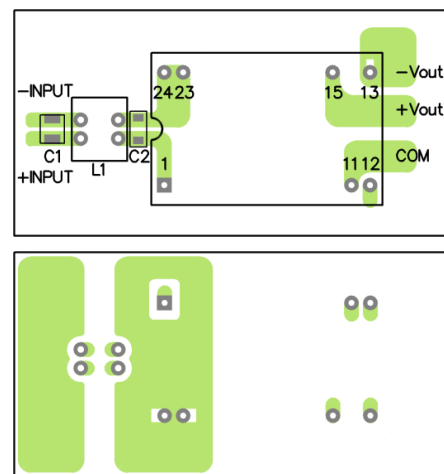
PCB layout suggestion



Dual output models with standard pinning



PCB layout suggestion



Suggested components to comply with EN 55032 Conducted and Radiated Emissions Class B limits

Model	C1	C2	L1
THM 6-05xx	22 μ F / 16 V 1206 MLCC	22 μ F / 16 V 1206 MLCC	137 μ H TCK-127
THM 6-12xx	4.7 μ F / 50 V 1206 MLCC	4.7 μ F / 50 V 1206 MLCC	277 μ H TCK-128
THM 6-24xx	4.7 μ F / 50 V 1206 MLCC	4.7 μ F / 50 V 1206 MLCC	277 μ H TCK-128
THM 6-48xx	2.2 μ F / 100 V 1206 MLCC	1 μ F / 100 V 1206 MLCC	419 μ H TCK-119

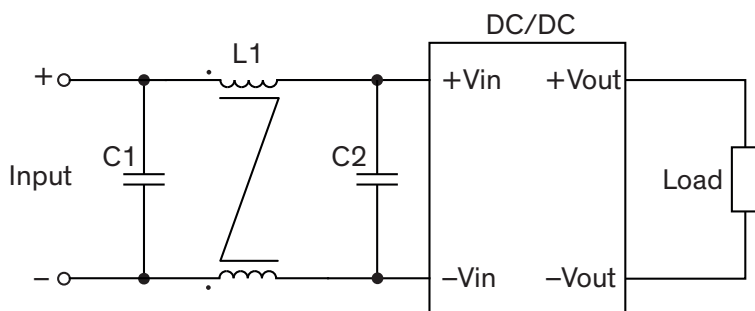
TCK-119 datasheet: www.tracopower.com/overview/tck-119

TCK-127 datasheet: www.tracopower.com/overview/tck-127

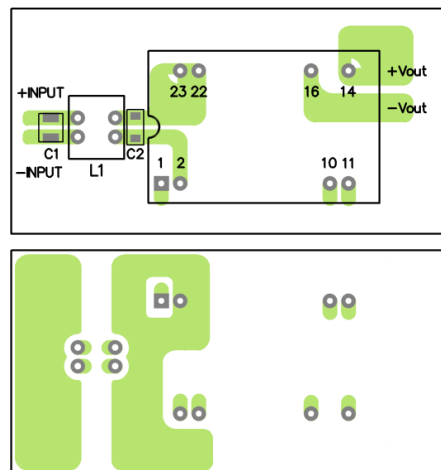
TCK-128 datasheet: www.tracopower.com/overview/tck-128

Suggested filter to comply with EN 55032 Conducted and Radiated Emissions Class B limits

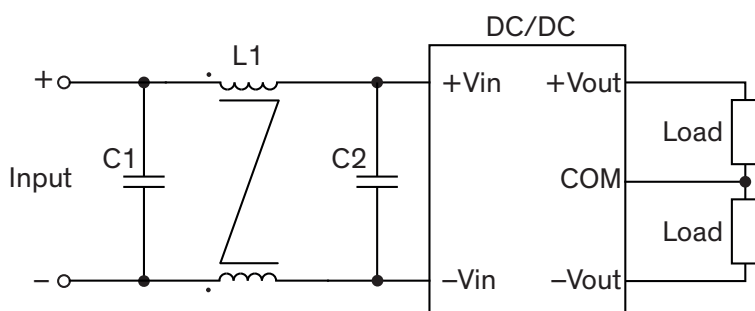
Single output models with optional pinning



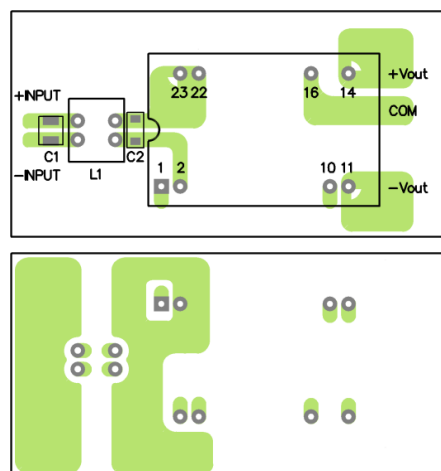
PCB layout suggestion



Dual output models with optional pinning



PCB layout suggestion



Suggested components to comply with EN 55032 Conducted and Radiated Emissions Class B limits

Model	C1	C2	L1
THM 6-05xx	22 μ F / 16 V 1206 MLCC	22 μ F / 16 V 1206 MLCC	137 μ H TCK-127
THM 6-12xx	4.7 μ F / 50 V 1206 MLCC	4.7 μ F / 50 V 1206 MLCC	277 μ H TCK-128
THM 6-24xx	4.7 μ F / 50 V 1206 MLCC	4.7 μ F / 50 V 1206 MLCC	277 μ H TCK-128
THM 6-48xx	2.2 μ F / 100 V 1206 MLCC	1 μ F / 100 V 1206 MLCC	419 μ H TCK-119

TCK-119 datasheet: www.tracopower.com/overview/tck-119

TCK-127 datasheet: www.tracopower.com/overview/tck-127

TCK-128 datasheet: www.tracopower.com/overview/tck-128