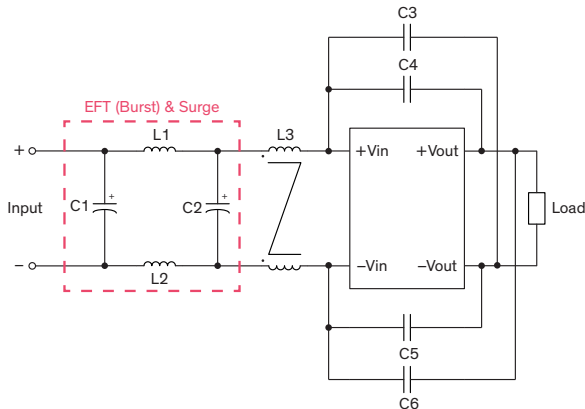


### EMI Consideration

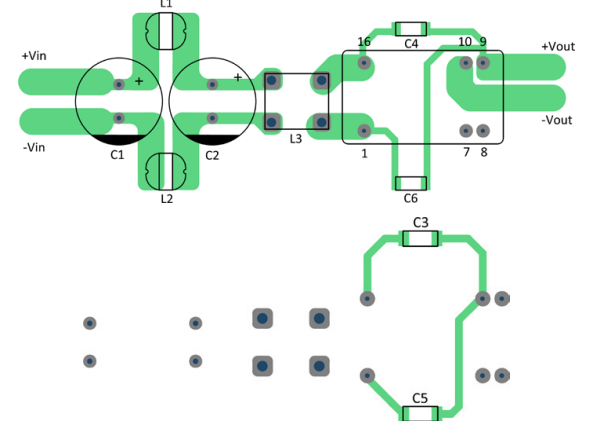
TEL 15N and TEL 15N-HS comply with EN 55032 Conducted Class A limits without external filter

**Suggested filter to comply with EN 55032 Radiated Emissions Class A, EFT & Surge**

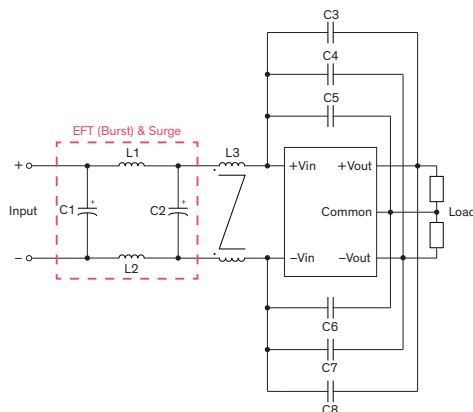
#### Single output models



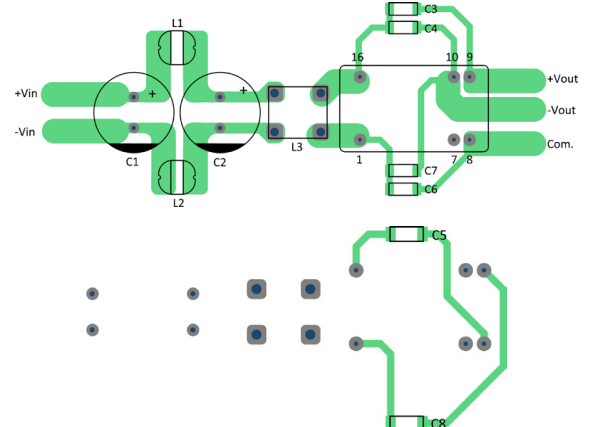
#### PCB layout suggestion (top/bottom)



#### Dual output models



#### PCB layout suggestion (top/bottom)

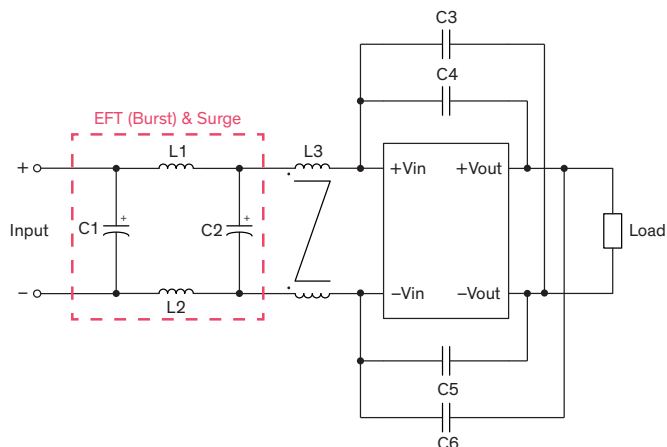


### Suggested components to comply with EN 55032 Radiated Emissions Class A, EFT & Surge

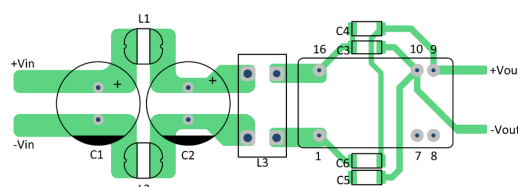
Model	C1, C2	L1, L2	L3	C3	C4	C5	C6	C7	C8				
TEL 15-121xN TEL 15-121xN-HS	820 μF 25 V KY	10 μH 2.2 A 78 mΩ 74477410	-	-	1000 pF 2 kV 1808 X7R	1000 pF 2 kV 1808 X7R	-	-	-				
TEL 15-122xN TEL 12-122xN-HS						680 pF 2 kV 1808 X7R	680 pF 2 kV 1808 X7R		1000 pF 2 kV 1808 X7R				
TEL 15-241xN TEL 15-241xN-HS	470 μF 50 V KY					1000 pF 2 kV 1808 X7R	-		-				
TEL 15-2422N TEL 15-2422N-HS					1000 pF 2 kV 1808 X7R				1000 pF 2 kV 1808 X7R				
TEI 15-2423N TEL 15-2423N-HS													
TEL 15-481xN TEL 15-481xN-HS	220 μF 100 V KY		30 μH 1.4 A 60 mΩ 744273222	1000 pF 2 kV 1808 X7R	680 pF 2 kV 1808 X7R	1000 pF 2 kV 1808 X7R	680 pF 2 kV 1808 X7R	-					
TEL 15-482xN TEL 15-482xN-HS				1500 pF 2 kV 1808 X7R	1500 pF 2kV 1808 X7R	1800 pF 2 kV 1808 X7R	1800 pF 2 kV 1808 X7R	1500 pF 2 kV 1808 X7R	1500 pF 2 kV 1808 X7R				

### Suggested filter to comply with EN 55032 Conducted and Radiated Emissions Class B, EFT & Surge

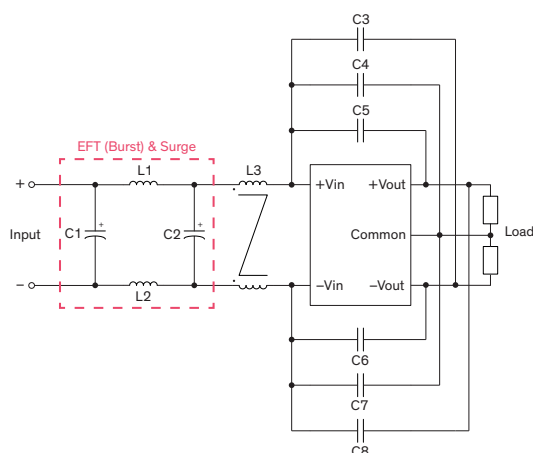
#### Single output models



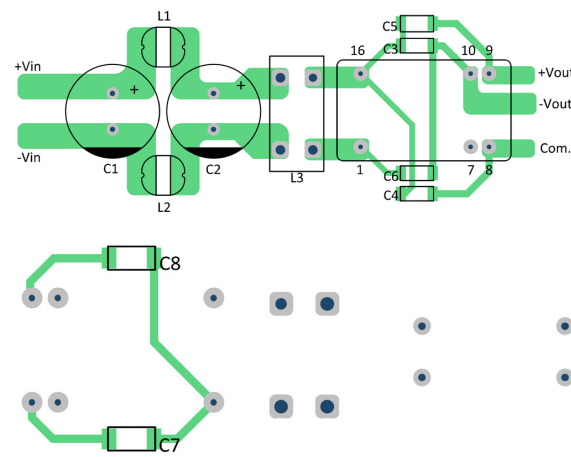
#### PCB layout suggestion



#### Dual output models



#### PCB layout suggestion (top/bottom)



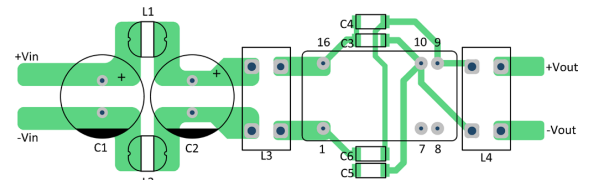
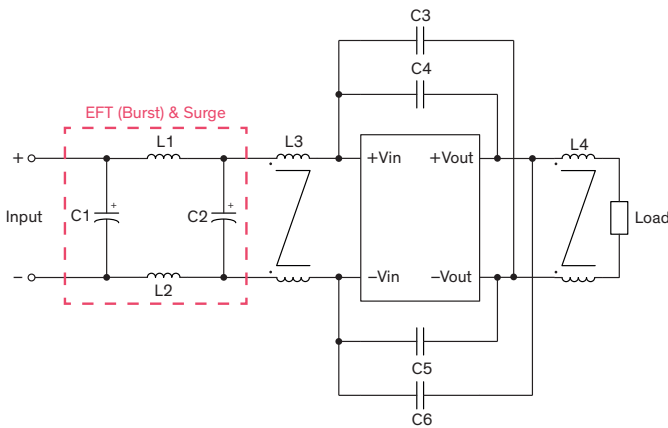
### Suggested components to comply with EN 55032 Conducted and Radiated Emissions Class B, EFT & Surge

Model	C1, C2	L1, L2	L3	C3	C4	C5	C6	C7	C8
TEL 15-121xN TEL 15-121xN-HS	820 $\mu$ F 25 V KY	10 $\mu$ H 2.2 A 78 m $\Omega$ 74477410	14 $\mu$ H 4 A 15 m $\Omega$ 744841414	680 pF 2 kV 1808 X7R	470 pF 2 kV 1808 X7R	680 pF 2 kV 1808 X7R	680 pF 2 kV 1808 X7R	-	-
TEL 15-122xN TEL 15-122xN-HS				1200 pF 2 kV 1808 X7R	1200 pF 2 kV 1808 X7R			470 pF 2 kV 1808 X7R	470 pF 2 kV 1808 X7R
TEL 15-241xN TEL 15-241xN-HS	470 $\mu$ F 50 V KY			330 pF 2 kV 1808 X7R	1000 pF 2 kV 1808 X7R	1000 pF 2 kV 1808 X7R	1000 pF 2 kV 1808 X7R	-	-
TEL 15-242xN TEL 15-242xN-HS				-	1000 pF 2 kV 1808 X7R			1000 pF 2 kV 1808 X7R	1000 pF 2 kV 1808 X7R

### Suggested filter to comply with EN 55032 Conducted and Radiated Emissions Class B, EFT & Surge (continued)

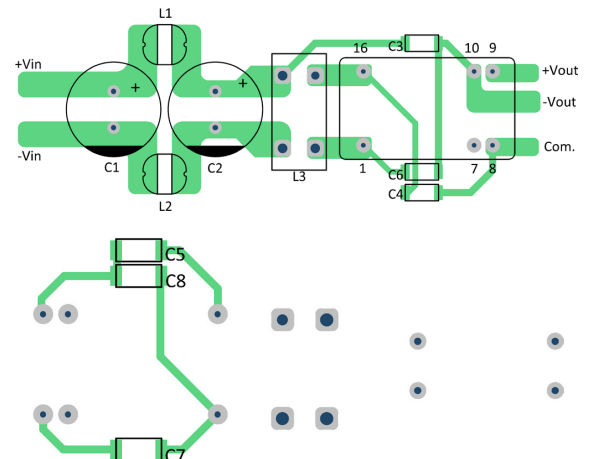
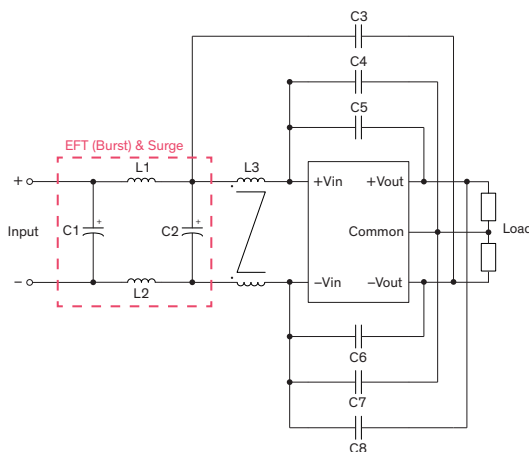
#### Single output models

#### PCB layout suggestion



#### Dual output models

#### PCB layout suggestion (top/bottom)



### Suggested components to comply with EN 55032 Conducted and Radiated Emissions Class B, EFT & Surge

Model	C1, C2	L1, L2	L3	C3	C4	C5	C6	C7	C8	L4
TEL 15-4811N TEL 15-4811N-HS	220 $\mu$ F 100 V KY	15 $\mu$ H 1.53 A 89 m $\Omega$ 744774115	810- ACM121110 22PLTL1	1000 pF 2 kV 1808 X7R	680 pF 2 kV 1808 X7R	1500 pF 2 kV 1808 X7R	1000 pF 2 kV 1808 X7R	-	-	-
TEL 15-4812N TEL15-4812N-HS TEL 15-4813N TEL 15-4813N-HS TEL 15-4815N TEL 15-4815N-HS		10 $\mu$ H 2.2 A 78 m $\Omega$ 74477410	30 $\mu$ H 1.4A 60 m $\Omega$ 744273222	-		680 pF 2 kV 1808 X7R	-			30 $\mu$ H 1.4A 60 m $\Omega$ 744273222
TEL 15-482xN TEL 15-482xN-HS				680 pF 2 kV 1808 X7R	1000 pF 2 kV 1808 X7R	2200 pF 2 kV 1808 X7R	1500 pF 2 kV 1808 X7R	1200 pF 2 kV 1808 X7R	1500 pF 2 kV 1808 X7R	-