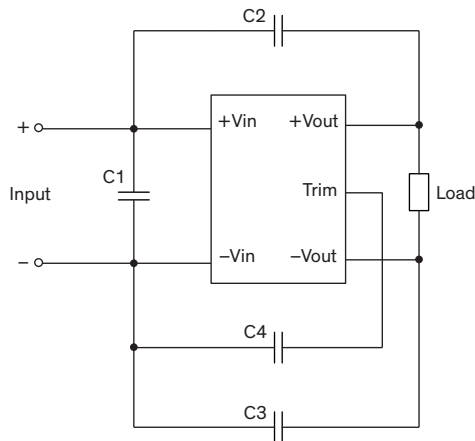


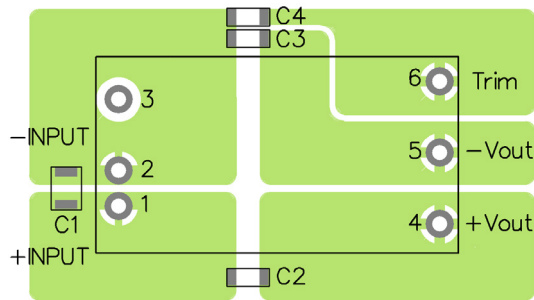
EMI Consideration

Suggested filter to comply with EN 55032 Conducted and Radiated Emissions Class A limits

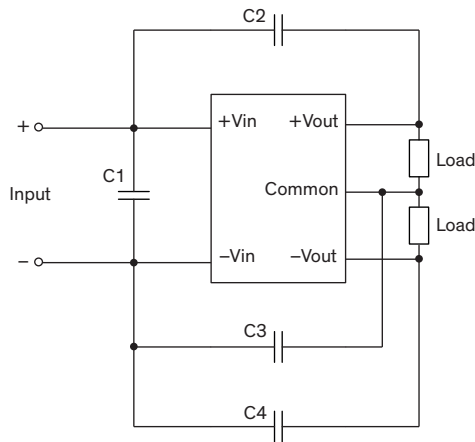
Single output models



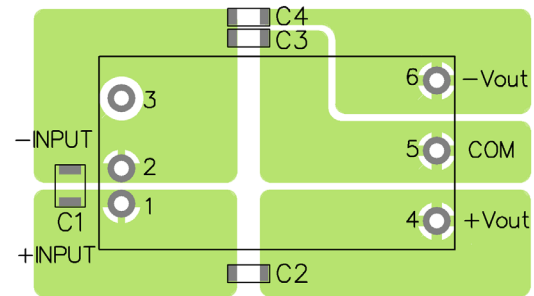
Layout suggestion Top View



Dual output models



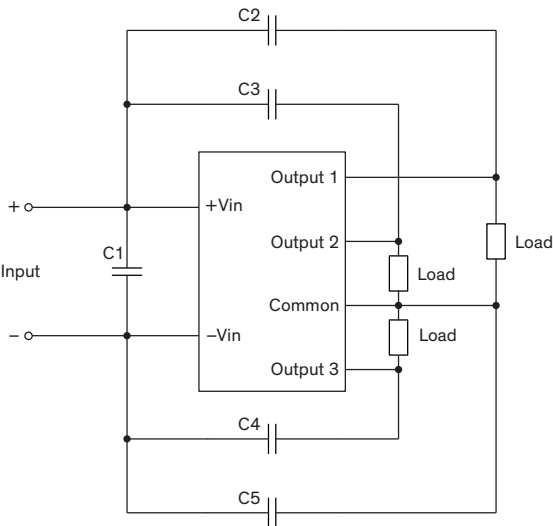
Layout suggestion Top View



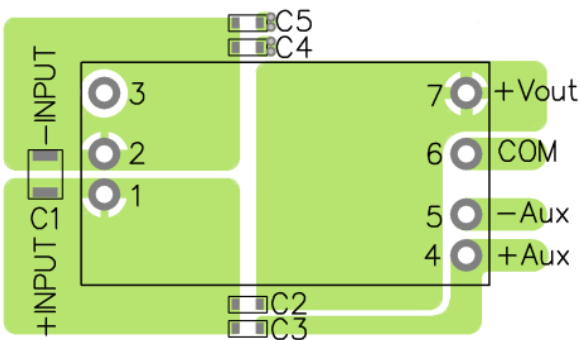
Suggested components to comply with EN 55032 Conducted and Radiated Emissions Class A limits		
Model	C1	C2, C3, C4
TEN 30-241xWIN TEN 30-242xWIN	4.7 $\mu$ F / 50 V / 1812 MLCC	1000 pF / 2kV / 1808 MLCC
TEN 30-481xWIN TEN 30-482xWIN	2.2 $\mu$ F / 100 V / 1812 MLCC	

Suggested filter to comply with EN 55032 Conducted and Radiated Emissions Class A limits

Tripple output models



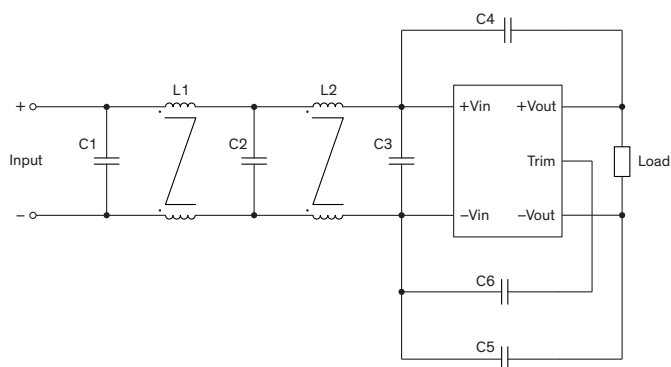
Layout suggestion Top View



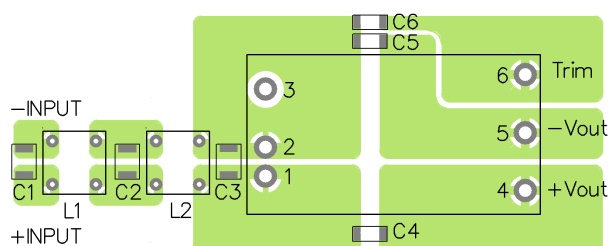
Suggested components to comply with EN 55032 Conducted and Radiated Emissions Class A limits			
Model	C1	C2, C3, C5	C4
TEN 30-243xWIN	4.7 $\mu$ F / 50 V / 1812 MLCC	150 pF / 2 kV / 1206 MLCC	1'000 pF / 3 kV / 1808 MLCC
TEN 30-483xWIN	2. 2 $\mu$ F / 100 V / 1812 MLCC		

### Suggested filter to comply with EN 55032 Conducted and Radiated Emissions Class B limits

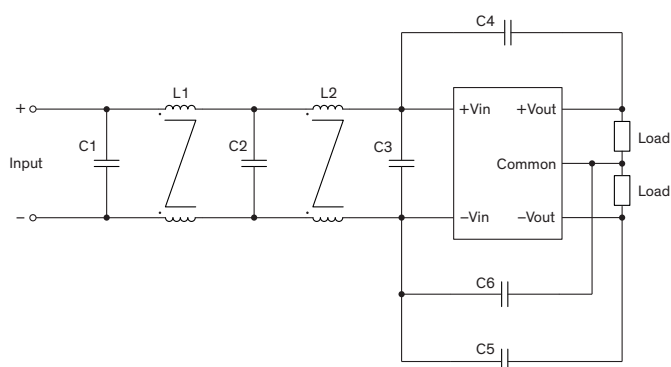
#### Single output models



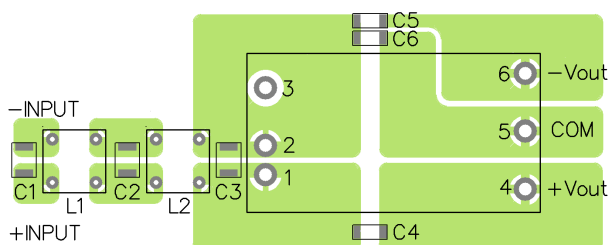
#### Layout suggestion Top View



#### Dual output models



#### Layout suggestion Top View



### Suggested components to comply with EN 55032 Conducted and Radiated Emissions Class B limits

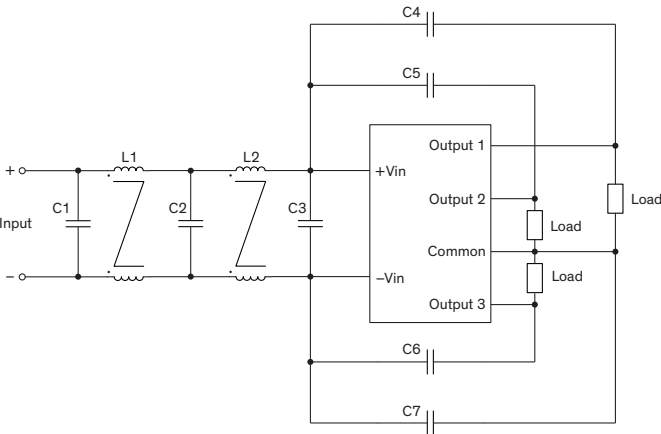
Model	C1, C2, C3	C4, C5, C6	L1	L2
TEN 30-241xWIN TEN 30-242xWIN	4.7 $\mu$ F / 50 V 1812 MLCC	1000 pF / 2 kV 1808 MLCC	33.3 $\mu$ H TCK-075	55 $\mu$ H TCK-076
TEN 30-481xWIN TEN 30-482xWIN	2.2 $\mu$ F / 100 V 1812 MLCC			

TCK-075 datasheet: [www.tracopower.com/overview/tck-075](http://www.tracopower.com/overview/tck-075)

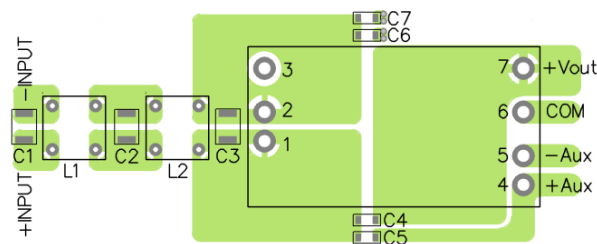
TCK-076 datasheet: [www.tracopower.com/overview/tck-076](http://www.tracopower.com/overview/tck-076)

**Suggested filter to comply with EN 55032 Conducted and Radiated Emissions Class B limits**

**Tripple output models**



**Layout suggestion Top View**



**Suggested components to comply with EN 55032 Conducted and Radiated Emissions Class B limits**

Model	C1, C2, C3	C4, C5, C7	C6	L1	L2
TEN 30-243xWIN	4.7 $\mu$ F / 50 V 1812 MLCC	150 pF / 2 kV 1206 MLCC	1'000 pF / 3 kV 1808 MLCC	450 $\mu$ H TCK-048	145 $\mu$ H TCK-051
TEN 30-483xWIN	2.2 $\mu$ F / 100 V 1812 MLCC				

TCK-048 datasheet: [www.tracopower.com/overview/tck-048](http://www.tracopower.com/overview/tck-048)

TCK-051 datasheet: [www.tracopower.com/overview/tck-051](http://www.tracopower.com/overview/tck-051)