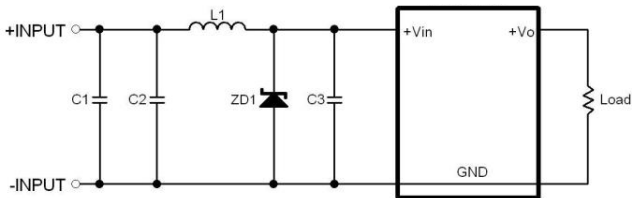


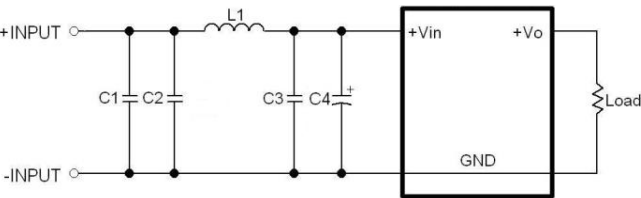
EMI Consideration

Suggested filter to comply with EN 55032 Conducted and Radiated Emissions Class A and Class B limits

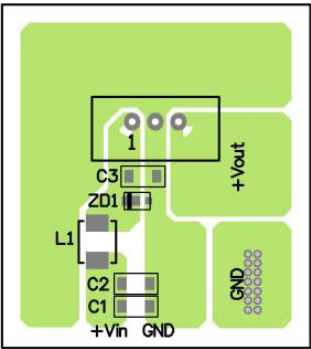
TSR 2-05xx models



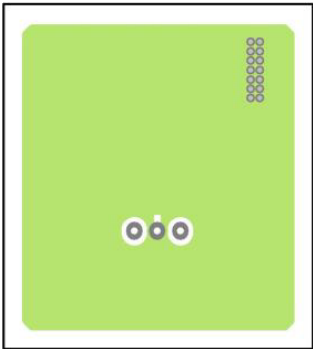
TSR 2-24xxx models



PCB layout suggestion

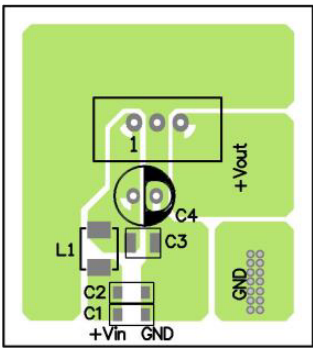


TOP view

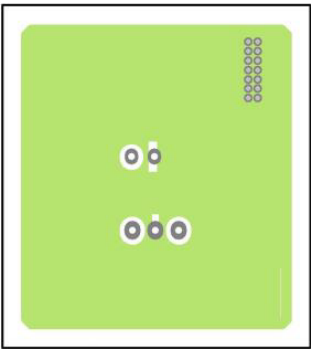


BOTTOM view

PCB layout suggestion



TOP view



BOTTOM view

Suggested components to comply with EN 55032 Conducted and Radiated Emissions Class A and Class B limits				
Model	C1	C2	C3	L1
TSR 2-05xx	-	47 μ F / 6.3 V 1206 MLCC	47 μ F / 6.3 V 1206 MLCC	1 μ H TCK-159
TSR 2-24xxx	10 μ F / 50 V 1206 MLCC	10 μ F / 50 V 1206 MLCC	10 μ F / 50 V 1210 MLCC	5.6 μ H TCK-141

Suggested components for input transient voltage (surge) during start-up		
Model	ZD1	C4
TSR 2-05xx	Zener Diode 6.2 V ROHM, TFZVTR6.2B	-
TSR 2-24xxx	-	56 μ F / 50 V Al Cap. Chemi-con KY

TCK-141 datasheet: www.tracopower.com/overview/tck-141

TCK-159 datasheet: www.tracopower.com/overview/tck-159