

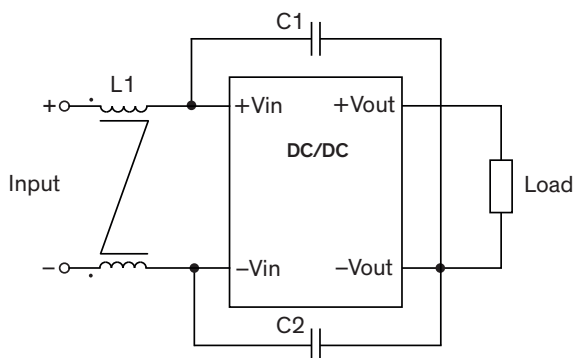
EMI Consideration

Suggested filter to comply with EN 55032 Conducted Emissions Class A limits

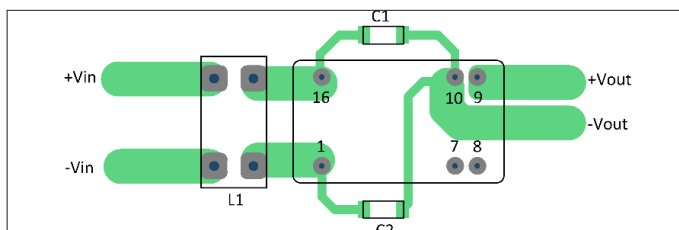
TEL 10 series meet EN 55032 Conducted Emissions Class A without external components.

Suggested filter to comply with EN 55032 Radiated Emissions Class A limits

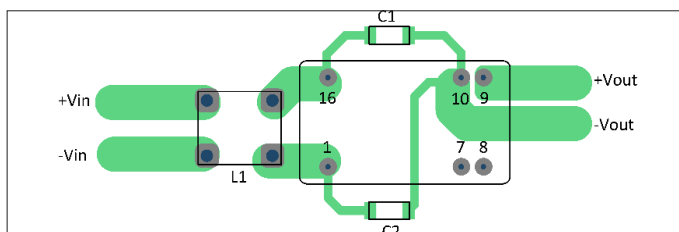
Single output models



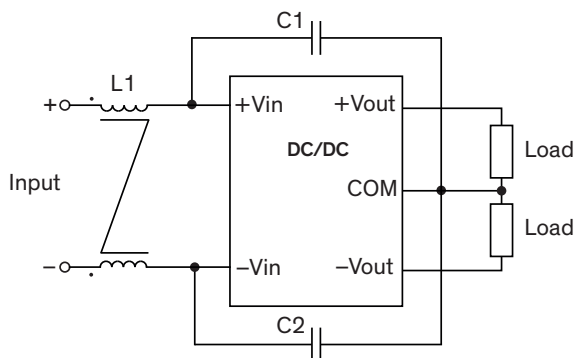
PCB layout suggestion (12 Vin models)



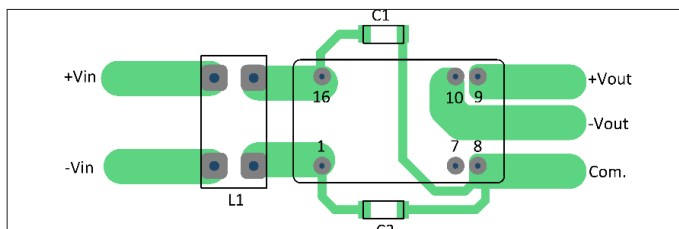
PCB layout suggestion (24 & 48 Vin models)



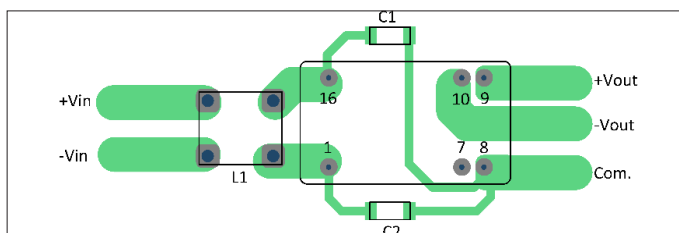
Dual output models



PCB layout suggestion (12 Vin models)



PCB layout suggestion (24 & 48 Vin models)



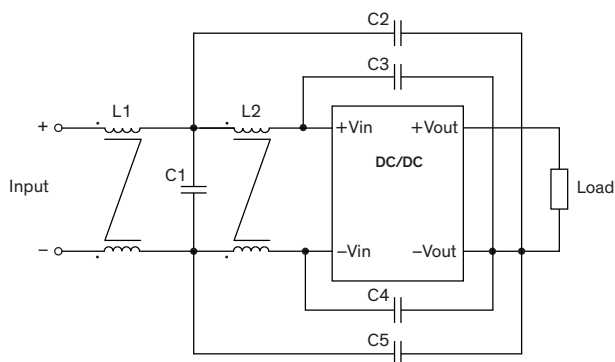
Suggested components to comply with EN 55032 Radiated Emissions Class A limits

Model	L1	C2, C3
TEL 10-12xx	30 μ H / 3 A / 744841330	100 pF / 2 kV / 1808
TEL 10-24xx TEL 10-48xx	30 μ H / 1.4 A / 744273222	100 pF / 2 kV / 1808

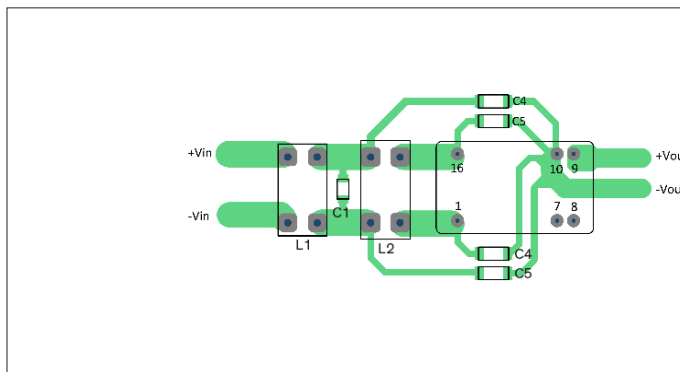
EMI Consideration

Suggested filter to comply with EN 55032 Radiated and Conducted Emissions Class B limits

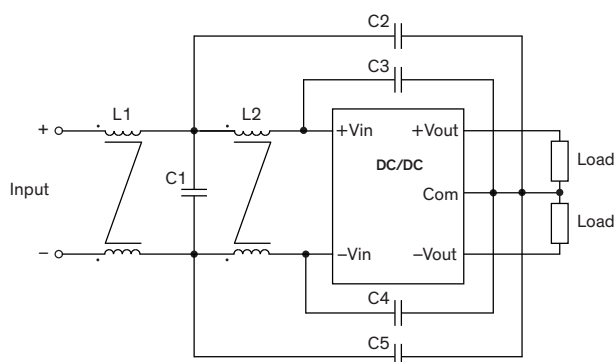
Single output models



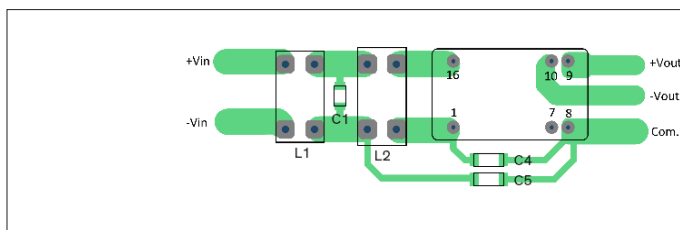
PCB layout suggestion



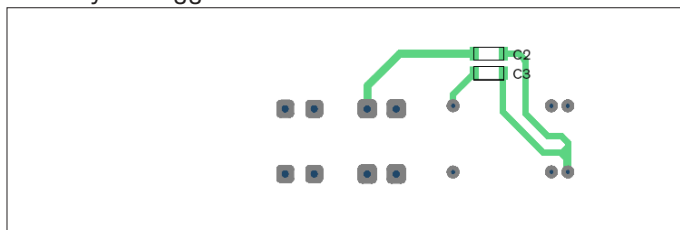
Dual output models



PCB layout suggestion Top



PCB layout suggestion Bottom



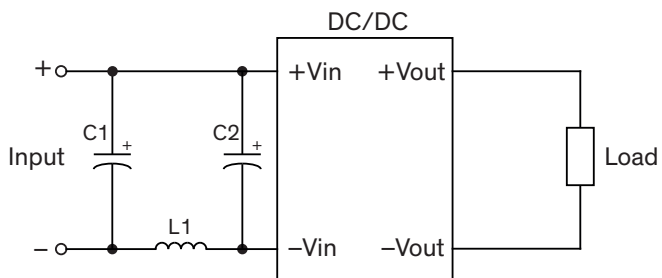
Suggested components to comply with EN 55032 Radiated and Conducted Emissions Class B limits

Model	L1	C1	L2	C2, C5	C3, C4
TEL 10-xxxx	1 mH / 2.5 A 7448012501	2.2 μ F / 100 V 1206	0.4 mH / 4.5 A 7448014501	100 pF / 2 kV / 1808	470 pF / 2 kV / 1808

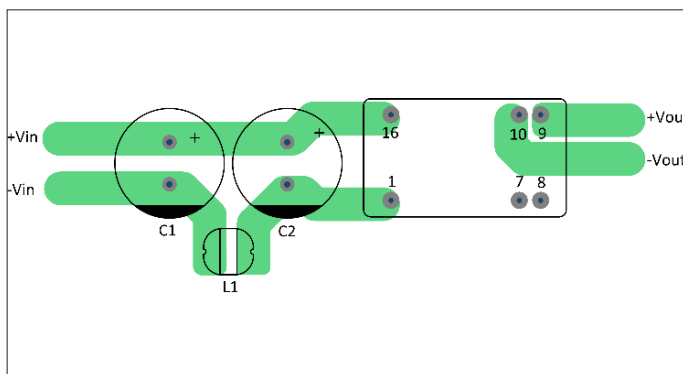
EMS Consideration

Suggested filter to comply with EN 55032 EFT (Burst) & Surge, perf. criteria A

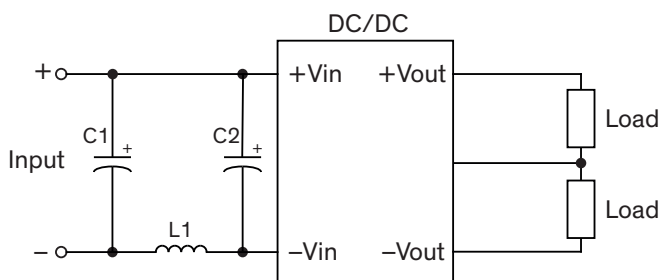
Single output models



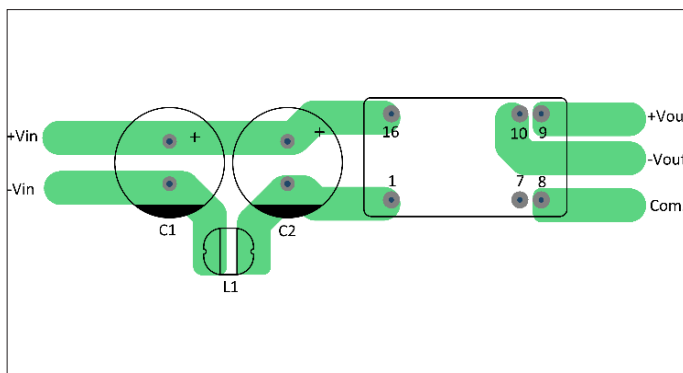
PCB layout suggestion



Dual output models



PCB layout suggestion



Suggested components to comply with EFT (Burst) & Surge, perf. criteria A

Model	C1	L1	C2
TEL 10-12xx TEL 10-24xx	560 μ F / 50 V / KY series	10 μ H / 2.2 A / 74477410	560 μ F / 50 V / KY series
TEL 10-48xx	-	-	560 μ F / 100 V / KY series