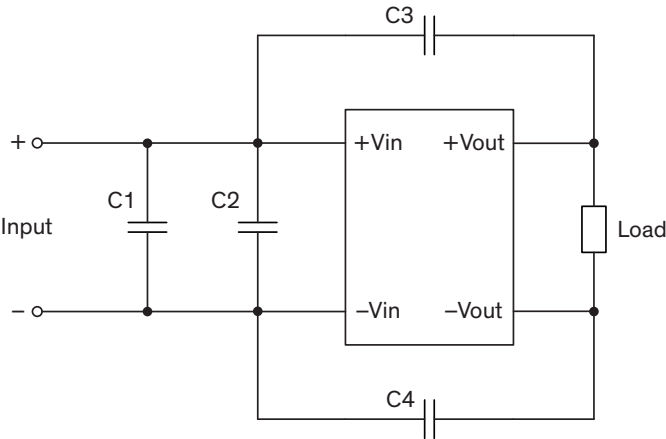


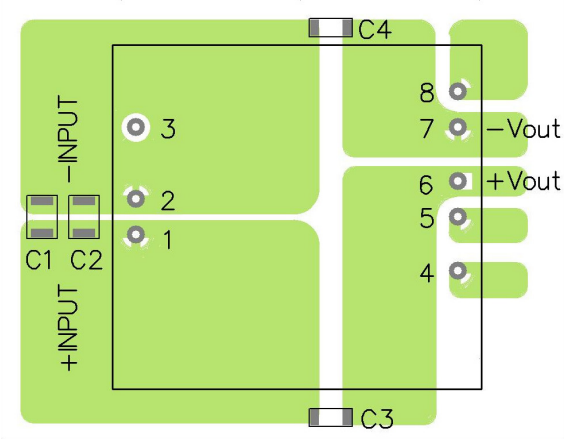
EMI Consideration

Suggested filter to comply with EN 55032 Conducted and Radiated Emissions Class A limits

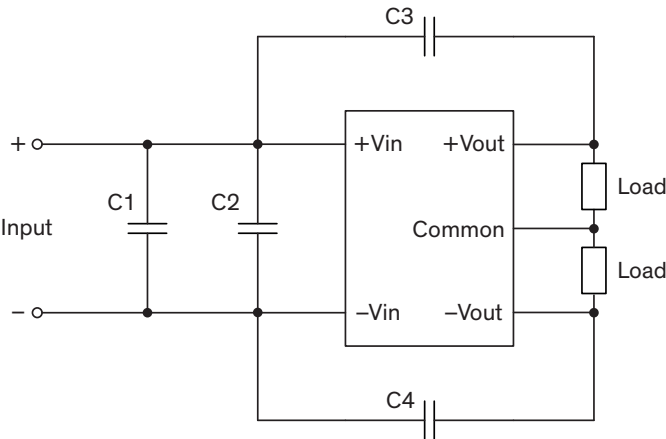
Single output models



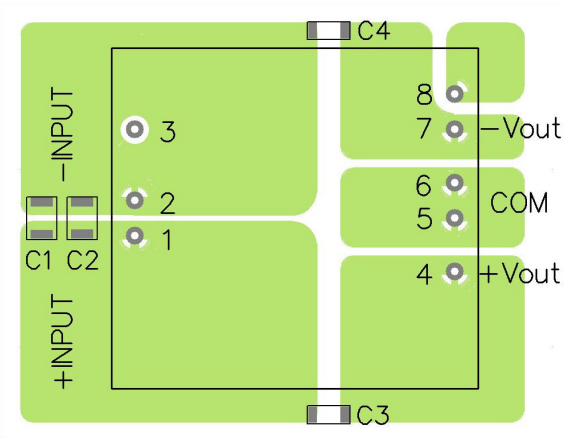
PCB layout suggestion



Dual output models



PCB layout suggestion

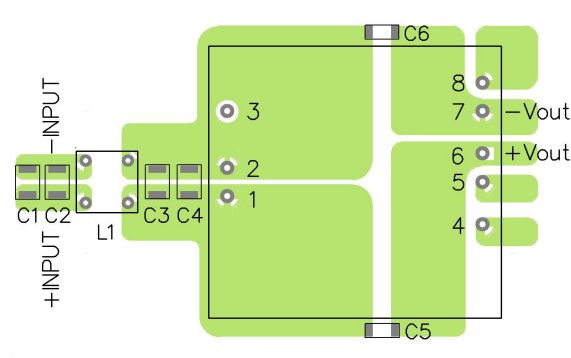
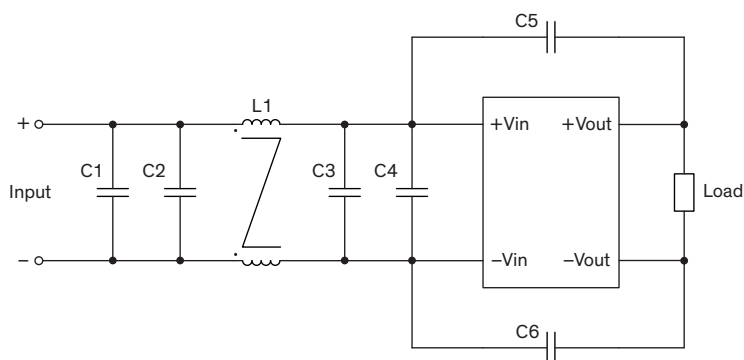


Suggested components to comply with EN 55032 Conducted and Radiated Emissions Class A limits		
Model	C1, C2	C3, C4
TEN 40-24xxWI	-	1'000 pF / 2 kV / 1206 MLCC
TEN 40-48xxWI	2.2 µF / 100 V / 1812 MLCC	

Suggested filter to comply with EN 55032 Conducted and Radiated Emissions Class B limits

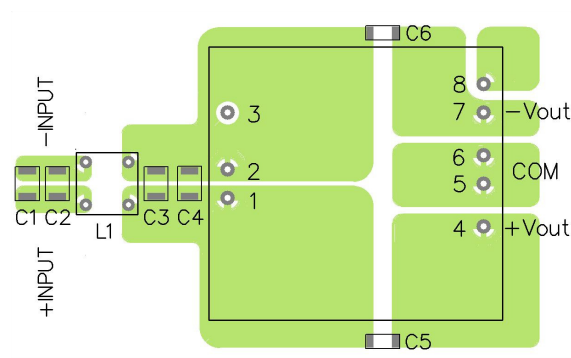
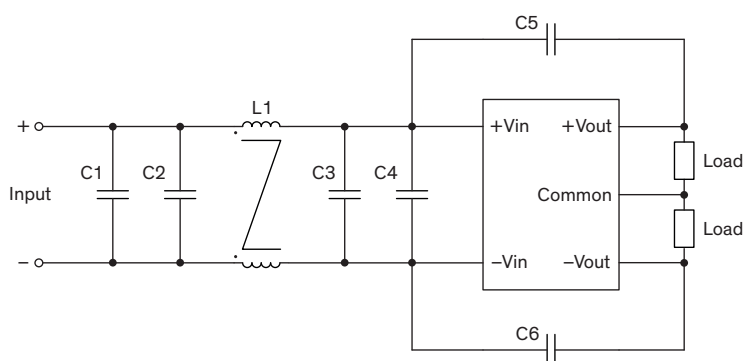
Single output models

PCB layout suggestion



Dual output models

PCB layout suggestion



Suggested components to comply with EN 55032 Conducted and Radiated Emissions Class B limits

Model	C1	C2	C3	C4	C5, C6	L1
TEN 40-24xxWI	4.7 μ F / 50 V 1812 MLCC	-	4.7 μ F / 50 V 1812 MLCC	-	1'000 pF / 2 kV 1206 MLCC	450 μ H / 5.2 A TCK-048
TEN 40-48xxWI	2.2 μ F / 100 V 1812 MLCC	2.2 μ F / 100 V 1812 MLCC	2.2 μ F / 100 V 1812 MLCC	2.2 μ F / 100 V 1812 MLCC		830 μ H / 3.3 A TCK-053

TCK-048 datasheet: www.tracopower.com/overview/tck-048

TCK-053 datasheet: www.tracopower.com/overview/tck-053