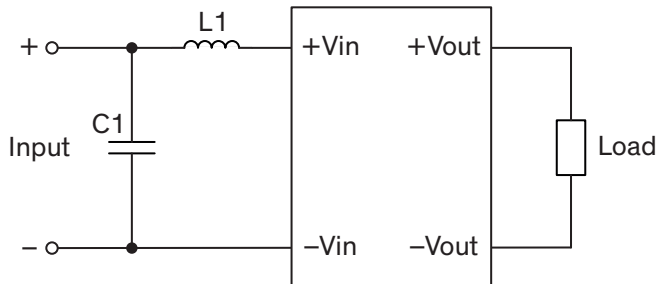


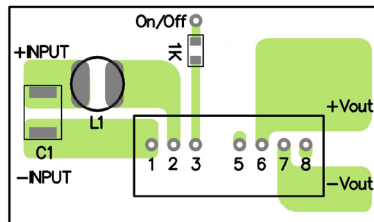
EMI Consideration

Suggested filter to comply with EN 55032 Conducted Emissions Class A limits

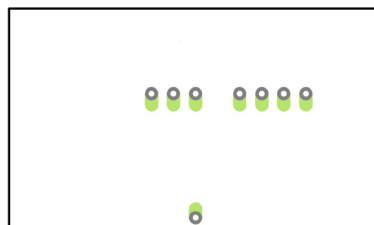
Single output models



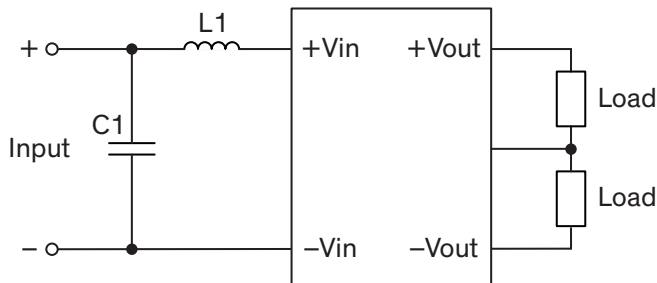
Top view



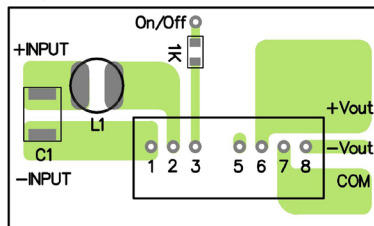
Bottom view



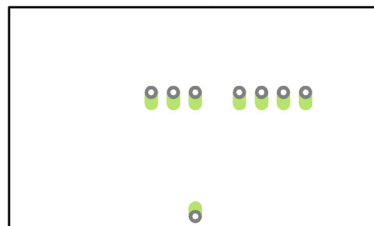
Dual output models



Top view



Bottom view



Suggested components to comply with EN 55032 Conducted Emissions Class A limits

Model	C1	L1
TMR 3-05xx TMR 3-05xxHI	2.2 μ F / 10 V, 1206 MLCC	3.3 μ H / 2.0 A, 0.06 Ohm, SMD Inductor TCK-044
TMR 3-12xx TMR 3-12xxHI	0.68 μ F / 25 V, 1206 MLCC	10 μ H / 1.4 A, 0.1 Ohm, SMD Inductor TCK-047
TMR 3-24xx TMR 3-24xxHI	4.7 μ F / 50 V, 1210 MLCC	10 μ H / 1.4 A, 0.1 Ohm, SMD Inductor TCK-047
TMR 3-48xx TMR 3-48xxHI	0.47 μ F / 100 V, 1812 MLCC	56 μ H / 0.7 A, 0.4 Ohm, SMD Inductor TCK-045

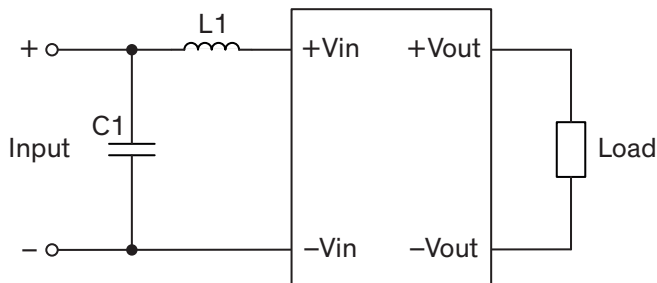
TCK-044 datasheet: www.tracopower.com/overview/tck-044

TCK-047 datasheet: www.tracopower.com/overview/tck-047

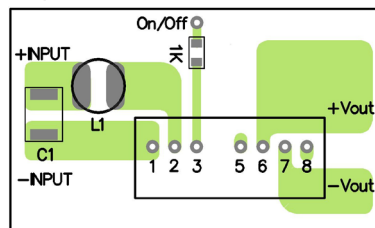
TCK-045 datasheet: www.tracopower.com/overview/tck-045

Suggested filter to comply with EN 55032 Conducted Emissions Class B limits

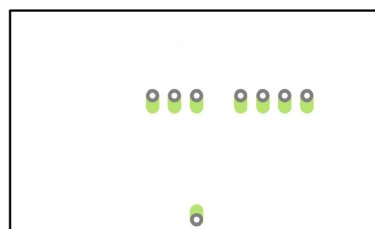
Single output models



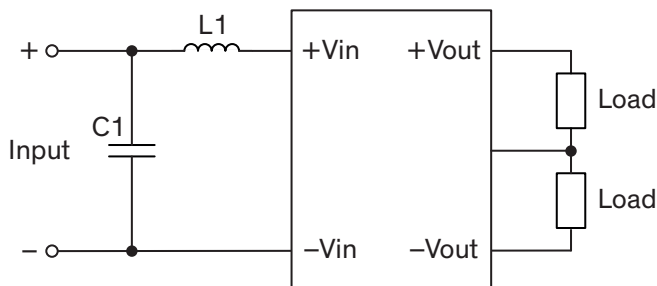
Top view



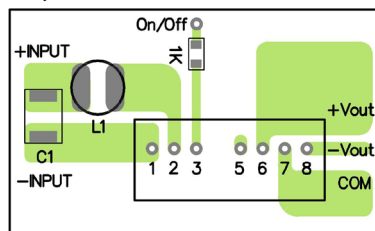
Bottom view



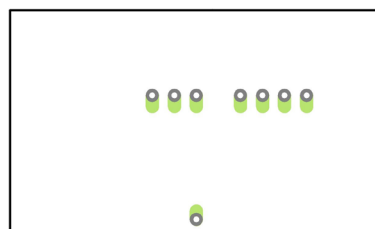
Dual output models



Top view



Bottom view



Suggested components to comply with EN 55032 Conducted Emissions Class B limits

Model	C1	L1
TMR 3-05xx TMR 3-05xxHI	10 μ F / 10 V, 1206 MLCC	3.3 μ H / 2.0 A, 0.06 Ω , SMD Inductor TCK-044
TMR 3-12xx TMR 3-12xxHI	2.2 μ F / 25 V, 1206 MLCC	18 μ H / 1.2 A, 0.15 Ω , SMD Inductor TCK-046
TMR 3-24xx TMR 3-24xxHI	6.8 μ F / 50 V, 1812 MLCC	18 μ H / 1.2 A, 0.15 Ω , SMD Inductor TCK-046
TMR 3-48xx TMR 3-48xxHI	2.2 μ F / 100 V, 1812 MLCC	56 μ H / 0.7 A, 0.4 Ω , SMD Inductor TCK-045

TCK-044 datasheet: www.tracopower.com/overview/tck-044

TCK-046 datasheet: www.tracopower.com/overview/tck-046

TCK-045 datasheet: www.tracopower.com/overview/tck-045