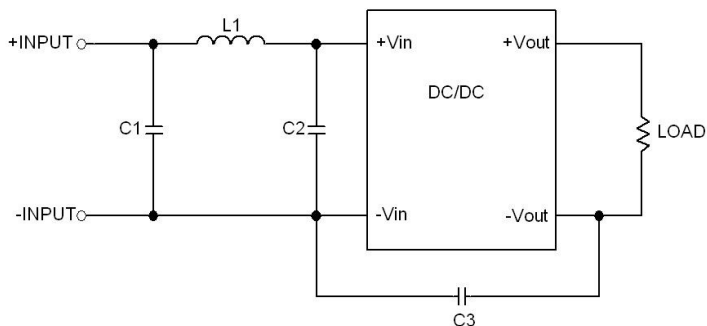


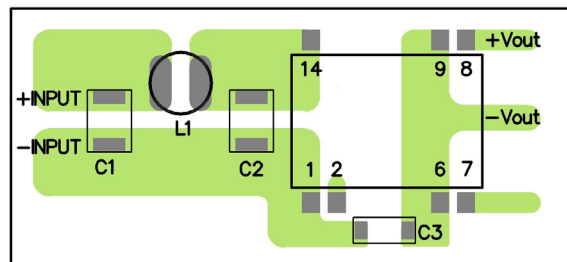
EMI Consideration

Suggested filter to comply with EN 55032 Class A resp. B limits

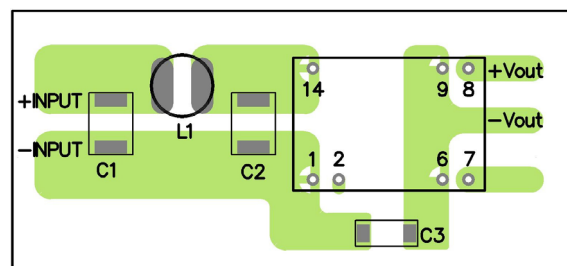
Single output models



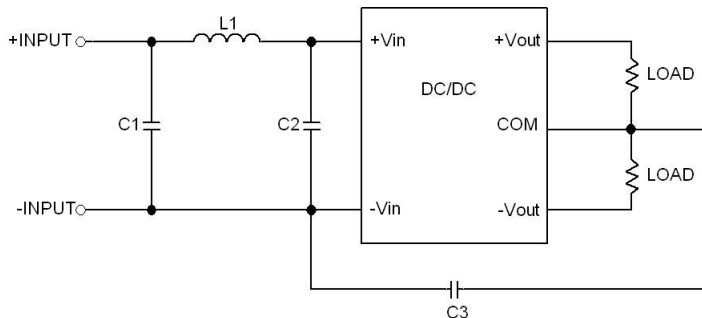
SMD models



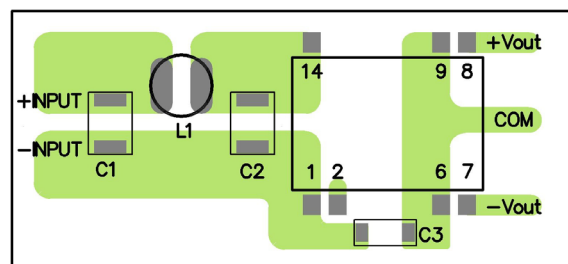
DIP models



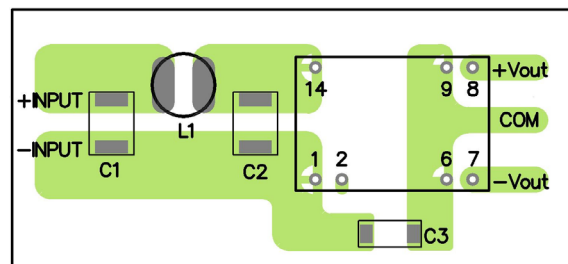
Dual output models



SMD models



DIP models



Suggested components

Suggested components to comply with EN 55032 Class A limits				
Model	C1	C2	C3	L1
TDR 3-05xx(SM)	10 μ F / 25 V 1812 MLCC	N/A	220 pF / 3 kV 1808 MLCC	3.3 μ H / 2.0 A / 0.06 Ω 0504 SMD / TCK-044
TDR 3-12xx(SM)	4.7 μ F / 25 V 1812 MLCC	N/A	220 pF / 3 kV 1808 MLCC	12 μ H / 1.4 A / 0.12 Ω 0504 SMD / TCK-062
TDR 3-24xx(SM)	4.7 μ F / 50 V 1812 MLCC	N/A	330 pF / 3 kV 1808 MLCC	18 μ H / 1.2 A / 0.15 Ω 0504 SMD / TCK-046
TDR 3-48xx(SM)	4.7 μ F / 100 V 1812 MLCC	N/A	220 pF / 3 kV 1808 MLCC	18 μ H / 1.2 A / 0.15 Ω 0504 SMD / TCK-046

Suggested components to comply with EN 55032 Class B limits				
Model	C1	C2	C3	L1
TDR 3-05xx(SM)	10 μ F / 25 V 1812 MLCC	10 μ F / 25 V 1812 MLCC	220 pF / 3 kV 1808 MLCC	3.3 μ H / 2.0 A / 0.06 Ω 0504 SMD / TCK-044
TDR 3-12xx(SM)	4.7 μ F / 25 V 1812 MLCC	4.7 μ F / 25 V 1812 MLCC	220 pF / 3 kV 1808 MLCC	12 μ H / 1.4 A / 0.12 Ω 0504 SMD / TCK-062
TDR 3-24xx(SM)	4.7 μ F / 50 V 1812 MLCC	4.7 μ F / 50 V 1812 MLCC	330 pF / 3 kV 1808 MLCC	18 μ H / 1.2 A / 0.15 Ω 0504 SMD / TCK-046
TDR 3-48xx(SM)	4.7 μ F / 100 V 1812 MLCC	4.7 μ F / 100 V 1812 MLCC	220 pF / 3 kV 1808 MLCC	18 μ H / 1.2 A / 0.15 Ω 0504 SMD / TCK-046

TCK datasheets

TCK-044: www.tracopower.com/overview/tck-044

TCK-062: www.tracopower.com/overview/tck-062

TCK-046: www.tracopower.com/overview/tck-046