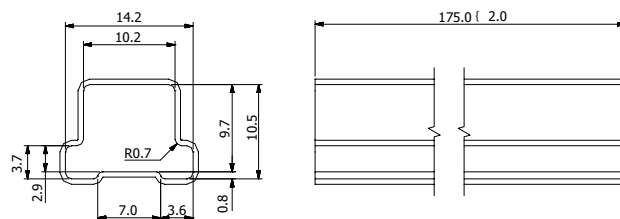


### Tube, Tape & Reel dimension - Single Output Models

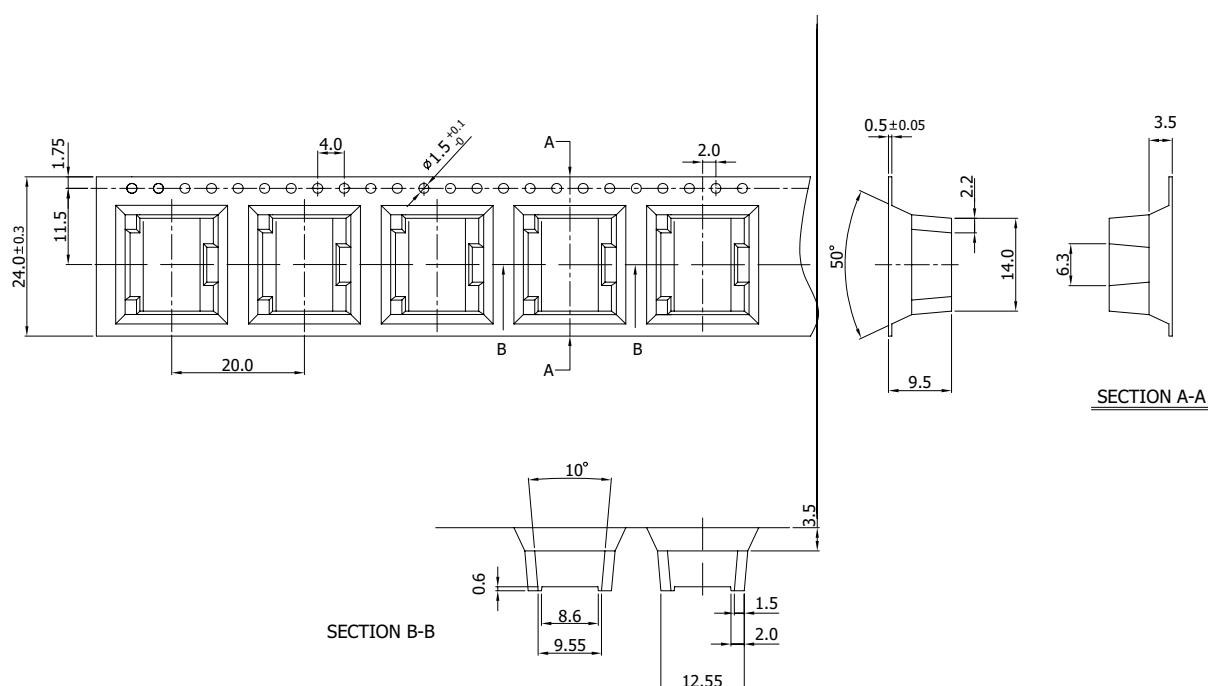
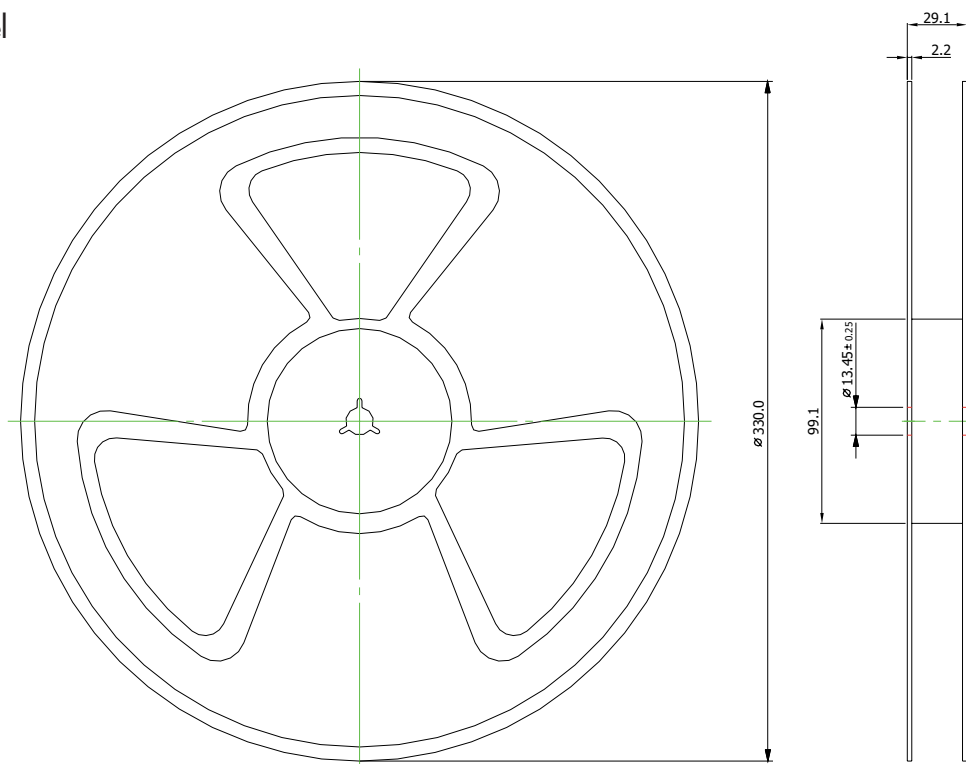
#### Standard Packaging - Tube

- 1 Tube contains 10 converters



#### Optional Packaging - Tape & Reel

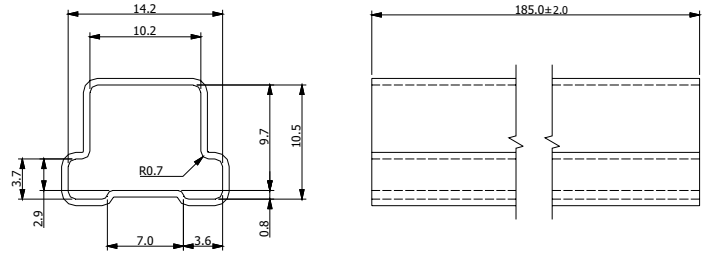
- Specifications according IEC 286-3
- 1 Reel contains 300 converters
- Use appendix «TR» on order code



## Tube, Tape & Reel dimension - Dual Output Models

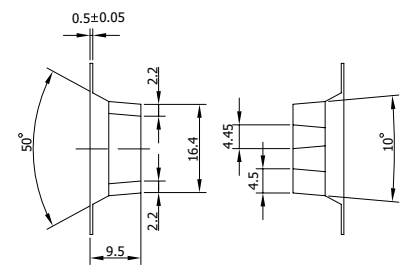
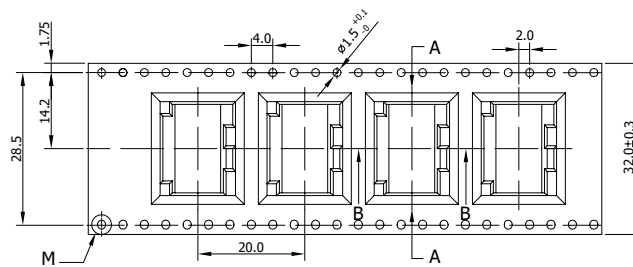
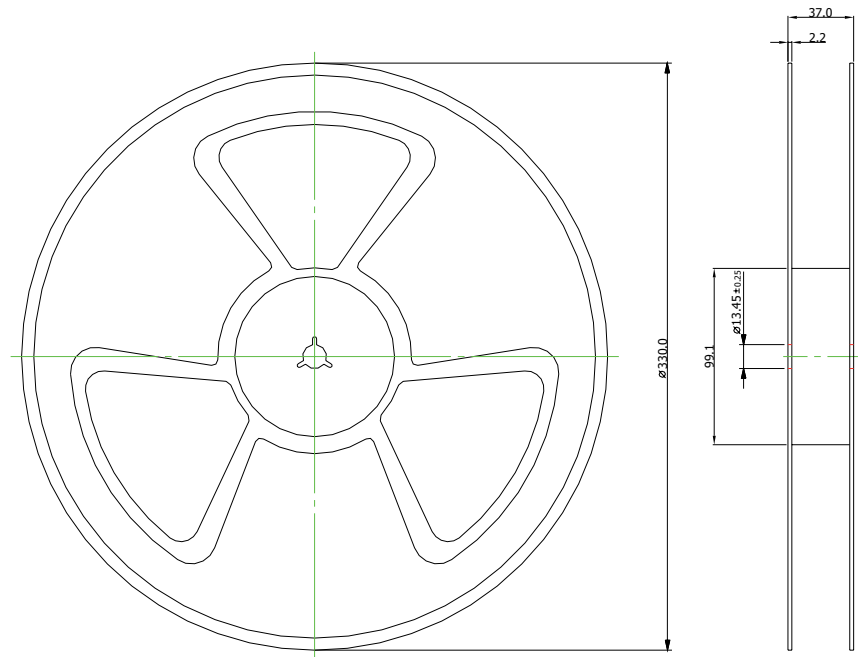
### Standard Packaging - Tube

- 1 Tube contains 10 converters

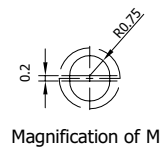


### Optional Packaging - Tape & Reel

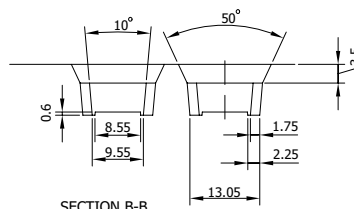
- Specifications according IEC 286-3
- 1 Reel contains 300 converters
- Use appendix «TR» on order code



SECTION A-A



Magnification of M



SECTION B-B

Specifications can be changed any time without notice.

Dimensions in [mm], Tolerance ±0.1mm