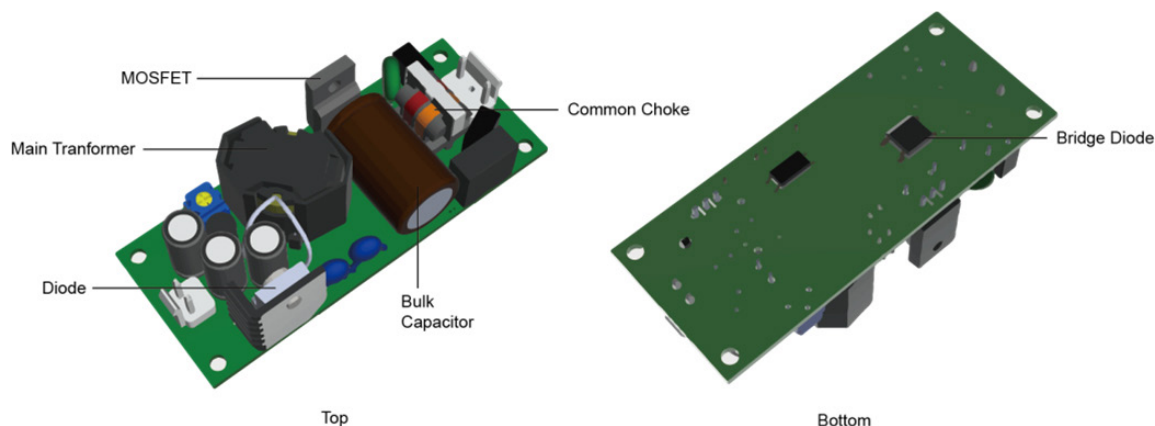


### Thermal Consideration

#### Max. temperature of key components

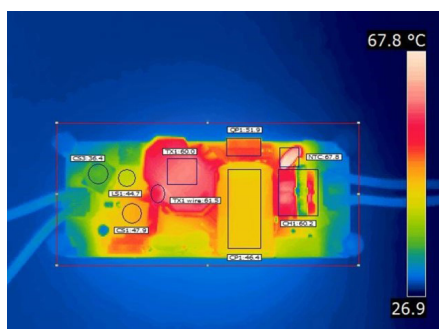


Component	Bridge Diode	Common Choke	MOSFET	Bulk Cap.	Diode	Main Transformer
Temp. limit [°C]	120	125	120	105	120	125

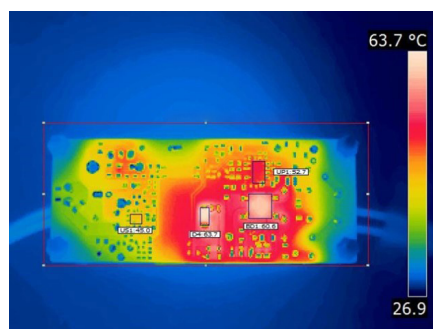
Note: - TPP 30-112A-J is chosen as a representative model in this document.

#### Thermal cam images

115 Vin; Full Load; Natural Convection; Top View

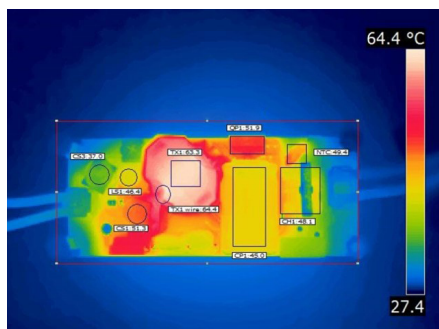


115 Vin; Full Load; Natural Convection; Bottom View



Component	TX1 wire	TX1 core	NTC	BD1	CH1	QP1	CP1	CS1	CS3	LS1	UP1	US1	D4
Temp. [°C]	61.5	60	67.8	60.6	60.2	51.9	45	47.9	36.4	44.7	52.7	45	63.7

230 Vin; Full Load; Natural Convection; Top View



230 Vin; Full Load; Natural Convection; Bottom View



Component	TX1 wire	TX1 core	NTC	BD1	CH1	QP1	CP1	CS1	CS3	LS1	UP1	US1	D4
Temp. [°C]	64.4	63.3	49.4	50.6	48.1	51.9	45	51.3	37	46.4	49.6	46.9	60.7