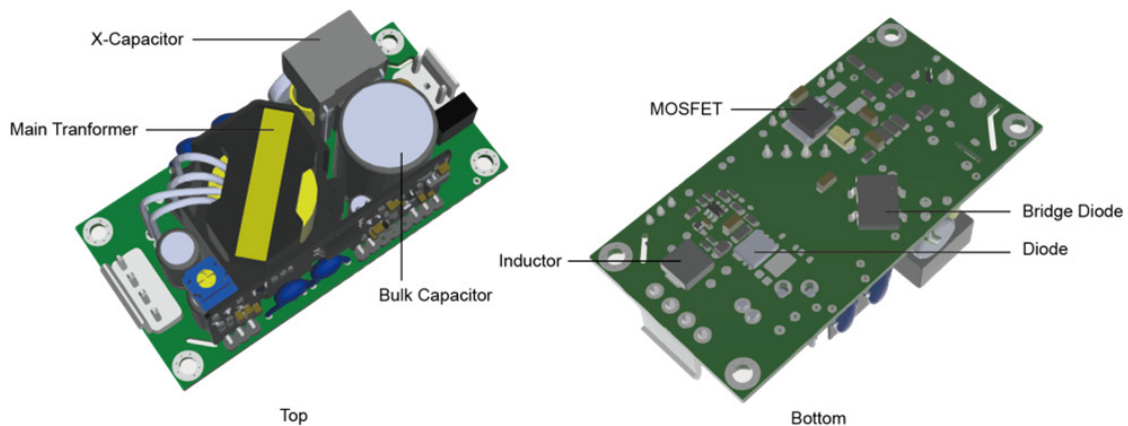


Thermal Consideration

Max. temperature of key components

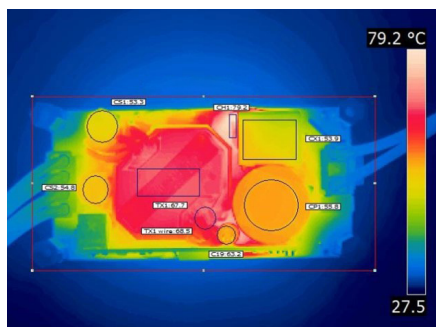


Component	Bridge Diode	X-Capacitor	Inductor	MOSFET	Bulk Cap.	Diode	Main Transformer
Temp. limit [°C]	120	125	125	120	105	120	125

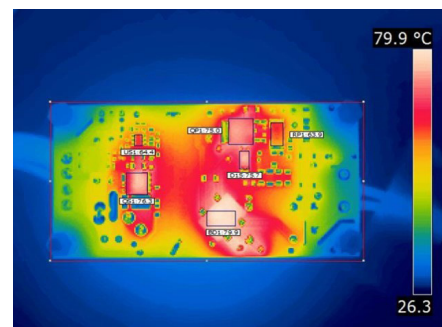
Note: - TPI 50-124A-J is chosen as a representative model in this document.

Thermal cam images

115 Vin; Full Load; Natural Convection; Top View

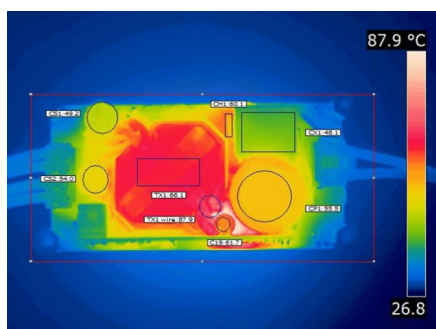


115 Vin; Full Load; Natural Convection; Bottom View

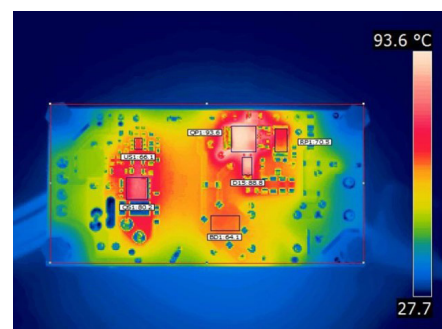


Component	TX1 wire	TX1 core	BD1	CH1	QP1	QS1	CP1	CS1	CS2	CX1	C19	US1	PR1	D15
Temp. [°C]	68.5	67.7	79.9	79.2	75	76.3	55.6	53.3	54.8	53.9	63.2	64.4	63.9	75.7

230 Vin; Full Load; Natural Convection; Top View



230 Vin; Full Load; Natural Convection; Bottom View



Component	TX1 wire	TX1 core	BD1	CH1	QP1	QS1	CP1	CS1	CS2	CX1	C19	US1	PR1	D15
Temp. [°C]	87.9	66.1	64.1	60.1	93.6	80.2	55.5	49.2	54	48.1	61.7	66.1	70.5	88.8