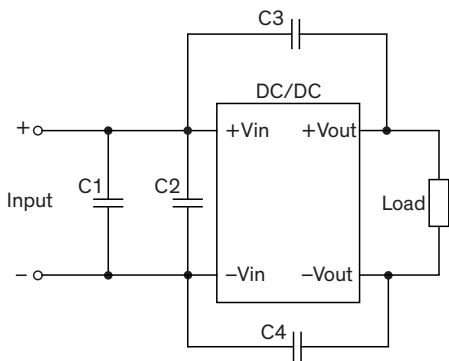


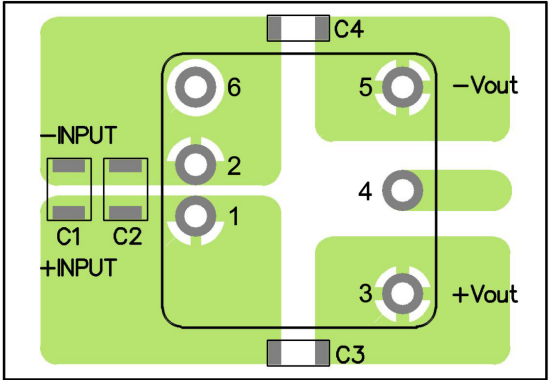
EMI Consideration

Suggested filter to comply with EN 55032 Conducted and Radiated Emissions Class A limits

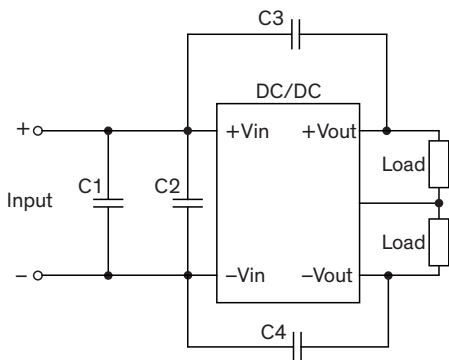
Single output models



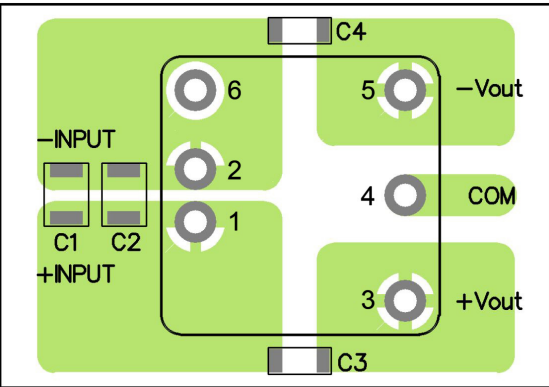
PCB layout suggestion



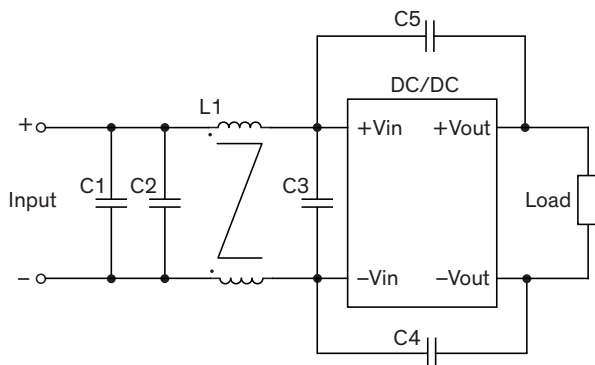
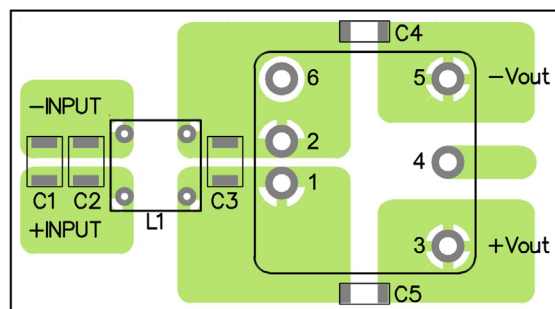
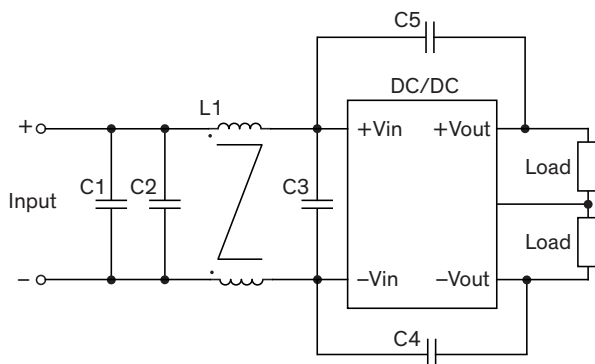
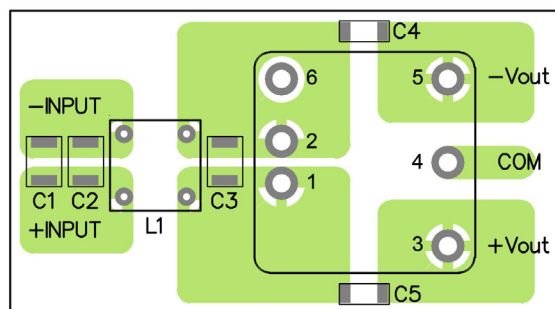
Dual output models



PCB layout suggestion



Suggested components to comply with EN 55032 Conducted and Radiated Emissions Class A limits				
Model	C1	C2	C3	C4
THN 15-12xx	10 μ F / 50 V 1812 MLCC	-	470 pF / 2 kV 1808 MLCC	470 pF / 2 kV 1808 MLCC
THN 15-24xx	6.8 μ F / 50 V 1812 MLCC	6.8 μ F / 50 V 1812 MLCC	470 pF / 2 kV 1808 MLCC	470 pF / 2 kV 1808 MLCC
THN 15-48xx	2.2 μ F / 100 V 1812 MLCC	2.2 μ F / 100 V 1812 MLCC	470 pF / 2 kV 1808 MLCC	470 pF / 2 kV 1808 MLCC

Suggested filter to comply with EN 55032 Conducted and Radiated Emissions Class B limits
Single output models

PCB layout suggestion

Dual output models

PCB layout suggestion

Suggested components to comply with EN 55032 Conducted and Radiated Emissions Class B limits

Model	C1	C2	C3	C4	C5	L1
THN 15-12xx	10 μ F / 50 V 1812 MLCC	-	10 μ F / 50 V 1812 MLCC	470 pF / 2 kV 1808 MLCC	470 pF / 2 kV 1808 MLCC	145 μ H TCK-051 Common-Choke
THN 15-24xx	6.8 μ F / 50 V 1812 MLCC	-	6.8 μ F / 50 V 1812 MLCC	470 pF / 2 kV 1808 MLCC	470 pF / 2 kV 1808 MLCC	325 μ H TCK-050 Common-Choke
THN 15-48xx	2.2 μ F / 100 V 1812 MLCC	2.2 μ F / 100 V 1812 MLCC	2.2 μ F / 100 V 1812 MLCC	1000 pF / 2 kV 1808 MLCC	1000 pF / 2 kV 1808 MLCC	325 μ H TCK-050 Common-Choke

TCK-050 datasheet: www.tracopower.com/overview/tck-050

TCK-051 datasheet: www.tracopower.com/overview/tck-051