

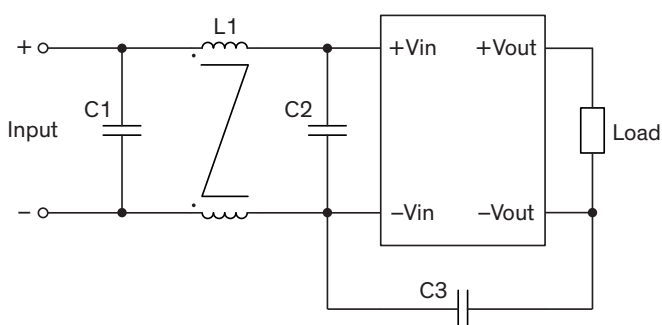
EMI Consideration

Suggested filter to comply with EN 55032 Conducted and Radiated Emissions Class A limits

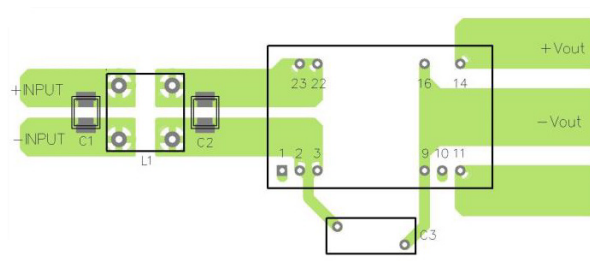
TEN 6WIRH series meet EN 55032 Conducted and Radiated Emissions Class A limits without external components.

Suggested filter to comply with EN 55032 Conducted and Radiated Emissions Class B limits

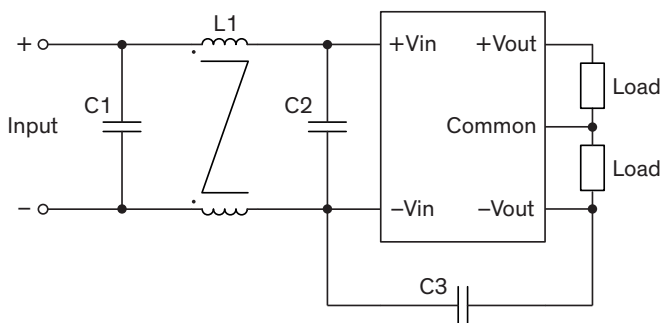
Single output models



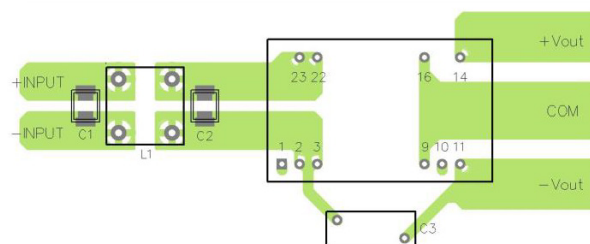
Layout suggestion Top View



Dual output models



Layout suggestion Top View



Suggested components to comply with EN 55032 Conducted and Radiated Emissions Class B limits

Model	C1, C2	C3	L1
TEN 6-xxxxxWIRH	680 nF / 250 V / 1210 MLCC	680 pF / Y1 capacitor	620 μ H / TCK-019

TCK-019 datasheet: www.tracopower.com/overview/tck-019