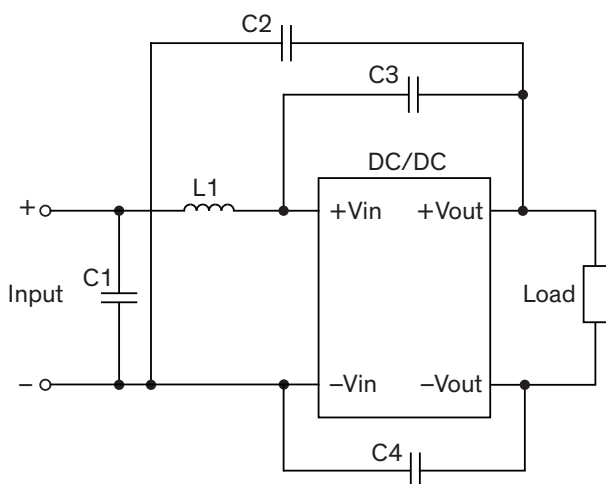


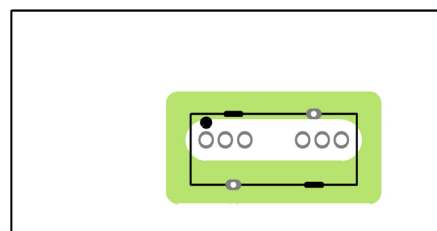
### EMI Consideration

Suggested filter to comply with EN 55032 Class A limits (for 24 & 28 Vin models)

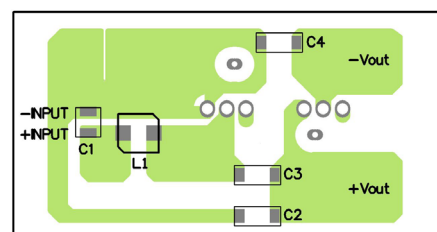
#### Single output models



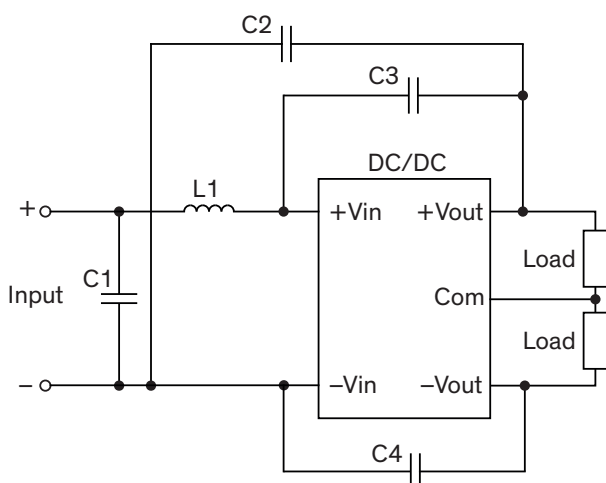
Layout suggestion Top view



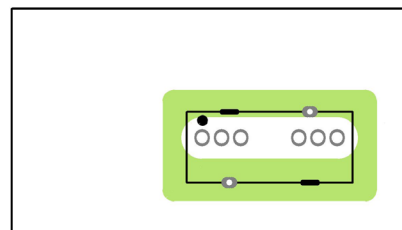
Layout suggestion Bottom view



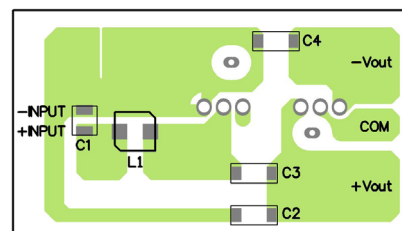
#### Dual output models



Layout suggestion Top view



Layout suggestion Bottom view



### Suggested components to comply with EN 55032 Class A limits

Model	C1	C2, C3, C4	L1
TMR 6-24xxWIR	10 $\mu$ F / 50 V 1210 MLCC	1 nF / 3kV 1808 MLCC	22 $\mu$ H / 1.1 A SMD-Inductor TCK-149
TMR 6-48xxWIR	4.7 $\mu$ F / 100 V 1210 MLCC		68 $\mu$ H / 590 mA SMD-Inductor TCK-150

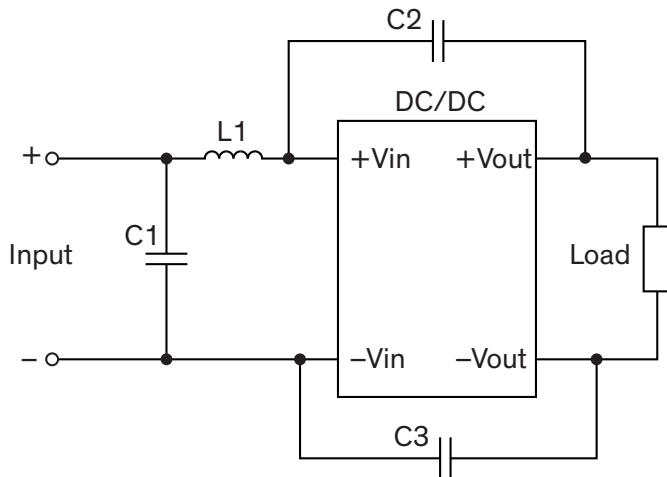
TCK-149 datasheet: [www.tracopower.com/products/tck149.pdf](http://www.tracopower.com/products/tck149.pdf)

TCK-150 datasheet: [www.tracopower.com/products/tck150.pdf](http://www.tracopower.com/products/tck150.pdf)

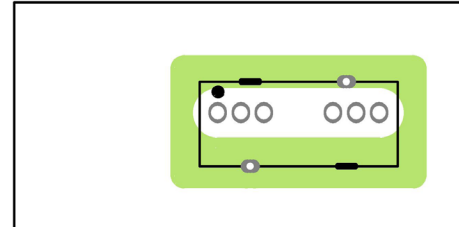
### EMI Consideration

Suggested filter to comply with EN 55032 Class A limits (for 110 Vin models)

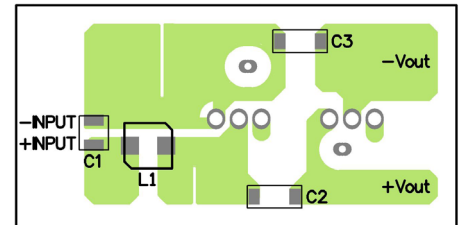
#### Single output models



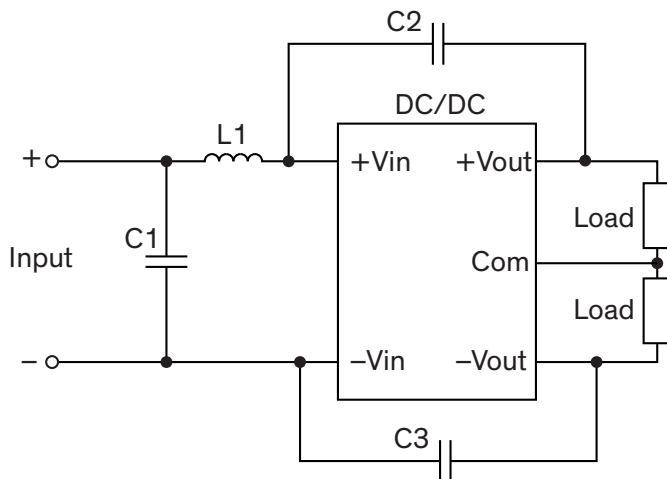
Layout suggestion Top view



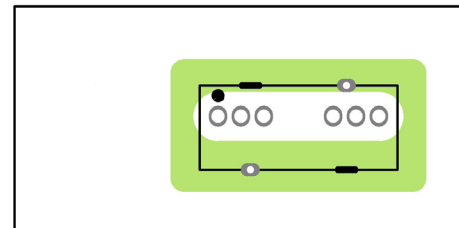
Layout suggestion Bottom view



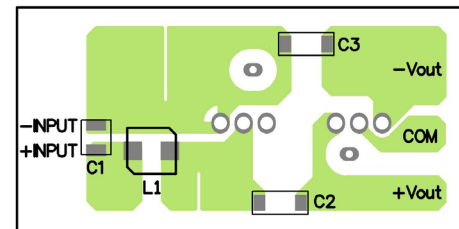
#### Dual output models



Layout suggestion Top view



Layout suggestion Bottom view



#### Suggested components to comply with EN 55032 Class A limits

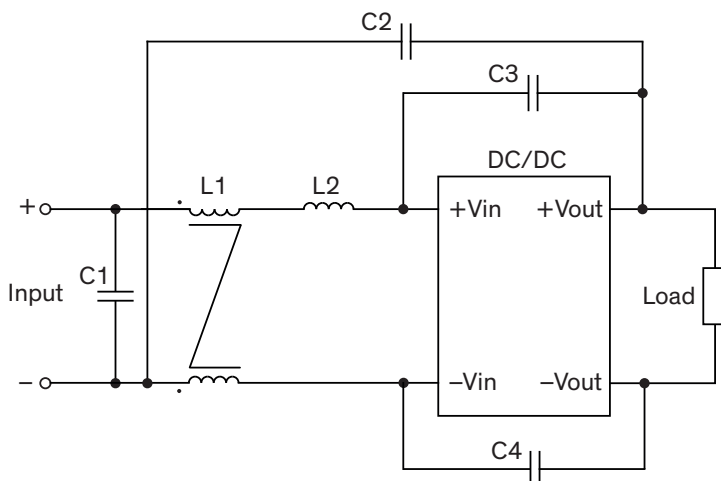
Model	C1	C2, C3	L1
TMR 6-72xxWIR	680 nF / 250 V 1210 MLCC	1 nF / 3 kV 1808 MLCC	150 $\mu$ H / 320 mA SMD-Inductor TCK-161

TCK-161 datasheet: [www.tracopower.com/products/tck161.pdf](http://www.tracopower.com/products/tck161.pdf)

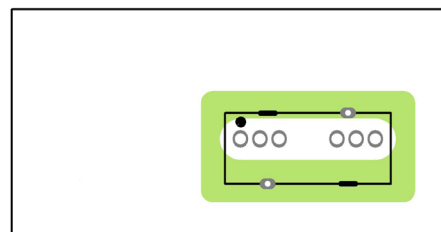
## EMI Consideration

Suggested filter to comply with EN 55032 Class B limits (for 24 & 48 Vin models)

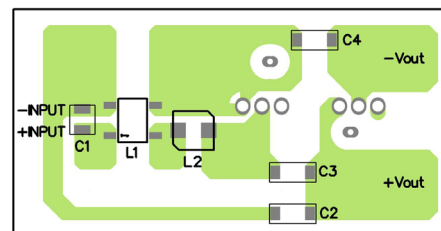
### Single output models



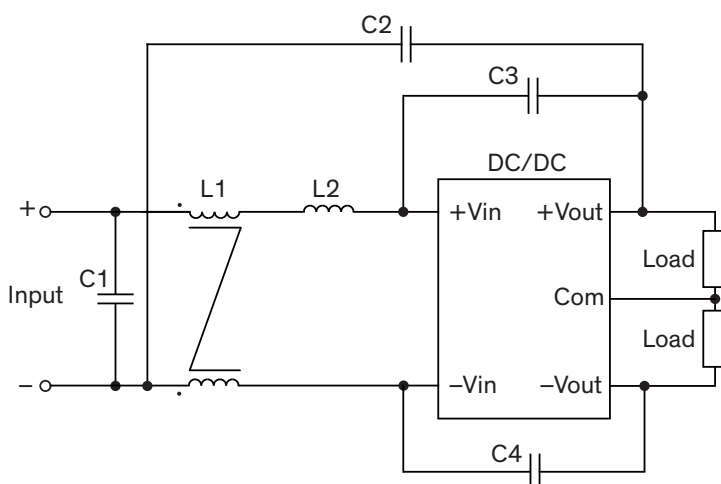
Layout suggestion Top view



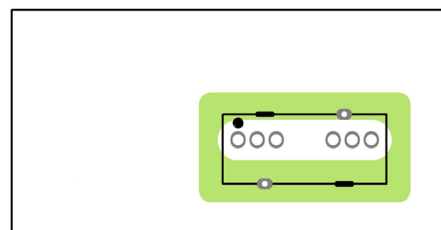
Layout suggestion Bottom view



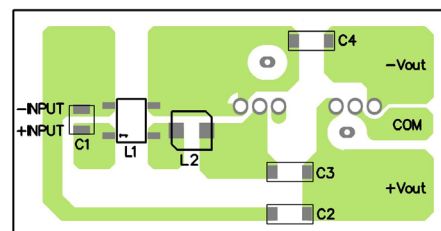
### Dual output models



Layout suggestion Top view



Layout suggestion Bottom view



### Suggested components to comply with EN 55032 Class B limits

Model	C1	C2, C3	L1	L2
TMR 6-24xxWIR	10 $\mu$ F / 50 V 1210 MLCC	1 nF / 3kV 1808 MLCC	16.1 $\mu$ H / 1.44 A Common mode choke TCK-138	22 $\mu$ H / 1.1 A SMD-Inductor TCK-149
TMR 6-48xxWIR	4.7 $\mu$ F / 100 V 1210 MLCC		137.5 $\mu$ H / 640 mA Common mode choke TCK-140	68 $\mu$ H / 590 mA SMD-Inductor TCK-150

TCK-138 datasheet: [www.tracopower.com/products/tck138.pdf](http://www.tracopower.com/products/tck138.pdf)

TCK-140 datasheet: [www.tracopower.com/products/tck140.pdf](http://www.tracopower.com/products/tck140.pdf)

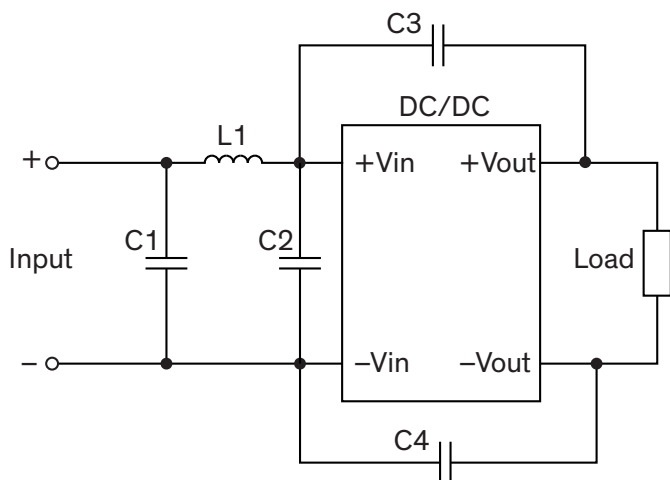
TCK-149 datasheet: [www.tracopower.com/products/tck149.pdf](http://www.tracopower.com/products/tck149.pdf)

TCK-150 datasheet: [www.tracopower.com/products/tck150.pdf](http://www.tracopower.com/products/tck150.pdf)

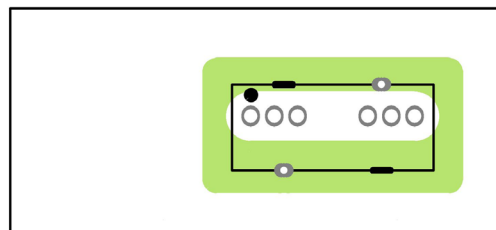
### EMI Consideration

#### Suggested filter to comply with EN 55032 Class B limits (for 110 Vin models)

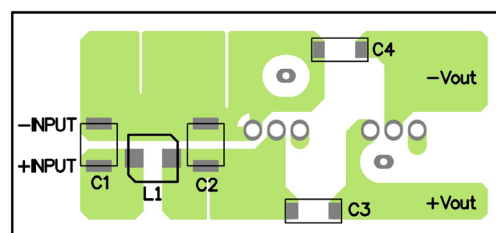
##### Single output models



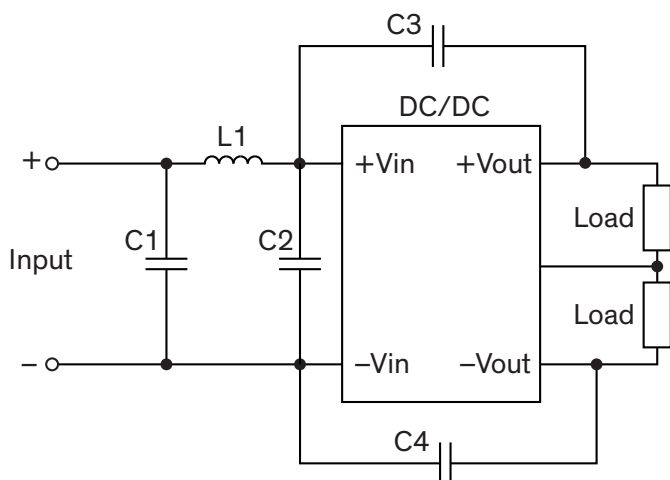
##### Layout suggestion Top view



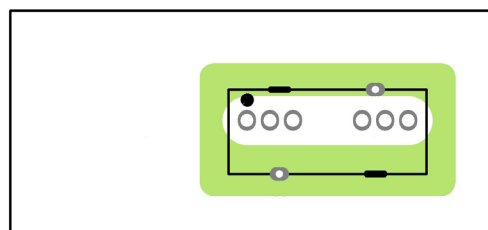
##### Layout suggestion Bottom view



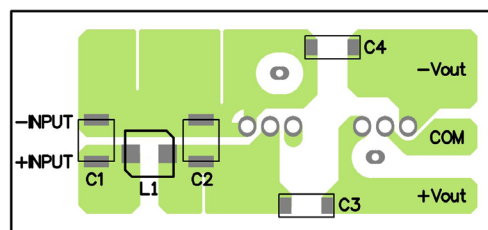
##### Dual output models



##### Layout suggestion Top view



##### Layout suggestion Bottom view



#### Suggested components to comply with EN 55032 Class B limits

Model	C1, C2	C3, C4	L1
TMR 6-72xxWIR	1 $\mu$ F / 250 V 1812 MLCC	1 nF / 3 kV 1808 MLCC	150 $\mu$ H / 320 mA SMD-Inductor TCK-161

TCK-161 datasheet: [www.tracopower.com/products/tck161.pdf](http://www.tracopower.com/products/tck161.pdf)