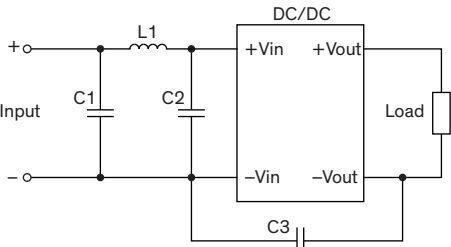


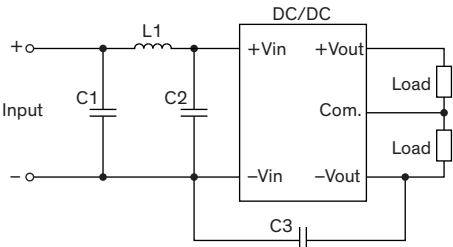
EMI Consideration

Suggested filter to comply with EN 55032 Class A & B limits

Single output models



Dual output models



EN 55032 class A

Models	C1	C2	C3	L1	inductor (accessory)	
					order code	datasheet
9 Vin	47 μ F / 16 V 1206 MLCC	–	150 pF / 3 kV 1808 MLCC	3.3 μ H / 2 A	TCK-110	www.tracopower.com/overview/tck-110
24 Vin	10 μ F / 50 V 1206 MLCC	–	330 pF / 3 kV 1808 MLCC	22 μ H / 0.68 A	TCK-132	www.tracopower.com/overview/tck-132
48 Vin	2.2 μ F / 100 V 1210 MLCC	2.2 μ F / 100 V 1210 MLCC	330 pF / 3 kV 1808 MLCC	68 μ H / 0.37 A	TCK-133	www.tracopower.com/overview/tck-133

EN 55032 class B

Models	C1	C2	C3	L1	inductor (accessory)	
					order code	datasheet
9 Vin	47 μ F / 16 V 1206 MLCC	47 μ F / 16 V 1206 MLCC	150 pF / 3 kV 1808 MLCC	3.3 μ H / 2 A	TCK-110	www.tracopower.com/overview/tck-110
24 Vin	10 μ F / 50 V 1206 MLCC	10 μ F / 50 V 1206 MLCC	680 pF / 3 kV 1808 MLCC	22 μ H / 0.68 A	TCK-132	www.tracopower.com/overview/tck-132
48 Vin	4.7 μ F / 100 V 1210 MLCC	2.2 μ F / 100 V 1206 MLCC	680 pF / 3 kV 1808 MLCC	68 μ H / 0.37 A	TCK-133	www.tracopower.com/overview/tck-133