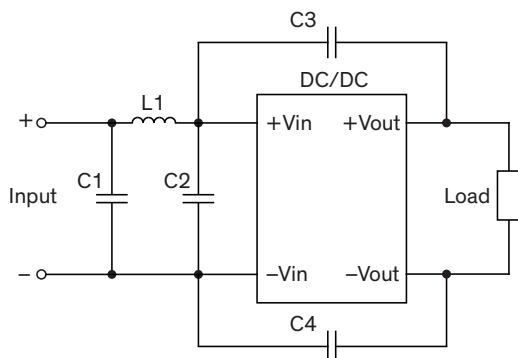


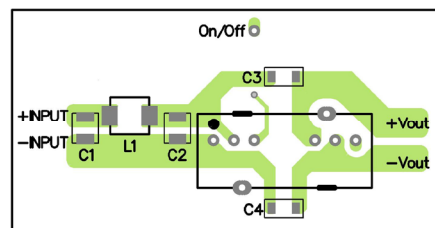
EMI Consideration

Suggested filter to comply with EN 55032 Conducted and Radiated Emissions Class A limits

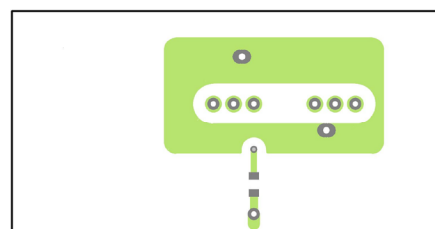
Single output models



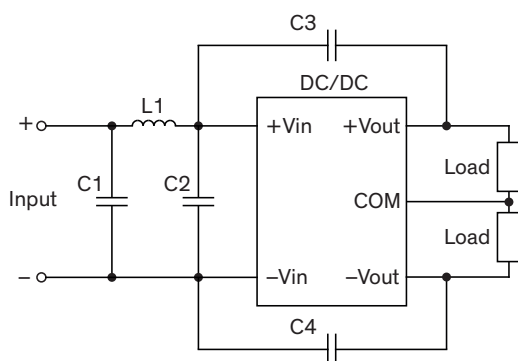
Top view



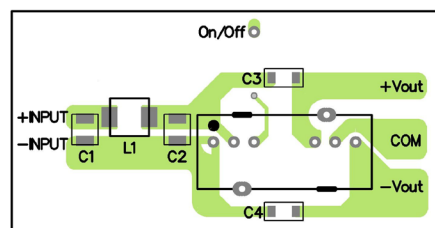
Bottom view



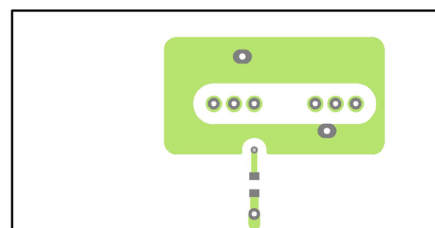
Dual output models



Top view



Bottom view



Suggested components to comply with EN 55032 Conducted and Radiated Emissions Class A limits

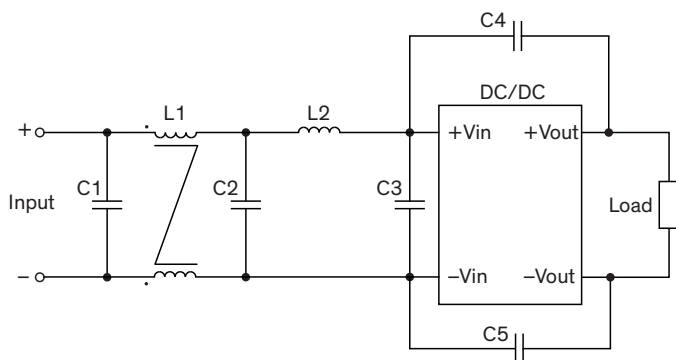
Model	C1	C2	C3, C4	L1
TMR 9-24xxWI	10 μ F / 50 V 1210 MLCC	-	1000 pF / 2 kV 1206 MLCC	3.3 μ H TCK-108
TMR 9-481xWI	4.7 μ F / 100 V 1210 MLCC	4.7 μ F / 100 V 1210 MLCC	680 pF / 2 kV 1206 MLCC	10 μ H TCK-116
TMR 9-482xWI	4.7 μ F / 100 V 1210 MLCC	4.7 μ F / 100 V 1210 MLCC	1000 pF / 2 kV 1206 MLCC	10 μ H TCK-116

TCK-108 datasheet: www.tracopower.com/overview/tck-108

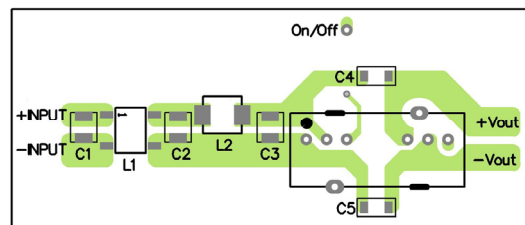
TCK-116 datasheet: www.tracopower.com/overview/tck-116

Suggested filter to comply with EN 55032 Conducted and Radiated Emissions Class B limits

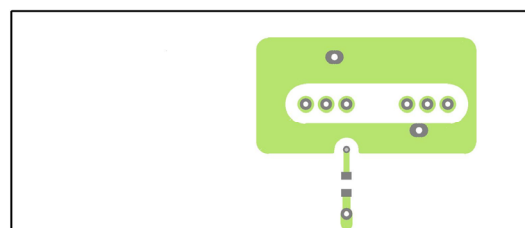
Single output models



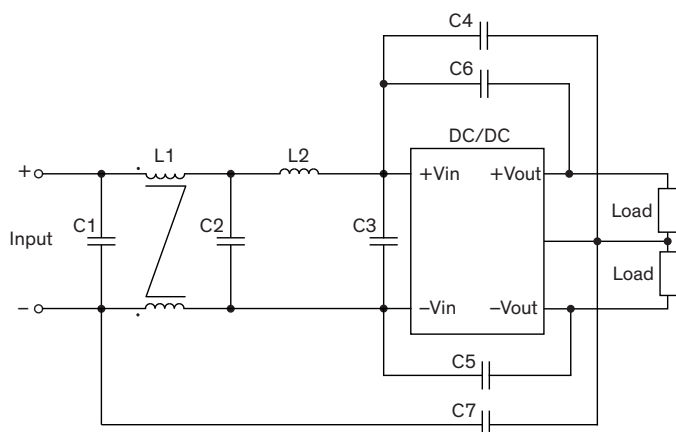
Top view



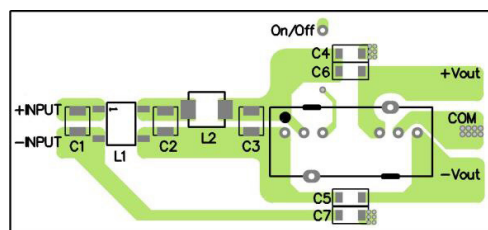
Bottom view



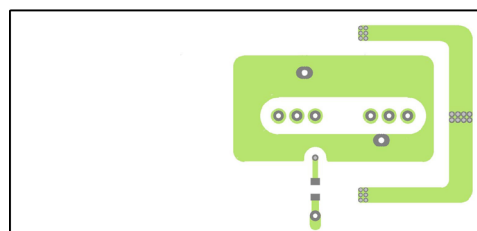
Dual output models



Top view



Bottom view



Suggested components to comply with EN 55032 Conducted and Radiated Emissions Class B limits

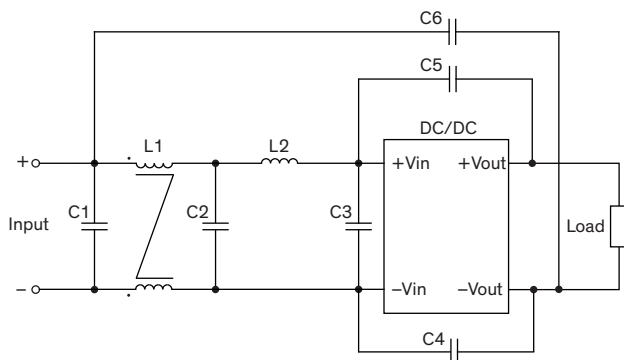
Model	C1, C2, C3	C4, C5	C6	C7	L1	L2
TMR 9-241xWI	10 μ F / 50 V 1210 MLCC	220 pF / 2 kV 1206 MLCC	-	-	16.1 μ H TCK-138	10 μ H / 2.3 A TCK-116
TMR 9-242xWI	10 μ F / 100 V 1210 MLCC	220 pF / 2 kV 1206 MLCC	150 pF / 2 kV 1206 MLCC	1000 pF / 2 kV 1206 MLCC	16.1 μ H TCK-138	10 μ H / 2.3 A TCK-116

TCK-116 datasheet: www.tracopower.com/overview/tck-116

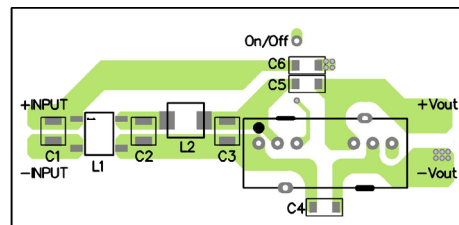
TCK-138 datasheet: www.tracopower.com/overview/tck-138

Suggested filter to comply with EN 55032 Conducted and Radiated Emissions Class B limits

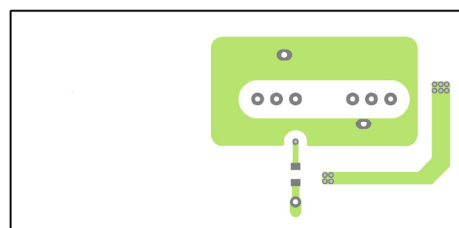
Single output models



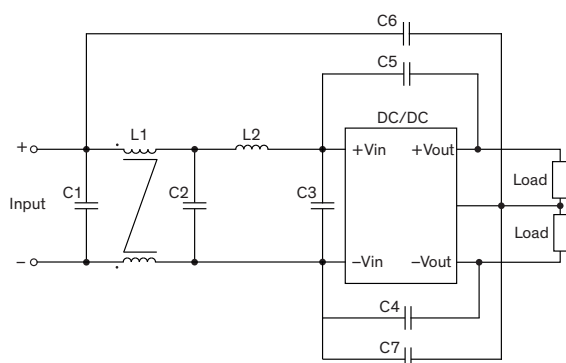
Top view



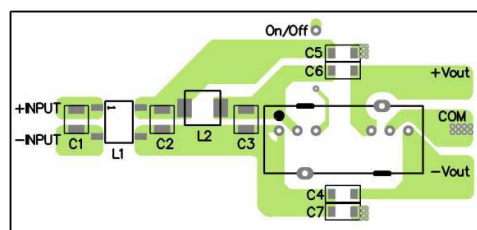
Bottom view



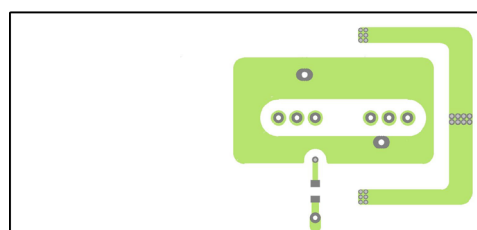
Dual output models



Top view



Bottom view



Suggested components to comply with EN 55032 Conducted and Radiated Emissions Class B limits

Model	C1, C2, C3	C4, C5	C6	C7	L1	L2
TMR 9-481xWI	4.7 μ F / 100 V 1210 MLCC	1000 pF / 2 kV 1206 MLCC	220 μ F / 2 V 1206 MLCC	-	137.5 μ H TCK-140	10 μ H / 2.3 A TCK-116
TMR 9-482xWI	4.7 μ F / 100 V 1210 MLCC	1000 pF / 2 kV 1206 MLCC	150 μ F / 2 kV 1206 MLCC	150 μ F / 2 kV 1206 MLCC	137.5 μ H TCK-140	10 μ H / 2.3 A TCK-116

TCK-116 datasheet: www.tracopower.com/overview/tck-116

TCK-140 datasheet: www.tracopower.com/overview/tck-140