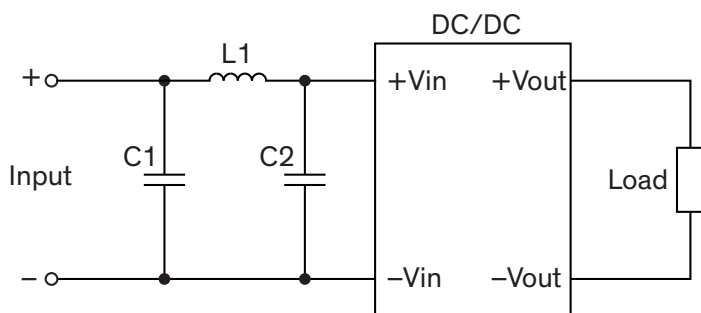


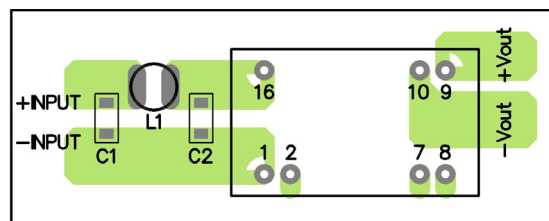
EMI Consideration

Suggested filter to comply with EN 55032 Class A/B limits

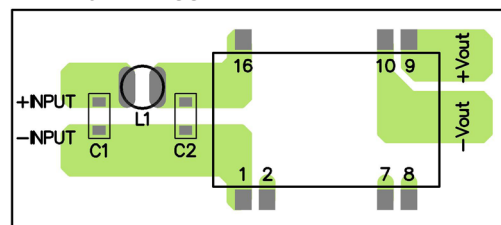
Single output models



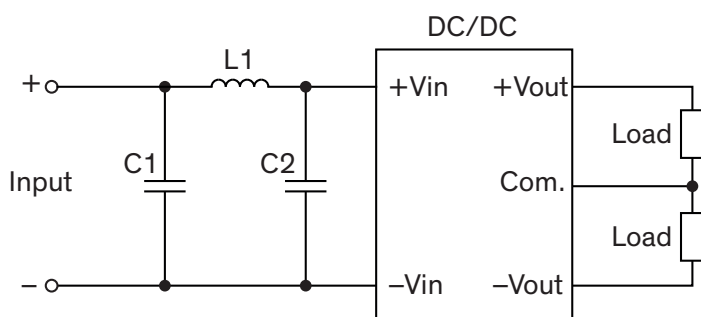
DIP layout suggestion



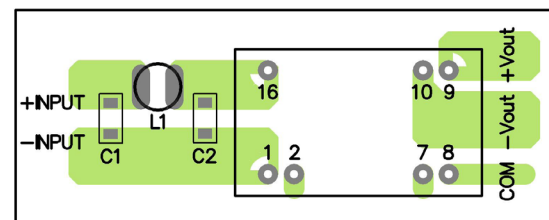
SMD layout suggestion



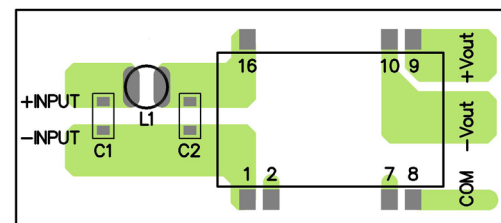
Dual output models



DIP layout suggestion



SMD layout suggestion



Suggested components to comply with EN 55032 Class A limits

Model	C1	C2	L1
TIM 2-09xx(SM)	22 μ F / 16 V 1206 MLCC	N/A	3.3 μ H / 2.0 A SMD-Inductor TCK-110
TIM 2-12xx(SM)	10 μ F / 25 V 1206 MLCC	N/A	10 μ H / 1.15 A SMD-Inductor TCK-111
TIM 2-24xx(SM)	10 μ F / 50 V 1206 MLCC	N/A	15 μ H / 0.85 A SMD-Inductor TCK-131
TIM 2-48xx(SM)	2.2 μ F / 100 V 1206 MLCC	N/A	68 μ H / 0.37 A SMD-Inductor TCK-133

Suggested components to comply with EN 55032 Class B limits

Model	C1	C2	L1
TIM 2-09xx(SM)	22 μ F / 16 V 1206 MLCC	22 μ F / 16 V 1206 MLCC	6.8 μ H / 0.93 A SMD-Inductor TCK-129
TIM 2-12xx(SM)	10 μ F / 25 V 1206 MLCC	10 μ F / 25 V 1206 MLCC	10 μ H / 1.15 A SMD-Inductor TCK-111
TIM 2-24xx(SM)	10 μ F / 50 V 1206 MLCC	10 μ F / 50 V 1206 MLCC	15 μ H / 0.85 A SMD-Inductor TCK-131
TIM 2-48xx(SM)	2.2 μ F / 100 V 1206 MLCC	2.2 μ F / 100 V 1206 MLCC	68 μ H / 0.37 A SMD-Inductor TCK-133

TCK-110 datasheet: www.tracopower.com/overview/tck-110

TCK-111 datasheet: www.tracopower.com/overview/tck-111

TCK-129 datasheet: www.tracopower.com/overview/tck-129

TCK-131 datasheet: www.tracopower.com/overview/tck-131

TCK-133 datasheet: www.tracopower.com/overview/tck-133