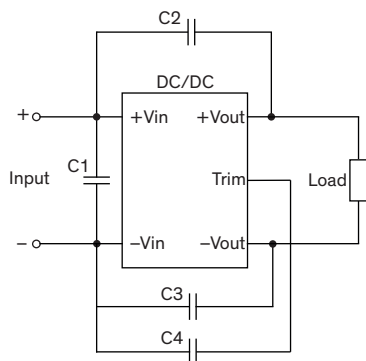


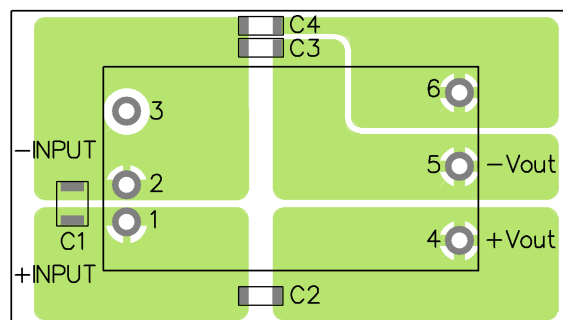
### EMI Consideration

Suggested filter to comply with EN 55032 Conducted and Radiated Emissions Class A limits

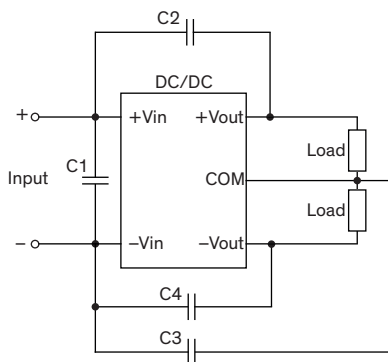
#### Single output models



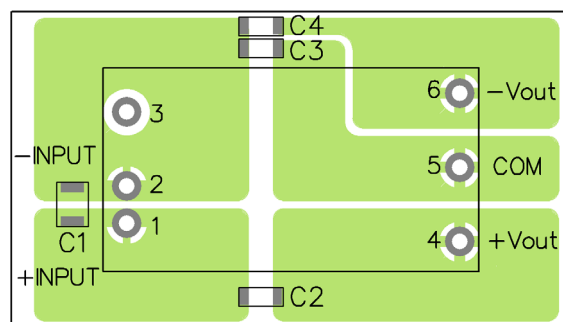
#### PCB layout suggestion



#### Dual output models



#### PCB layout suggestion

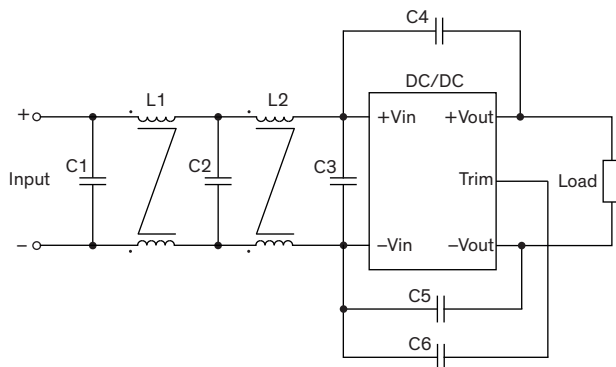


### Suggested components to comply with EN 55032 Conducted and Radiated Emissions Class A limits

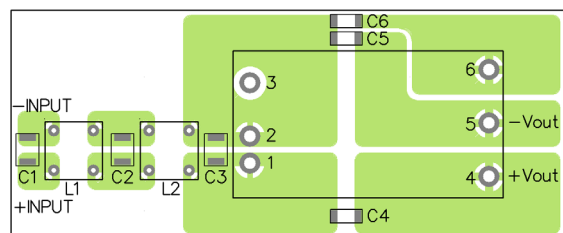
Model	C1	C2	C3	C4
TEN 30-12xx	10 $\mu$ F / 25 V 1812 MLCC	1000 pF / 2 kV 1808 MLCC	1000 pF / 2 kV 1808 MLCC	1000 pF / 2 kV 1808 MLCC
TEN 30-24xx	4.7 $\mu$ F / 50 V 1812 MLCC	1000 pF / 2 kV 1808 MLCC	1000 pF / 2 kV 1808 MLCC	1000 pF / 2 kV 1808 MLCC
TEN 30-48xx	2.2 $\mu$ F / 100 V 1812 MLCC	1000 pF / 2 kV 1808 MLCC	1000 pF / 2 kV 1808 MLCC	1000 pF / 2 kV 1808 MLCC

### Suggested filter to comply with EN 55032 Conducted and Radiated Emissions Class B limits

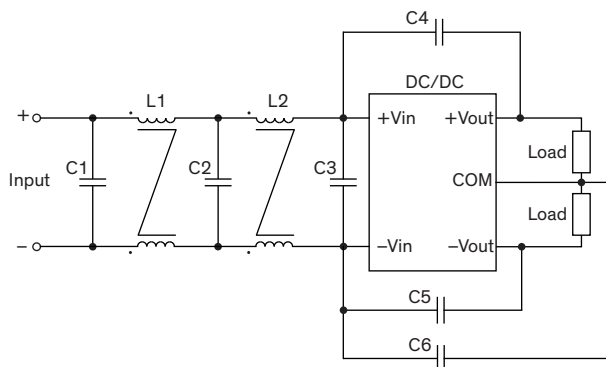
#### Single output models



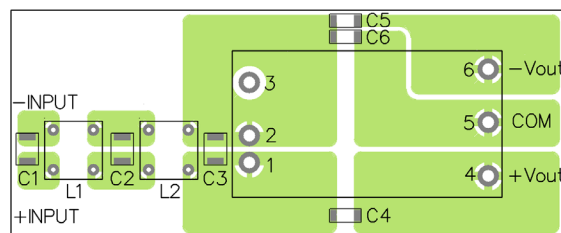
#### PCB layout suggestion



#### Dual output models



#### PCB layout suggestion



### Suggested components to comply with EN 55032 Conducted and Radiated Emissions Class B limits

Model	C1, C2, C3	C4, C5, C6	L1	L2
TEN 30-12xx	10 $\mu$ F / 25 V 1812 MLCC	1000 pF / 2 kV 1808 MLCC	3.3 $\mu$ H / TCK-075 Common-Choke	55 $\mu$ H / TCK-076 Common-Choke
TEN 30-24xx	4.7 $\mu$ F / 50 V 1812 MLCC	1000 pF / 2 kV 1808 MLCC	3.3 $\mu$ H / TCK-075 Common-Choke	55 $\mu$ H / TCK-076 Common-Choke
TEN 30-48xx	2.2 $\mu$ F / 100 V 1812 MLCC	1000 pF / 2 kV 1808 MLCC	3.3 $\mu$ H / TCK-075 Common-Choke	55 $\mu$ H / TCK-076 Common-Choke

TCK-075 datasheet: [www.tracopower.com/overview/tck-075](http://www.tracopower.com/overview/tck-075)

TCK-076 datasheet: [www.tracopower.com/overview/tck-076](http://www.tracopower.com/overview/tck-076)