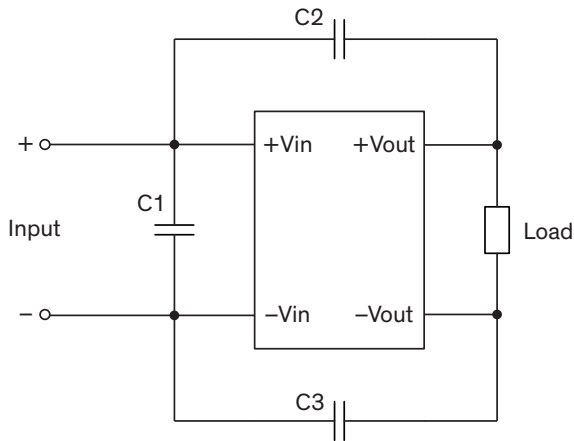


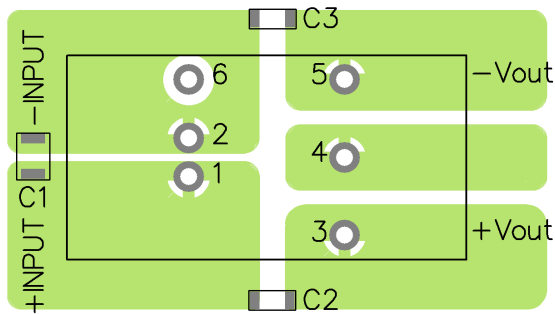
EMI Consideration

Suggested filter to comply with EN 55032 Conducted and Radiated Emissions Class A limits

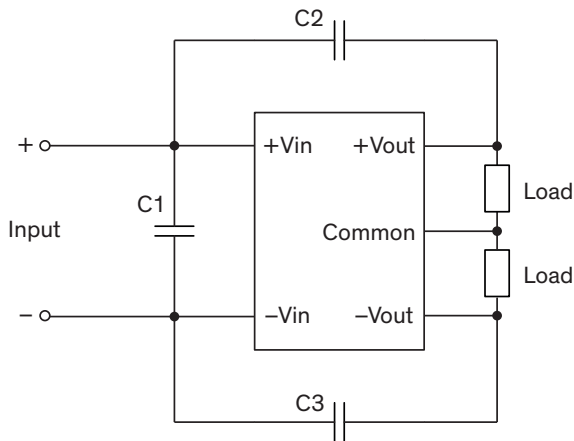
Single output models



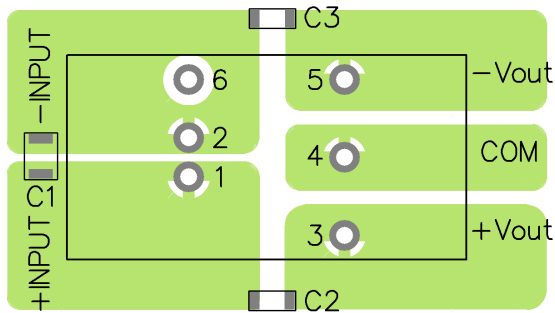
PCB layout suggestion



Dual output models

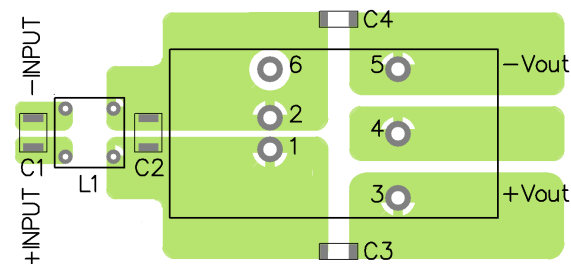
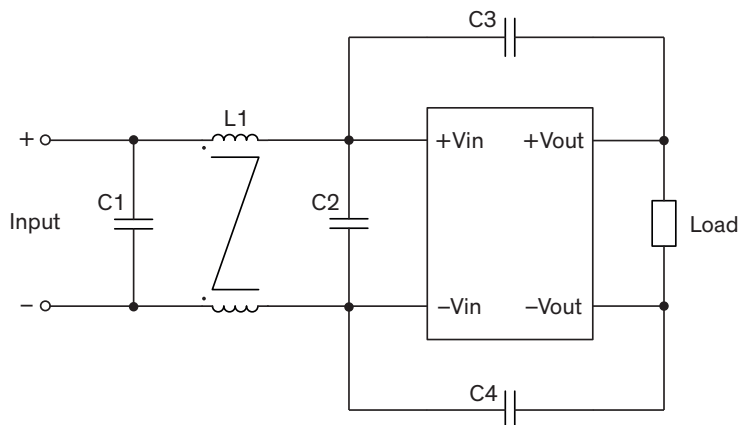
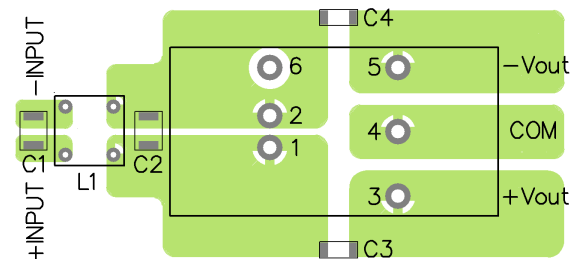
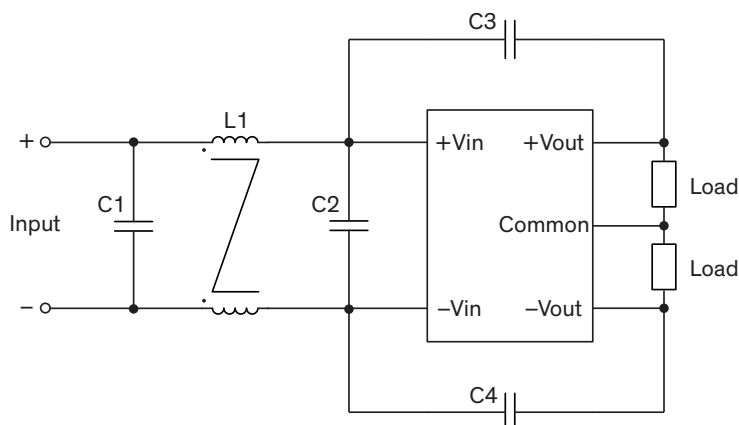


PCB layout suggestion



Suggested components to comply with EN 55032 Conducted and Radiated Emissions Class A limits

Model	C1	C2	C3
TEN 20-24xxWIN	-	1'000 pF / 2 kV / 1808 MLCC	1'000 pF / 2 kV / 1808 MLCC
TEN 20-48xxWIN	1 μ F / 100 V / 1210 MLCC		

Suggested filter to comply with EN 55032 Conducted and Radiated Emissions Class B limits
Single output models
PCB layout suggestion

Dual output models
PCB layout suggestion

Suggested components to comply with EN 55032 Conducted and Radiated Emissions Class B limits

Model	C1	C2	C3, C4	L1
TEN 20-24xxWIN	4.7 μ F / 50 V 1812 MLCC	-	1'000 pF / 2 kV 1808 MLCC	450 μ H / 5.2 A TCK-048
TEN 20-48xxWIN	2.2 μ F / 100 V 1812 MLCC	2.2 μ F / 100 V 1812 MLCC		325 μ H / 3.3 A TCK-050

TCK-048 datasheet: www.tracopower.com/overview/tck-048

TCK-050 datasheet: www.tracopower.com/overview/tck-050