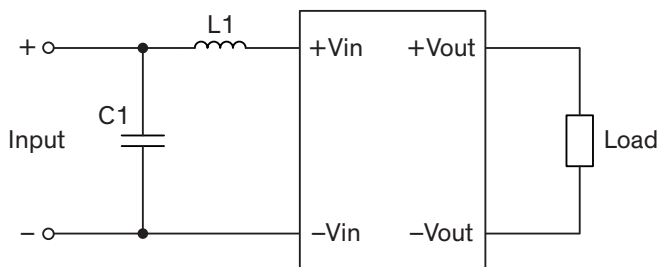


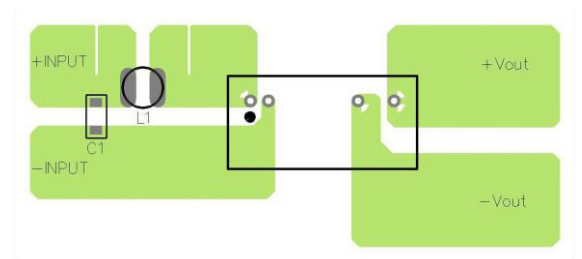
EMI Consideration

Suggested filter to comply with EN 55032 Conducted and Radiated Emissions Class A limits

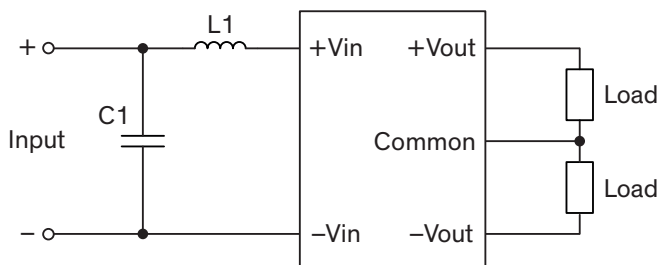
Single output models



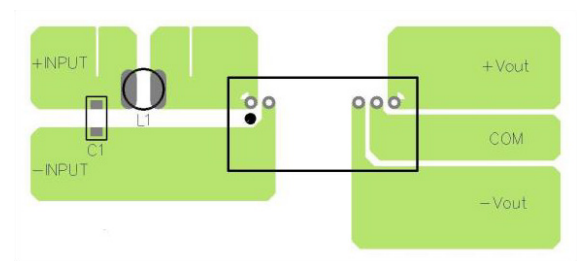
PCB layout suggestion



Dual output models



PCB layout suggestion



Suggested components to comply with EN 55032 Conducted and Radiated Emissions Class A limits

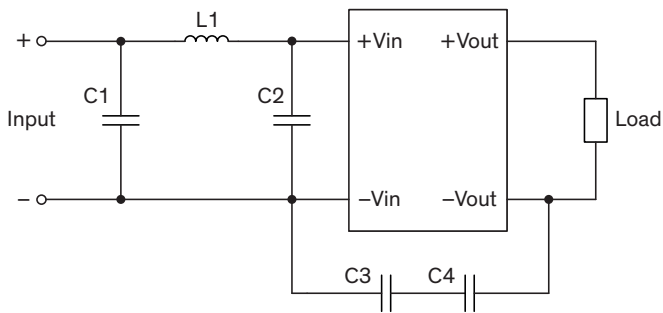
Model	C1	L1
TRV 2-05xxM	22 μ F / 25 V / 1206 MLCC	10 μ H / TCK-172
TRV 2-12xxM TRV 2-15xxM TRV 2-24xxM	10 μ F / 50 V / 1206 MLCC	22 μ H / TCK-188

TCK-172 datasheet: www.tracopower.com/overview/tck-172

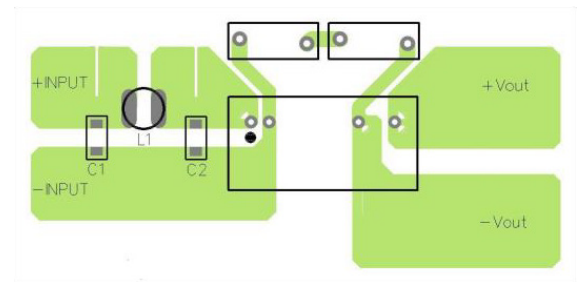
TCK-188 datasheet: www.tracopower.com/overview/tck-188

Suggested filter to comply with EN 55032 Conducted and Radiated Emissions Class B limits

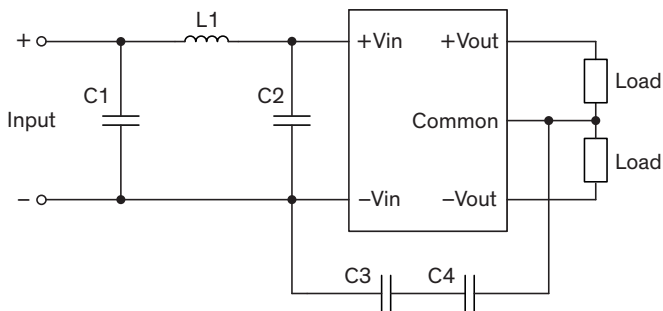
Single output models



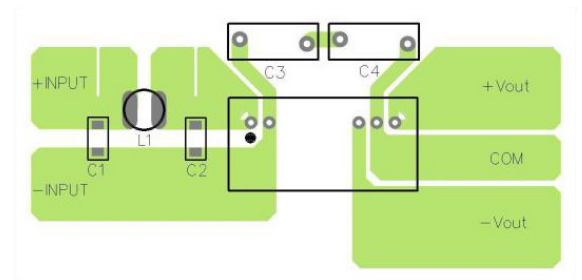
PCB layout suggestion



Dual output models



PCB layout suggestion



Suggested components to comply with EN 55032 Conducted and Radiated Emissions Class B limits

Model	C1, C2	C3, C4	L1
TRV 2-05xxM	22 μF / 25 V / 1206 MLCC	100 pF / Y1 TDK CD45 series	10 μH / TCK-172
TRV 2-12xxM TRV 2-15xxM TRV 2-24xxM	10 μF / 50 V / 1206 MLCC		22 μH / TCK-188

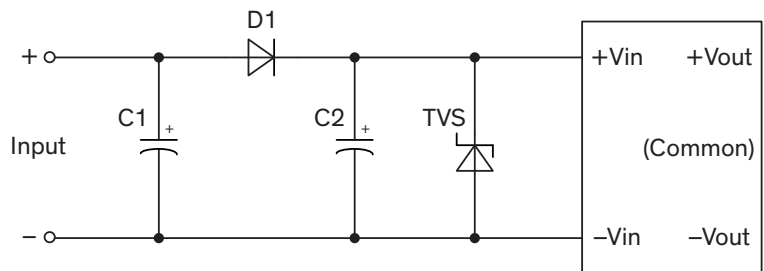
TCK-172 datasheet: www.tracopower.com/overview/tck-172

TCK-188 datasheet: www.tracopower.com/overview/tck-188

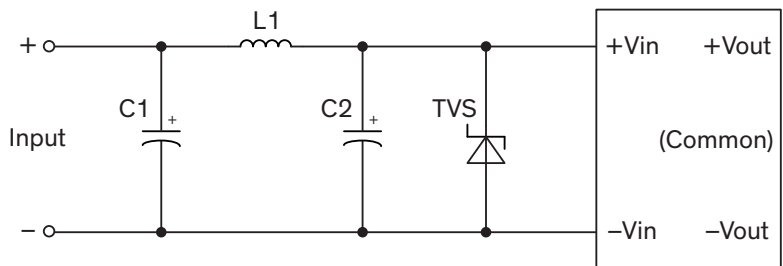
EMS Consideration

Suggested filter to comply with EN 55032 EFT (Burst) & Surge, perf. criteria A

TRV2-05xxM



TRV2-12xxM / TRV 2-15xxM / TRV 2-24xxM



Suggested components to comply with EN 55032 EFT (Burst) & Surge, perf. criteria A					
Model	C1	C2	D1	L1	TVS
TRV 2-05xxM	680 μF / 50 V / KY	2'200 μF / 50 V KMG	65 V / 3 A NA03ASA065	-	15 V / 3'000 W SMDJ15A
TRV 2-12xxM TRV 2-15xxM TRV 2-24xxM	2'200 μF / 50 V KMG		-	22 μH / TCK-188	36 V / 3'000 W SMDJ36A

TCK-188 datasheet: www.tracopower.com/overview/tck-188